

PAVEMENT

ADJUSTABLE 12 INCH GATE BOX AND LID. SEE WDS-117. SEE NOTE 1.

12 INCH POLYVINYL CHLORIDE PIPE

2 INCH BRASS ANGLE VALVE

SPOT BRAZE

6 INCHES OF CRUSHED ROCK TO SEAL OUT DIRT

2 INCH BRASS STREET ELL

10 1/2 INCHES

2 7/8 INCHES

2 3/8 INCHES

2 INCHES

3 1/4 INCHES

3 INCHES

12 INCHES

14 INCHES

2 INCH BRASS PLUG

2 INCH BRASS COUPLING

2 x 4 INCH BRASS NIPPLE

2 INCH BRASS STREET ELL

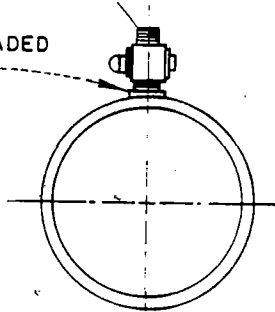
2 INCH BRASS RISER AS REQUIRED

2 INCH x 90° BRASS ELL

CONTINUED BELOW

2 INCH BALL VALVE

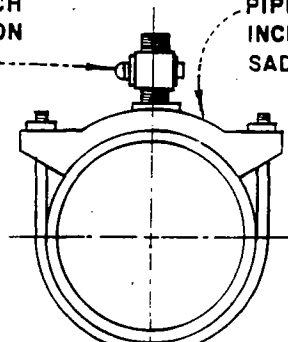
2 INCH THREADED OUTLET



STEEL PIPE

1 1/2 x 2 INCH CORPORATION STOP

PIPE SIZE x 1 1/2 INCH SERVICE SADDLE



DIP

NOTE:

AFTER THE MAIN HAS BEEN STERILIZED, IF INSTRUCTED BY THE WATER DEPARTMENT, AND APPROVED BY THE HEALTH DEPARTMENT, REMOVE THE GATE BOX AND PLACE THE LID OVER THE POLYVINYL CHLORIDE PIPE AND CONSTRUCT PERMANENT RESURFACING.

LONG BEACH WATER DEPARTMENT

CHLORINATION AND AIR RELIEF ASSEMBLY

DESIGNED BY HILLER

CHECKED BY MANABAT

DATE 4-3-87

SCALE NONE

SUPERSEDES DWG. NO.

A5-690

DRAWN BY STANLEY

RECOMMENDED

BUREAU ENGINEER C.E. NO. 19113

APPROVED

GENERAL MANAGER C.E. NO. 18644

SHEET

1 OF 1

WDS-110