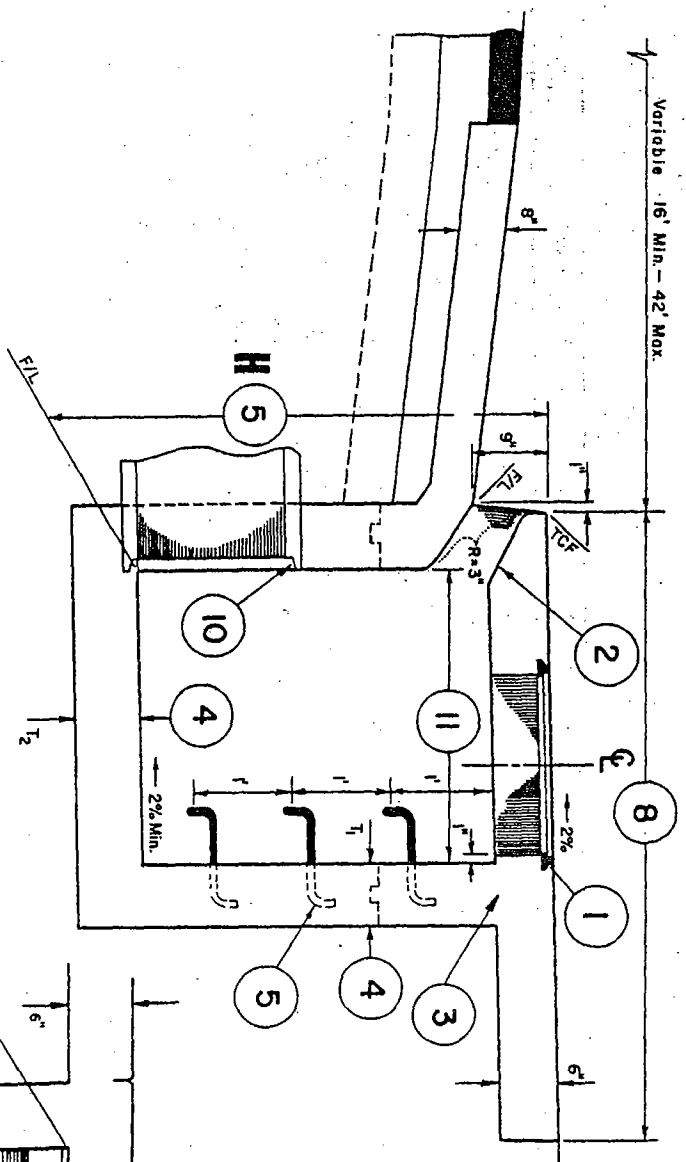
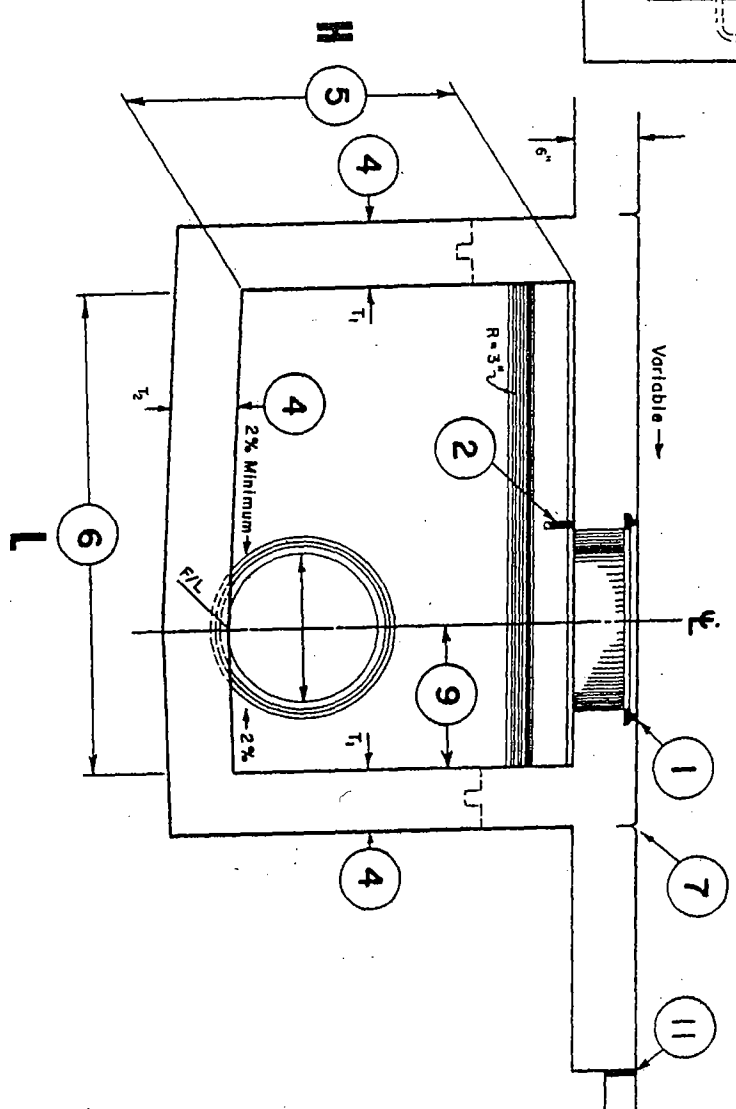


Variable 16' Min. - 42' Max.



Section A-A



Section B-B

COUNTY OF SANTA BARBARA, CA. - DEPARTMENT OF PUBLIC WORKS - ROADS DIV.

Approved by

2-025

TYPE A DROP INLET

*Charles J. Wagner*  
DIRECTOR OF PUBLIC WORKS

4/1/87  
DATE

NOTES

1. MANHOLE FRAME AND COVER PER STANDARD DETAIL 2-100. MAY BE ALHAMBRA FOUNDRY COMPANY A-1530 OR APPROVED EQUAL.
2. A CURB SUPPORT PLATE SHALL BE PROVIDED PER STANDARD DETAILS 2-030 AND 2-035.
3. THE WALLS AND BOTTOM SHALL BE CLASS A CONCRETE.
4. ALL WALL AND SLAB THICKNESS ARE PER TABLE A. STANDARD DETAIL 2-020.
5. WHEN THE HEIGHT IS GREATER THAN 3'-6" STEPS SHALL BE PROVIDED PER STANDARD DETAIL 2-115.
6. THE MINIMUM LENGTH SHALL BE 3' AND THE MAXIMUM LENGTH SHALL BE 21'.
7. 1-1/2" DEEP CONTRACTION JOINTS SHALL BE PROVIDED AS SHOWN.
8. THE WIDTH OF THE TOP SLAB IS VARIABLE TO MATCH ADJACENT SIDEWALKS. SEE STANDARD DETAIL 4-040.
9. THE DISTANCE FROM THE WALL TO THE CENTERLINE OF THE PIPE SHALL BE THE INTERIOR DIAMETER OF THE PIPE.
10. A 3" ROUNDING SHALL BE PROVIDED IF THE BELL END OF ACP OR RCP IS NOT USED.
11. THE SPAN SHALL BE 3 FOOT MINIMUM.
12. 1/2" MAXIMUM EXPANSION JOINT MATERIAL SHALL BE PROVIDED AS SHOWN.
13. SEE STANDARD DETAILS 2-040 AND 2-045 FOR GUTTER ELEVATIONS.

COUNTY OF SANTA BARBARA, CA. - DEPARTMENT OF PUBLIC WORKS - ROADS DIV.

Approved by

2-025

TYPE A DROP INLET

*Charles Wagner*  
DIRECTOR OF PUBLIC WORKS

DATE

*4/1/87*