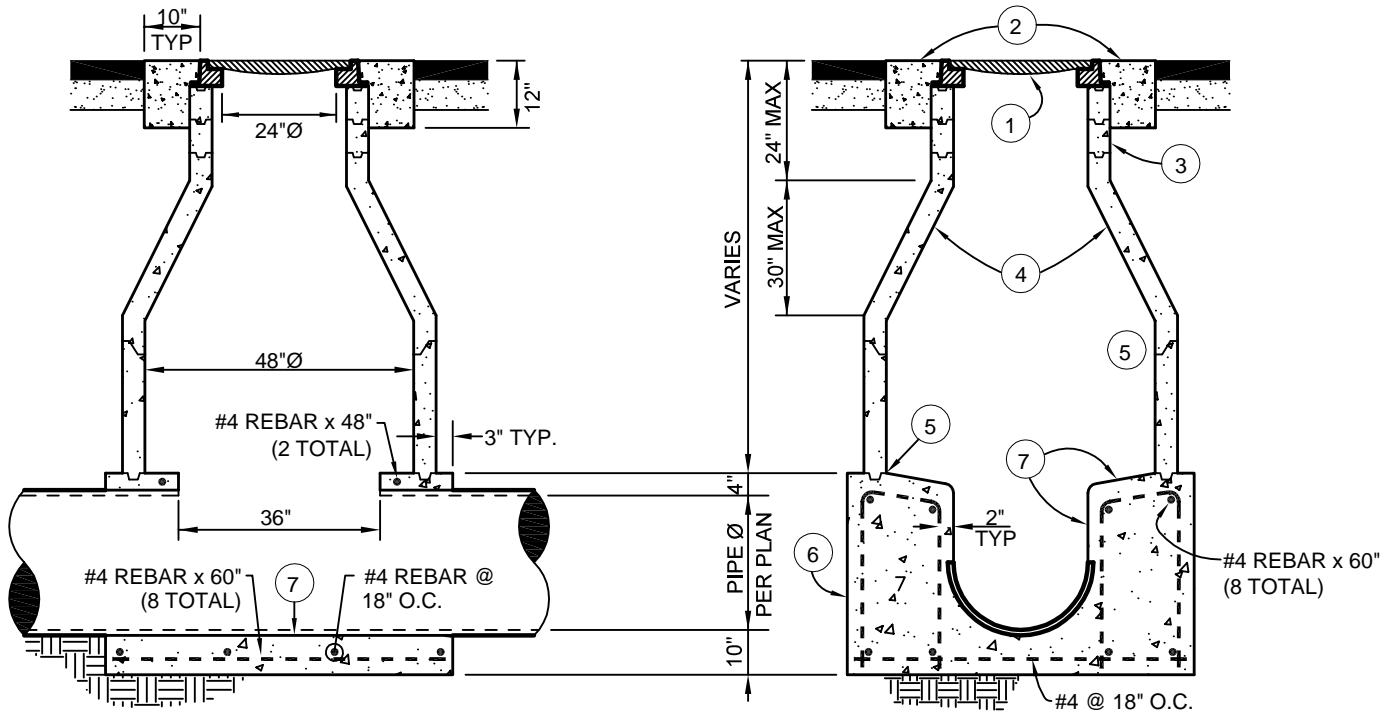


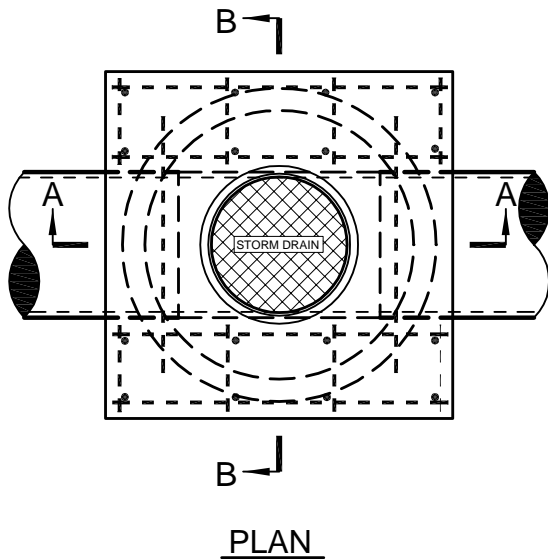
Revisions

Description	Approved	Date	Description	Approved	Date



SECTION A-A

SECTION B-B



PLAN

NOTES:

1. MANHOLE COVER AND FRAME SHALL HAVE A MINIMUM 24"Ø OPENING AND CONFORM TO HS-20 TRAFFIC LOADING. LID SHALL HAVE AN OPEN PICKHOLE, AND BE LETTERED "STORM DRAIN".
2. COLLAR SHALL BE CLASS A PORTLAND CEMENT CONCRETE, TROWELLED TO STREET GRADE, AND ALLOWED TO CURE 48 HOURS PRIOR TO FULL TRAFFIC USE.
3. PROVIDE ADJUSTING RINGS AS NEEDED, GROUDED ON THE INSIDE.
4. PRECAST SHAFT(S) AND CONCENTRIC CONE SHALL MEET ASTM C-478 61T FOR CLASS 2 REINFORCED CONCRETE PIPE, OR AS APPROVED BY THE DEPARTMENT.
5. JOINTS SHALL BE WATERTIGHT, SET WITH BUTYL RUBBER SEALANT (RUB'R-NEK OR EQUAL).
6. MANHOLE BASE SHALL BE CLASS A PORTLAND CEMENT CONCRETE, AND REST ON UNDISTURBED MATERIAL. BOTTOM SHAFT SHALL BE WET-SET OR SET IN FORMED GROVE. PRECAST BASES MAY BE USED WITH PRIOR APPROVAL OF THE DEPARTMENT AND SHALL MEET ASTM C-478 61T.
7. PIPE SHALL BE LAID THROUGH MANHOLE, AND TOP PORTION REMOVED AFTER BASE IS POURED. TROUGH SHALL HAVE STEEL-TROWEL FINISH, VERTICAL SIDES, ROUNDED CORNERS. TOP SURFACE SHALL HAVE 1-INCH PER 12-INCH SLOPE TOWARD TROUGH.
8. EQUIVALENT PRECAST BASE SHALL BE ALLOWED.
9. UNDER NO CIRCUMSTANCES SHALL UTILITY LIDS AND CONCRETE COLLARS BE LOCATED WITHIN CURBS, GUTTERS, SIDEWALKS, DRIVEWAY APRONS, CURB RAMPS, OR CROSS GUTTERS.



SAN LUIS OBISPO COUNTY DEPARTMENT OF PUBLIC WORKS
STORM DRAIN MANHOLE
FOR PIPE DIAMETERS FROM 18" TO 36"

Scale:	Issued:
NTS	Aug. 2006
Drawing No:	D-3
Sheet No:	1 OF 1