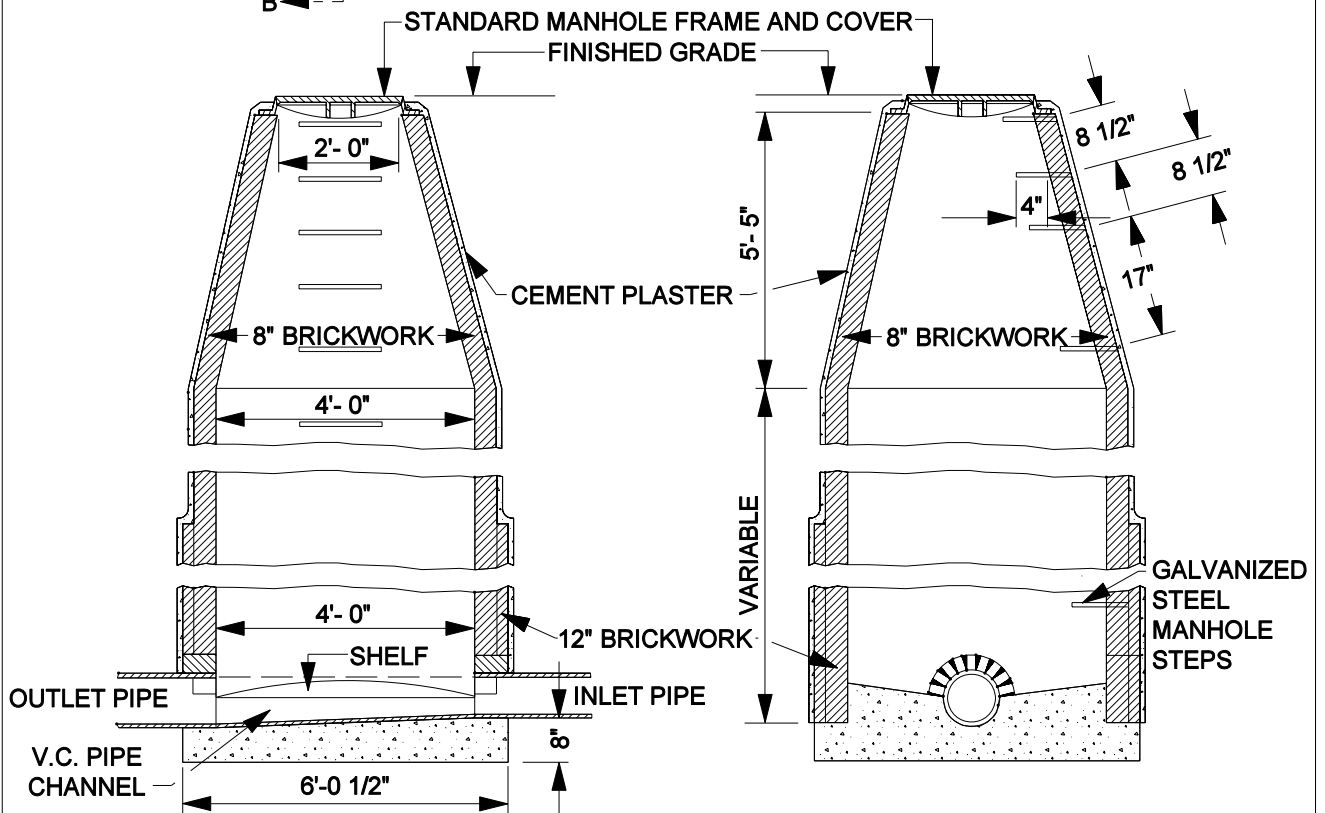


NOTES:

1. AT INLETS AND OUTLETS TURN BRICK ARCH OVER PIPE.
2. THE LOWEST STEP SHALL BE NOT MORE THAN 24" ABOVE THE SHELF.
3. FOR PIPE 15" OR LESS THE CHANNEL SHALL BE 2/3 OF THE PIPE DIAMETER AND FULL PIPE DIAMETER FOR PIPE 18" OR MORE.
4. CONCRETE TO BE CLASS "A".



NOT TO SCALE

APPROVED BY:

DATE: 11/15/04

DIRECTOR OF TRANSPORTATION
GEORGE A. JOHNSON, RCE 42328

COUNTY OF RIVERSIDE

**DEEP SEWER
MANHOLE**

REVISIONS		REV.	BY:	APR'D	DATE	REV.	BY:	APR'D	DATE
8-71, 3-82		1				4			
11-04		2				5			
		3				6			

STANDARD NO. 605