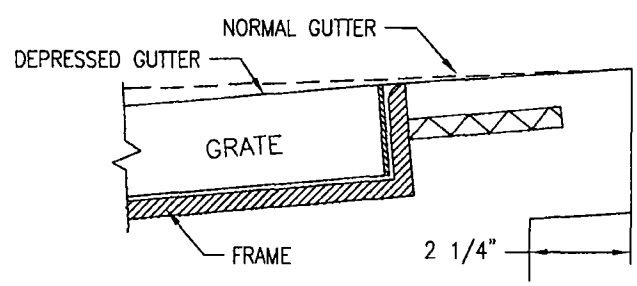
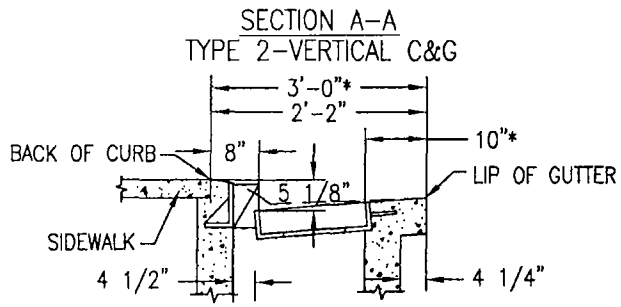
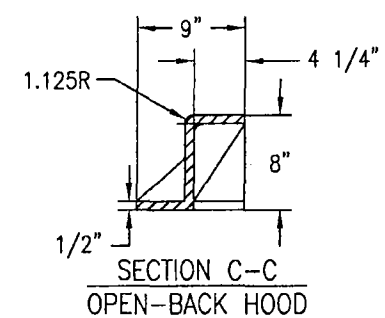


CONNECTOR PIPE OR MONOLITHIC CATCH BASIN CONNECTION. ALL PIPE CONNECTIONS SHALL CONFORM TO ASTM C-923. PRECAST UNITS SHALL BE BOOT TYPE OR INTEGRAL COMPRESSION GASKET. CAST IN PLACE UNITS SHALL INCLUDE A WATER STOP IF THE MONOLITHIC CATCH BASIN CONNECTION IS NOT REQUIRED.



David DeWane
 DIRECTOR, DEPARTMENT OF WATER RESOURCES

- NOTES**
1. STANDARD DEPRESSION FOR INLET IS 1-1/2".
 2. FRAME AND GRATE SHALL CONFORM TO DRAWINGS 9-14 AND 9-15.
 3. OPEN-BACK HOOD SHALL BE H-20 RATED.
 4. ALL EXPOSED EDGES SHALL HAVE A 1/8" R (MINIMUM).
 5. AN EDGING TOOL SHALL BE USED ON ALL EDGES WHERE THE CONCRETE SIDEWALK AND CURB MEET THE TOP OF THE HOOD.
 6. EXPOSED SURFACES OF THE GRATES, FRAMES AND HOODS WITH THE PARTS ASSEMBLED AND DISASSEMBLED SHALL BE PAINTED WITH COMMERCIAL QUALITY ASPHALTUM PAINT AFTER TESTING AND ASSEMBLY.
 7. CAST IRON HOODS SHALL BE 3/4" THICK.

**SACRAMENTO COUNTY
 MUNICIPAL SERVICES AGENCY**

**DROP INLET
 TYPE B**

DRAWN BY: STAFF
 SCALE: NONE
 DATE: 06/07

9-13B