

△ FACE PLATE END & SPLICE DETAILS
△

SUPERSEDES DRAWING OF SAME NUMBER DATED 4-1-65

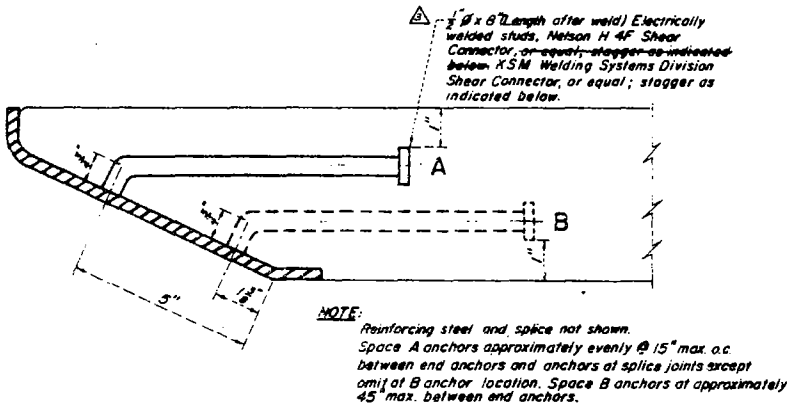
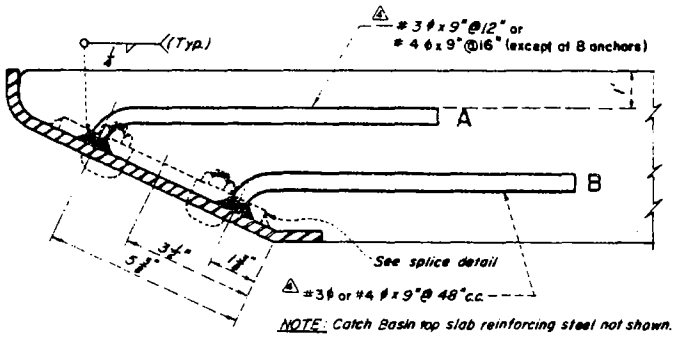
LOS ANGELES COUNTY
FLOOD CONTROL DISTRICT

DETAIL OF CATCH BASIN
OPENING

DESIGNED BY: *G.F. Chubb*
APPROVED BY: *Walter J. Wood*
SCALE: NONE DATE: 3-15-68 DWG. NO. 2-0232 SHEET 1 OF 1

DRAWN BY		REVISIONS		
MARK	DATE	DESCRIPTION		
△	5-25-68	Revised Detail		
△	2-25-69	Revised Detail		
△	11-16-73	Revised Detail		
△	2-1-74	#4 bar alternatives		

NOTES



ALTERNATE METHODS FOR FACE PLATE ANCHORAGE

1. Support bolt angle "α" shall vary to conform with batter of adjoining curb.
2. Protection bar shall be installed, and support bolts spaced, according to Standard Drawing 2-D175.
3. Support bolts shall be equal in length to Curb Face + 4" ± for all curb batters.
4. All exposed metal parts shall be galvanized after fabrication.
5. Protection Bar Spacing: Protection bar(s) shall be installed when the minimum clear opening of the catch basin exceeds 6". Bar(s) shall be placed such that no minimum clear opening exceeds 6".
 - (A) When one bar is required, "s" shall be 6"; however, this shall be reduced, if necessary, so that the center of the protection bar is not less than 2 1/2" from the rolled plate.
 - (B) When two or more bars are required "s" shall be 6" with remaining bars spaced @ 6" c.c. The spacing of the top bar shall be reduced, if necessary, so that the center of the bar is not less than 2 1/2" from the rolled plate.
6. Where catch basins are to be constructed on curves, the maximum chord length for face plate shall be such that the maximum dimension from said chord (measured perpendicular thereto) to the true curve will not exceed one inch. Where more than one chord is required, chord lengths shall be equal.
7. When length of Face Plate is between 22' and 43', two sections may be used. When length exceeds 43', three sections may be used. Sections shall be spliced according to the Splice Detail. Splices shall be placed one foot from support bolt (see Std. Dwg. No. 2-D175).
8. Length of Face Plate is W+12" for all catch basins except the driveway Catch Basin No. 8 (See Dwg. No. 2-D249.) and 2 for details).
9. Curb Face shall be as required by Dwg. Nos. 2-D88, 2-D248, 2-D415, or as shown on the general plan.
10. **SPACING OF ALL ANCHORAGE:**
 - a. Set end anchors 3" from ends of face plate.
 - b. Place one A anchor at each side of any and all splice joints and within 6" thereof.