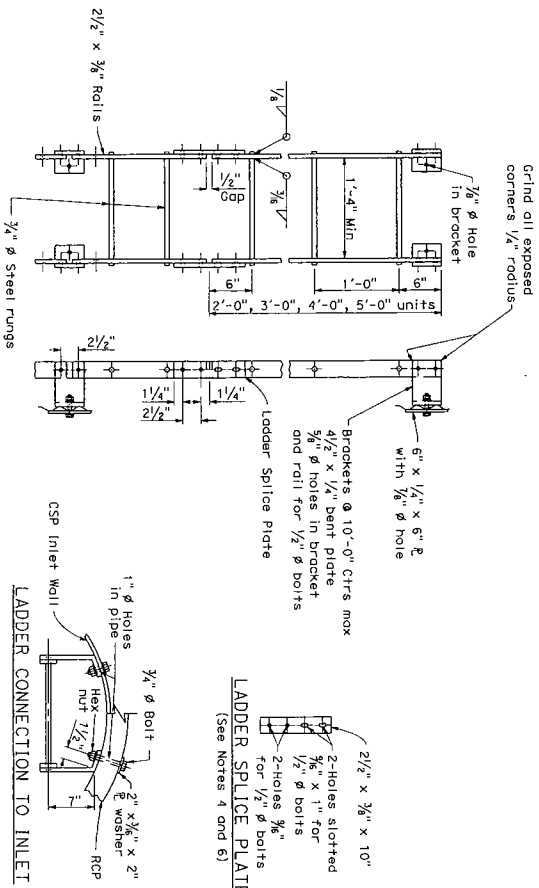


0151	COUNTY	ROUTE	POST MILES	SHEET TOTAL
			TOTAL PROJECT	NO. SHEETS

Registered Professional Engineer  
 CIVIL ENGINEER  
 License No. 45254  
 State of California  
 Exp. 03/31/11  
 The State of California or its officers or agents shall not be responsible for the accuracy or completeness of information furnished by third parties.  
 To get the full version visit: <http://www.dgs.ca.gov>

**NOTES:**

- Ladders and Steps - None required where "H" dimension of pipe inlet is less than 2'-6" where "H" is 2'-6" or more. Install steps or ladder with lowest rung not more than 1'-0" above the floor and highest rung not more than 1'-0" below top of inlet. The distance between steps or rungs shall not exceed 1'-0". Place steps or ladder in the wall without an opening.
- Ladder may be constructed in one length or contractor's option on RCP Inlet.
- On CSP Inlet, connect ladder splice plate so joint can compress 1/2".
- Ladder splice plate to be connected with 1/2"  $\phi$  bolts with double nuts.
- Trash racks used on Type OCP1 and OWP1 inlets. Trash racks required for pumping installations.
- All hardware to be galvanized after fabrication. See Standard Specifications or Special Provisions.



**LADDER DETAILS**  
(See Notes 1, 2, 3, 4 and 6)

**LADDER CONNECTION TO INLET**

**TRASH RACK DETAILS**  
(See Notes 5 and 6)

STATE OF CALIFORNIA  
 DEPARTMENT OF TRANSPORTATION  
**PIPE INLETS  
 LADDER AND TRASH  
 RACK DETAILS**  
 NO SCALE

**D75C**