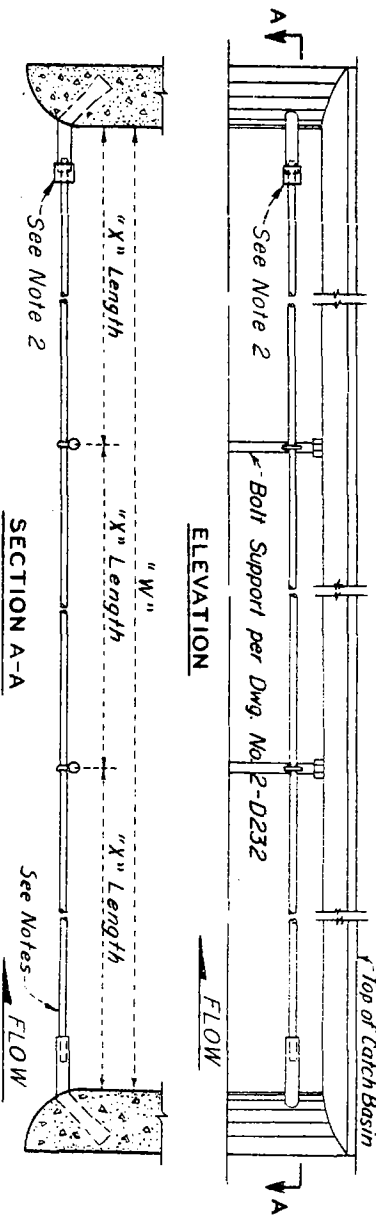
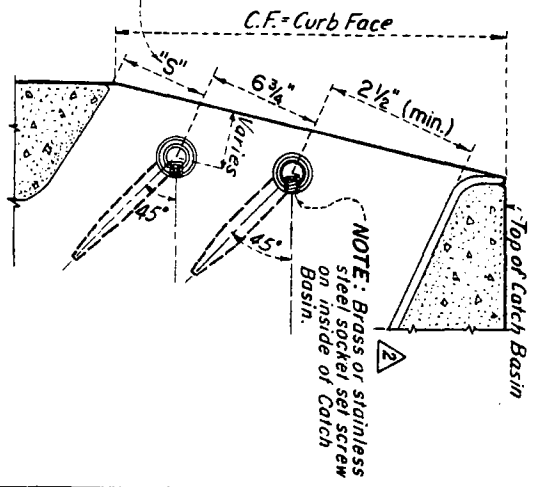


DETAIL OF ANCHOR



ELEVATION

SECTION A-A



SECTION SHOWING LOCATION OF ANCHOR AT WALL OF CATCH BASIN

"W" (incl.)	NUMBER OF SUPPORT BOLTS	NUMBER OF "X" LENGTHS
5' to 10'	1	2
10' to 15'	2	3
15' to 20'	3	4
20' to 25'	4	5
25' to 30'	5	6

SUPERSEDES DRAWING OF THE SAME NUMBER DATED OCT. 1952.

- NOTES:
- All bars shall be $\frac{3}{4}$ " Galv. hot-rolled steel per A.S.T.M. Designation A-36. Bar lengths shall not exceed 21', and shall be cut to fit in field. When "W" is over 21', protection bar shall consist of two or more sections depending upon length of basin. Location of special support bars and additional brass-socket set screw shall be determined by the Engineer in the field.
 - Install coupling at downstream end of catch basin opening.

Supersedes Drawing of same number dated Aug 5, '68 (Rev. 10-4-68) ~~Superseded by drawing of the same number dated Aug 5, '68.~~

REFERENCES	REVISIONS	APPROVED BY
2-D232	2-21-69 11-16-74 Revised Note Brass or stainless steel set screw	APPROVED BY DATE 5-15-68 NO. 2-D175 SHEET 1 OF 1

LOS ANGELES COUNTY
FLOOD CONTROL DISTRICT
REMOVABLE
PROTECTION BAR
FOR CATCH BASINS

SUBMITTED BY C.W.H.
RECOMMENDED BY
DIVISION ENGINEER (DESIGN)