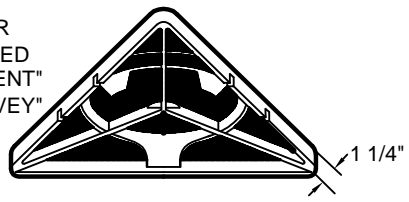


Revisions

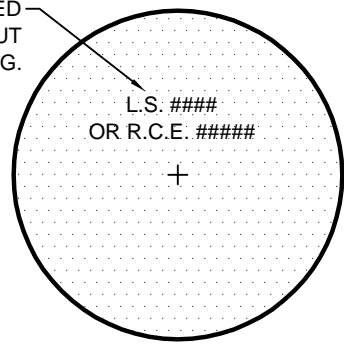
Description	Approved	Date	Description	Approved	Date

COVER
LETTERED
"MONUMENT"
OR "SURVEY"

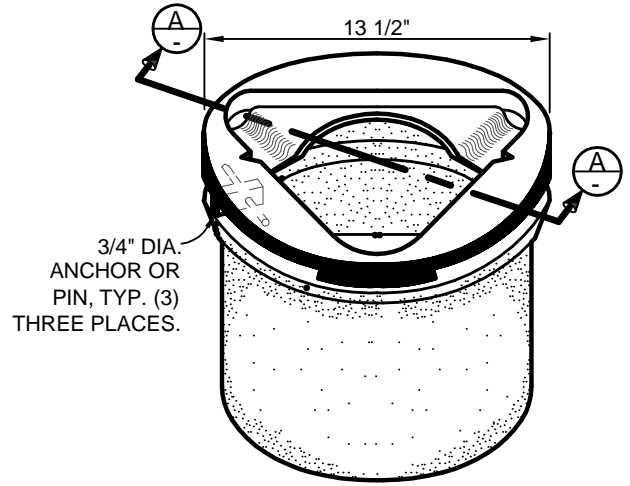


COVER (BOTTOM)

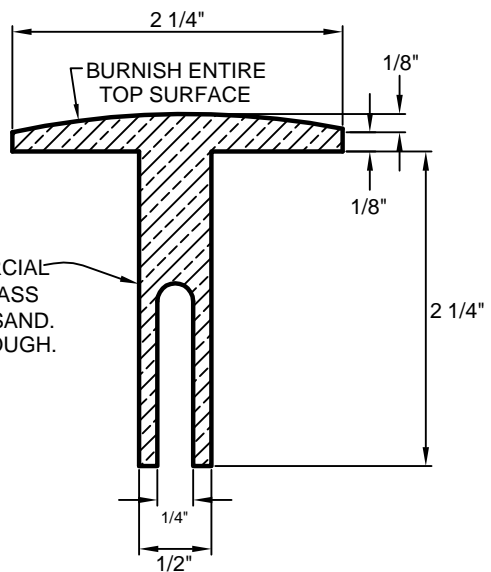
LETTERS DEPRESSED
1/32" DEEP "U" CUT
AFTER BURNISHING.



CAP PLAN



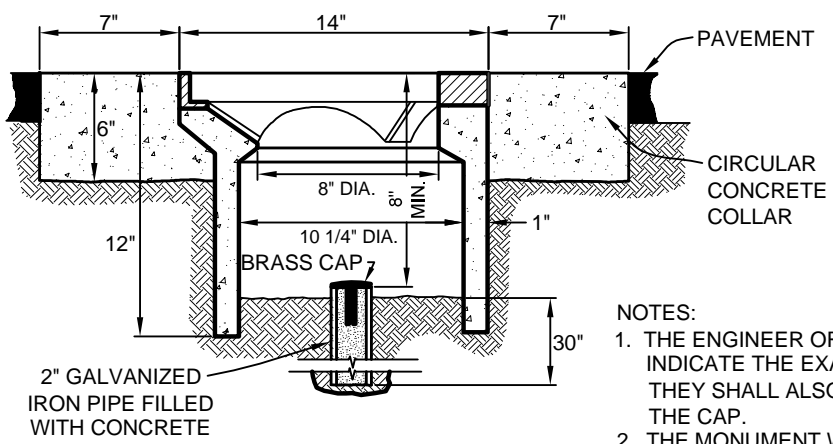
ISOMETRIC



CAP SECTION



RISER RING



SECTION A-A

NOTES:

1. THE ENGINEER OR SURVEYOR SETTING THE MONUMENT SHALL INDICATE THE EXACT POINT BY MARKING A CROSS ON THE CAP. THEY SHALL ALSO STAMP THEIR LICENSE TYPE AND NUMBER ON THE CAP.
2. THE MONUMENT WELL SHALL BE BROOKS PRODUCTS No. 4TT, OR DEPARTMENT APPROVED EQUAL.
3. BRASS CAPS ARE AVAILABLE FOR PURCHASE FROM THE COUNTY PUBLIC WORKS DEPARTMENT.



SAN LUIS OBISPO COUNTY DEPARTMENT OF PUBLIC WORKS
STANDARD STREET MONUMENT
FOR PAVED ROADS

Scale: NTS	Issued: Aug. 2006
Drawing No:	M-1
Sheet No:	1 OF 1