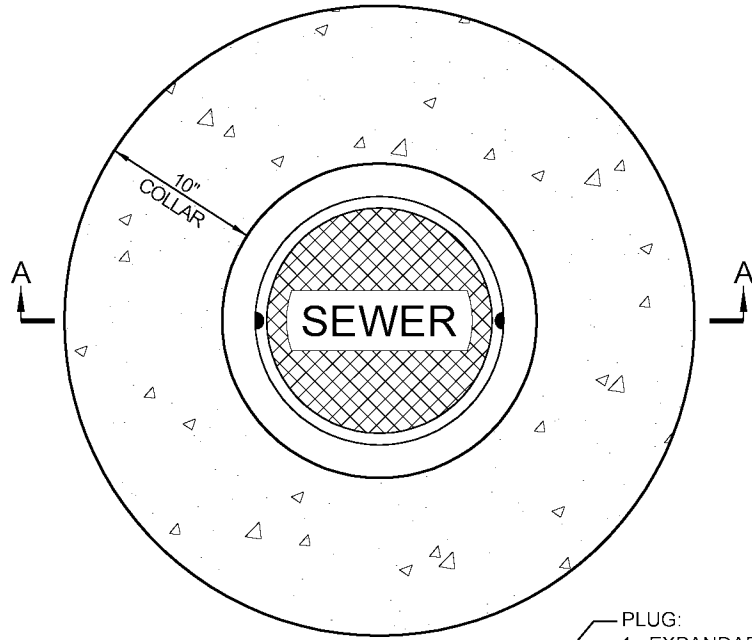


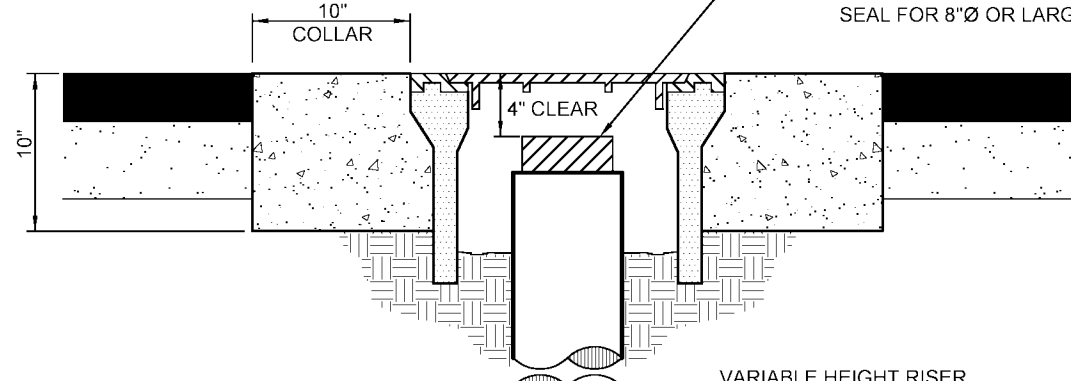
Revisions

Description	Approved	Date	Description	Approved	Date



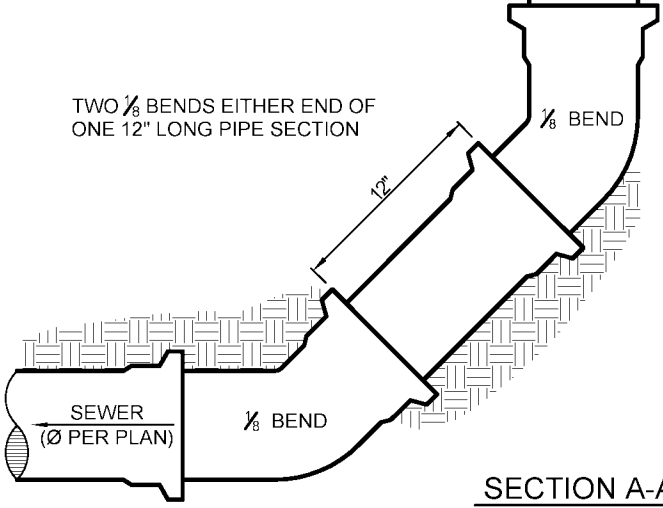
PLAN

- PLUG:
1. EXPANDABLE O-RING PLUG FOR 6"Ø PIPE BELL WITH CAP, OR
  2. PLAIN END WITH COOKIE AND BAND SEAL FOR 8"Ø OR LARGER PIPES



VARIABLE HEIGHT RISER

TWO 1/8 BENDS EITHER END OF ONE 12" LONG PIPE SECTION



SECTION A-A

- NOTES:
1. NO LATERALS ARE TO BE CONNECTED TO CLEANOUTS.
  2. VALVE BOX SHALL BE CHRISTY G-12 TRAFFIC VALVE BOX WITH G-12C LID (OR APPROVED EQUAL). COVER SHALL BE MARKED "SEWER".
  3. CIRCULAR COLLAR SHALL BE PORTLAND CEMENT CONCRETE, TROWELLED TO STREET GRADE, AND ALLOWED TO CURE 48 HOURS PRIOR TO FULL TRAFFIC USE.
  4. UNDER NO CIRCUMSTANCES SHALL UTILITY LIDS AND CONCRETE COLLARS BE LOCATED WITHIN CURBS, GUTTERS, SIDEWALKS, DRIVEWAY APRONS, CURB RAMPS, OR CROSS GUTTERS.



SAN LUIS OBISPO COUNTY DEPARTMENT OF PUBLIC WORKS

SEWER MAIN CLEANOUT

Scale:	Issued:
NTS	Aug. 2006
Drawing No:	S-2
Sheet No:	1 OF 1