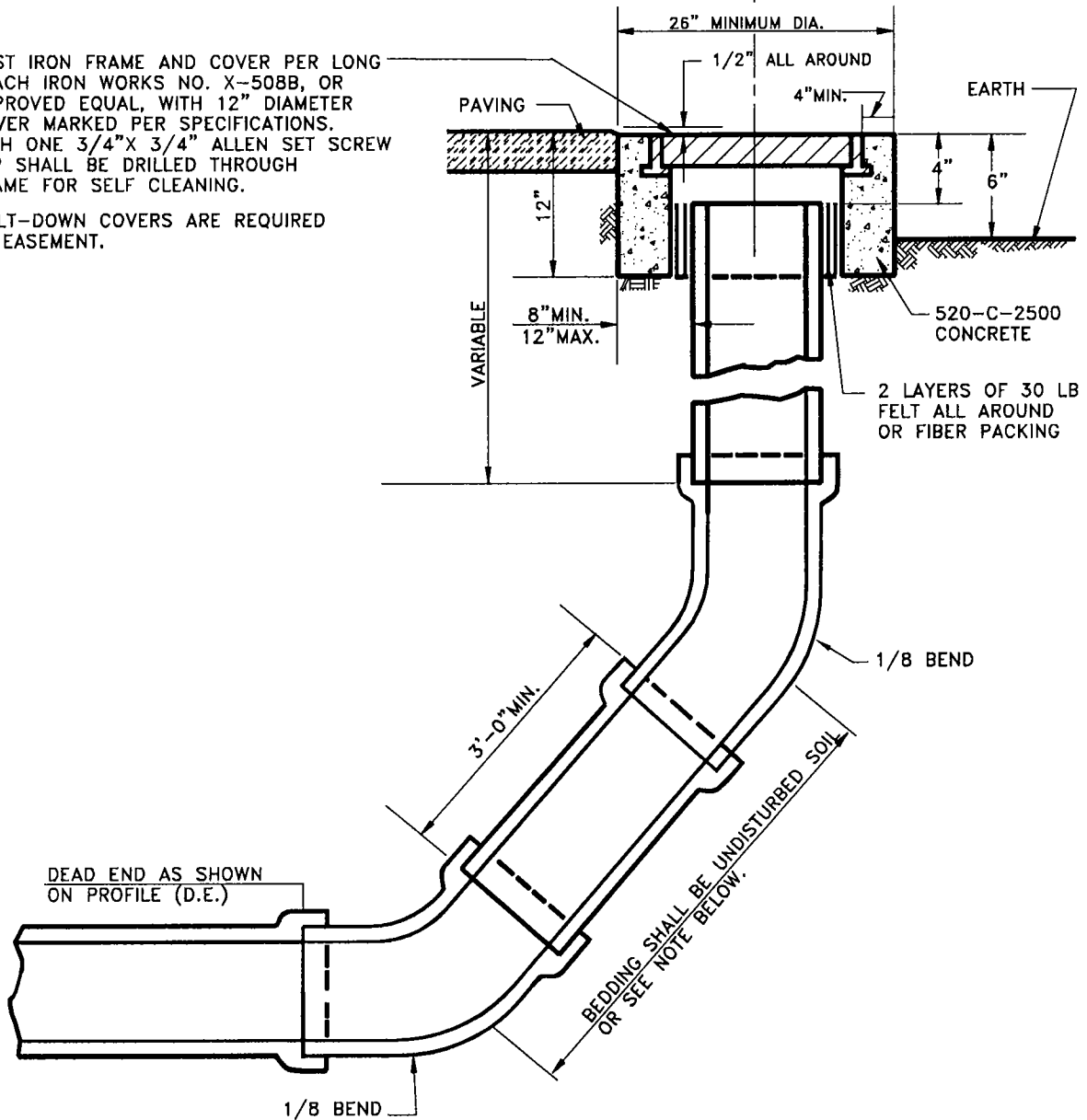


**DETAIL FOR CLEANOUTS  
IN PAVED SURFACES**

**DETAIL FOR CLEANOUTS  
IN EASEMENTS**

CAST IRON FRAME AND COVER PER LONG BEACH IRON WORKS NO. X-508B, OR APPROVED EQUAL, WITH 12" DIAMETER COVER MARKED PER SPECIFICATIONS. WITH ONE 3/4" X 3/4" ALLEN SET SCREW TAP SHALL BE DRILLED THROUGH FRAME FOR SELF CLEANING.

BOLT-DOWN COVERS ARE REQUIRED IN EASEMENT.



**NOTE:**

CLEAN-OUT LINE TO BE OF THE SAME MATERIAL & SIZE AS SEWER MAIN. THE SEWER MAIN SHALL BE LAID FOR THE FULL LENGTH & DEPTH SHOWN ON THE PLAN & PROFILE TO THE STATION MARKED DEAD END (D.E.). THE TRENCH FOR A DEAD END SHALL BE EXCAVATED ONLY TO SUBGRADE WHICH IS THE BOTTOM OF THE SLOPING PIPE AND FITTINGS. SHOULD THE EXCAVATION FOR ANY REASON BE CARRIED BELOW SUBGRADE, IT SHALL BE REFILLED TO SUBGRADE WITH ROCK OR GRAVEL WHICH SHALL BE TAMPED UNTIL FIRM AND UNYIELDING. SHOULD A FIRM AND UNYIELDING FOUNDATION BE UNOBTAINABLE BY THIS METHOD A CONCRETE PIPE CRADLE SHALL BE USED.

AUGUST 2005

CITY OF CHIND HILLS			<b>CLEANOUT</b>	<b>S-8</b>
Revised: / /	by:	Approved by:		
Revised: / /	by:			
Revised: / /	by:	CITY ENGINEER		