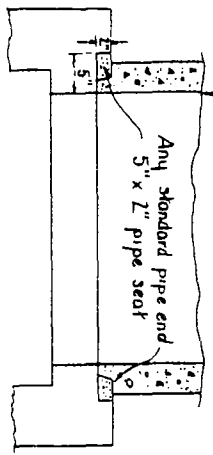


VERTICAL SECTION OF REINFORCED CONCRETE ECCENTRIC MANHOLE SHAFT

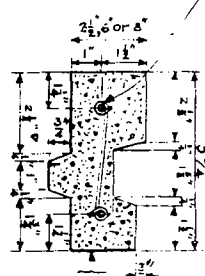


NOTES "CONTINUED"

8 The surfaces of cones and shafts shall be smooth and neatly finished. Cones or shafts with imperfect molding or honeycomb surfaces will not be accepted.

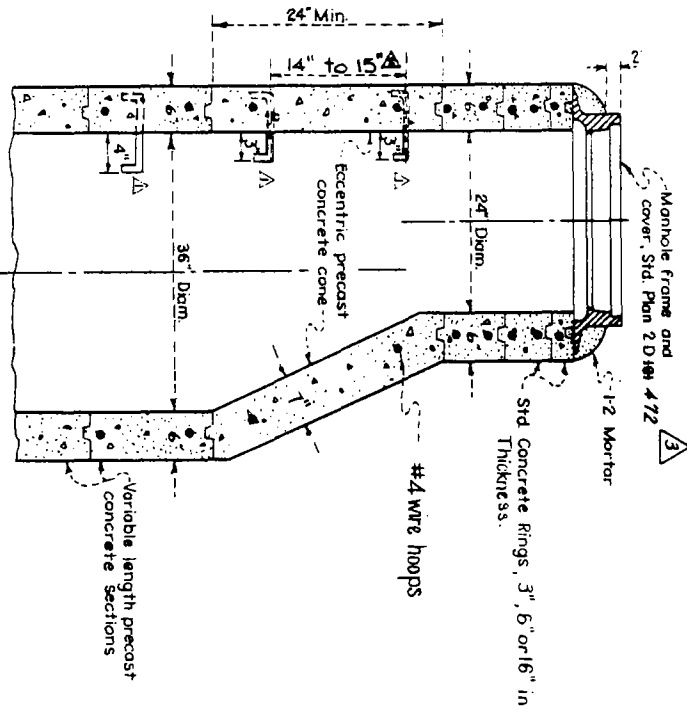
- NOTES
- 1- ALL JOINTS shall be filled with 1-2 mortar and neatly pointed or wiped on inside of shaft.
 - 2- COLLAR of 1-2 mortar around cover frame shall be omitted in rock and oil streets and in paved streets.
 - 3- STEPS shall be 3/4 inch round galvanized steel. Top step shall be placed directly beneath the manhole cover frame.
 - 4- Width of all steps shall be 14 inches between leg centers. Except where shown otherwise, spacing of steps in shaft shall be 14 to 15 inches on center. See STD Dwg 2-D 96.
 - 5- ECCENTRIC MANHOLE shaft, reducer, and rings may be plain concrete.
 - 6- For unreinforced sections, the minimum thickness shall be 6 inches. The concrete used shall be of such strength so as to develop 3500 p.s.i. or greater in 28 days.

CROSS SECTION OF REINFORCED CONCRETE RING



1/2 inch rings shall be reinforced with two round steel hoops; 6 inch and 8 inch rings shall be reinforced with four hoops, tied with No. 14 A.S. & W. gauge wire 8 inches on centers.

VERTICAL SECTION OF PLAIN CONCRETE ECCENTRIC MANHOLE SHAFT



REFERENCES	REVISIONS	LOS ANGELES COUNTY FLOOD CONTROL DISTRICT									
2-D 101 2-D 96 2-D 472	<table border="1"> <tr> <th>DATE</th> <th>DESCRIPTION</th> </tr> <tr> <td>2-16-48</td> <td>Added Note</td> </tr> <tr> <td>11-9-70</td> <td>Added note and projection of steps</td> </tr> <tr> <td>3-1-74</td> <td>M.H.F.C. ref. Note 7</td> </tr> </table>	DATE	DESCRIPTION	2-16-48	Added Note	11-9-70	Added note and projection of steps	3-1-74	M.H.F.C. ref. Note 7	<p>CONCRETE RINGS, REDUCER AND PIPE FOR MANHOLE SHAFT</p> <p>APPROVED BY: <i>[Signature]</i> DATE: 1-6-'39 NO. 240107</p>	
DATE	DESCRIPTION										
2-16-48	Added Note										
11-9-70	Added note and projection of steps										
3-1-74	M.H.F.C. ref. Note 7										