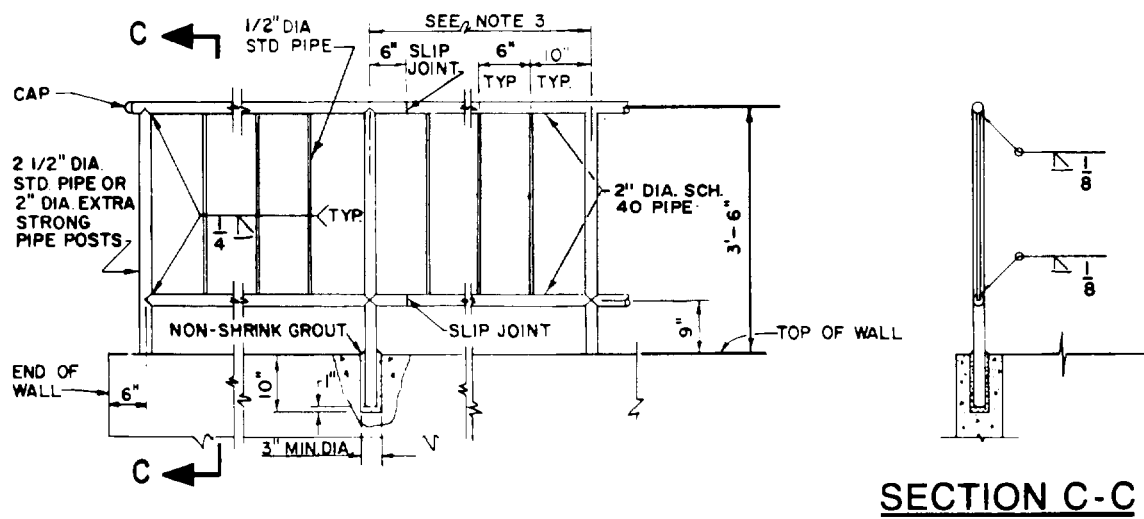
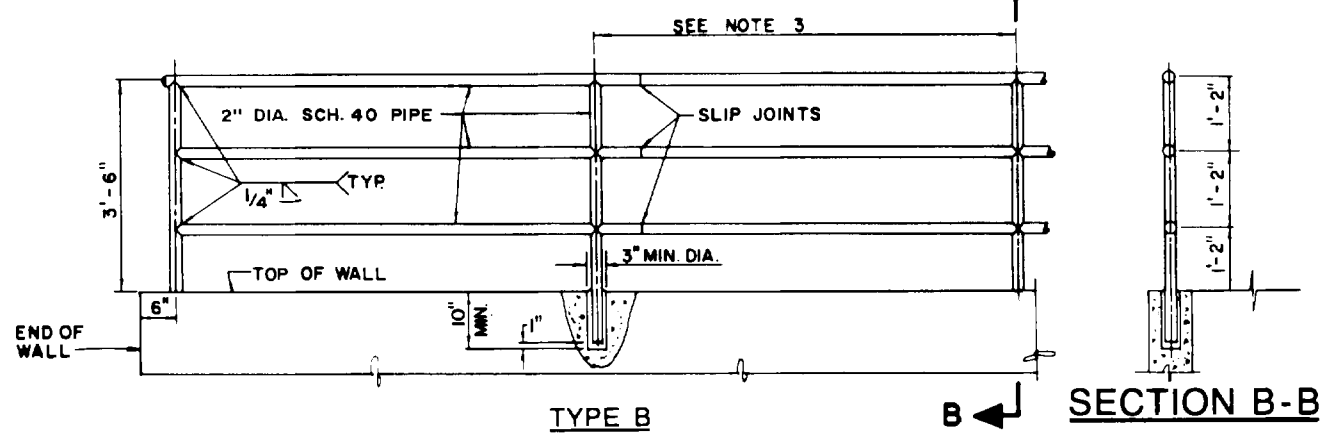
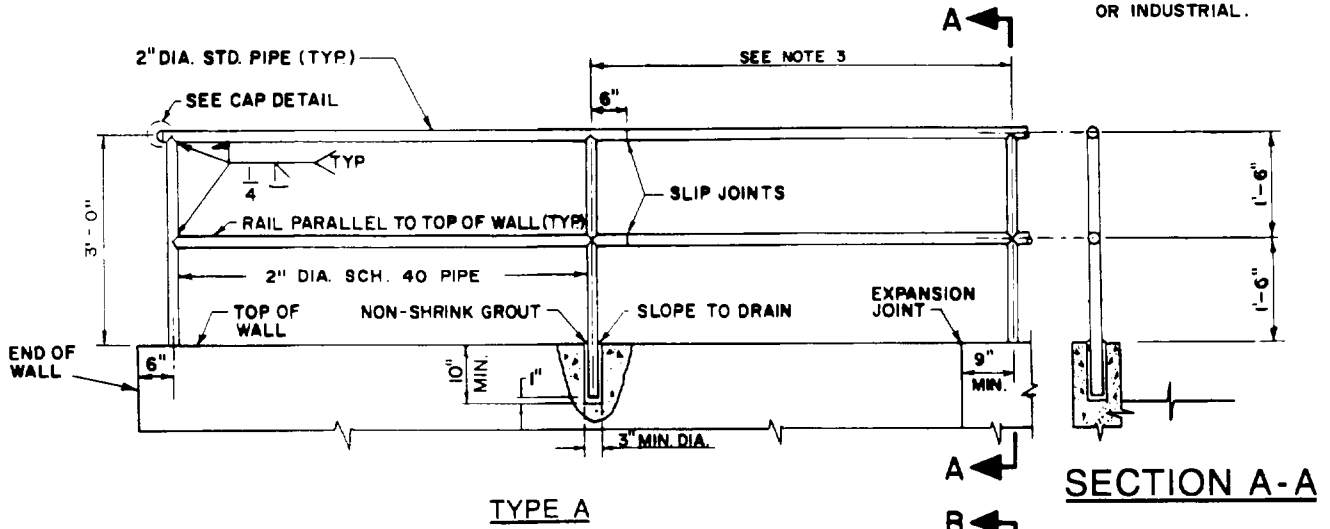


NOTE:
 WHEN USED AS A GUARDRAIL
 THIS IS FOR NON-PUBLIC
 AREAS I.E. COMMERCIAL
 OR INDUSTRIAL.



ELEVATION
TYPE C

CITY OF RANCHO CUCAMONGA, CALIFORNIA

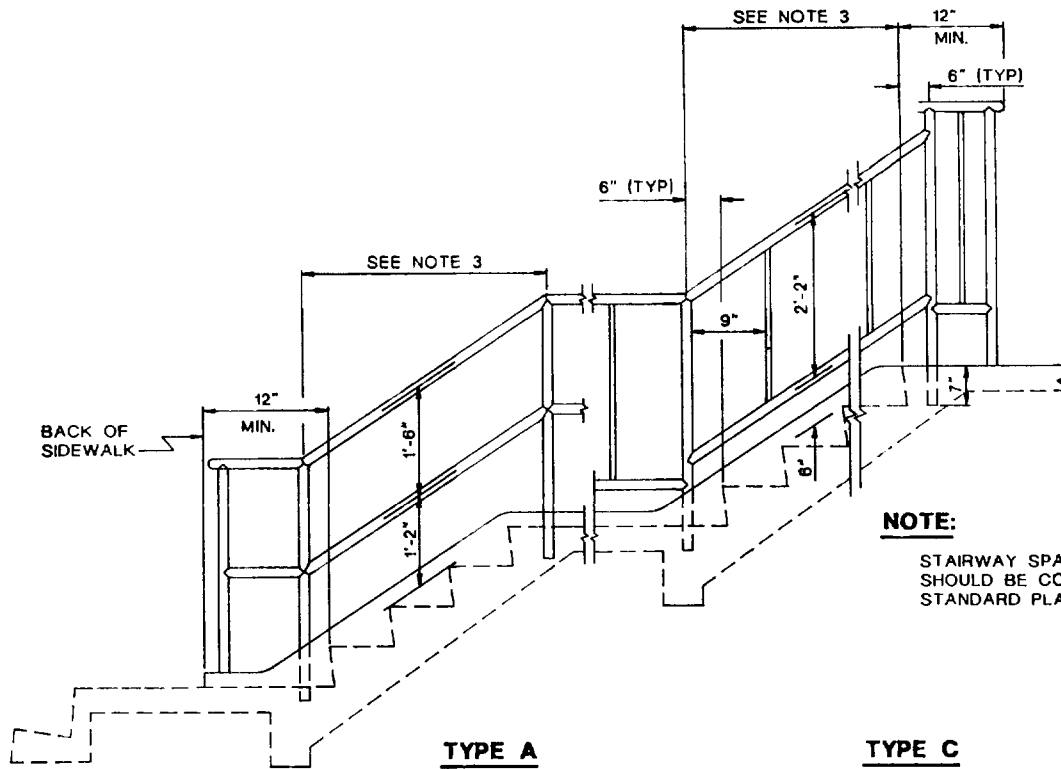
APPROVED BY:
Wm. Reed 6-1-92
 CITY ENGINEER
 R.C.E. 24953

**NON PUBLIC-PROTECTIVE-
 METAL HAND RAILINGS**

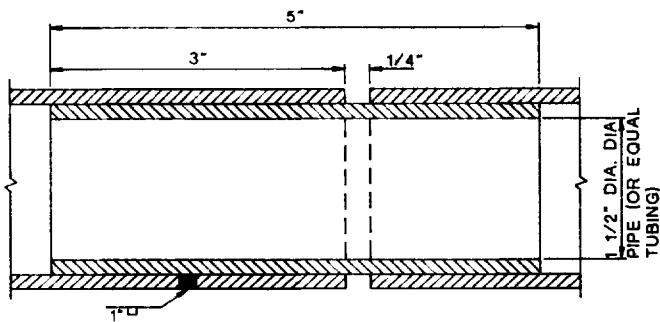
DATE: _____

USE WITH STANDARD SPECIFICATIONS FOR PUBLIC WORKS CONSTRUCTION

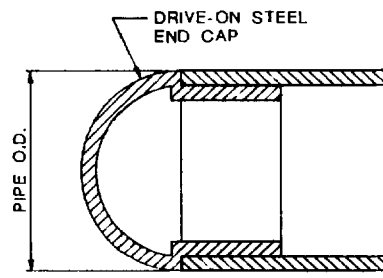
STANDARD PLAN
 602
 SHEET 1 OF 2



HANDRAIL INSTALLATION ON STAIRWAYS



SLIP JOINT DETAIL



CAP DETAIL FOR RAIL END

NOTES:

1. TYPE B OR TYPE C SHALL BE USED WHERE ADJACENT GRADE IS MORE THAN 2'-6" BELOW LANDING OR SIDEWALK FINISHED SURFACE.
2. PROVIDE SLIP JOINTS AT STAIRWAY EXPANSION JOINTS AND AT EVERY 24 FEET ON CENTER MAXIMUM.
3. MAXIMUM SPACING OF POST SHALL BE 8 FEET ON STRAIGHT ALIGNMENT 6 FEET ON CURVED ALIGNMENT LESS THAN 30 FEET RADIUS. SPACING SHALL BE UNIFORM BETWEEN CHANGES IN ALIGNMENT.

CITY OF RANCHO CUCAMONGA, CALIFORNIA

7-20-92

APPROVED BY:

Whorrell 6-1-92
 CITY ENGINEER DATE
 R.C.E. 24953

**NON PUBLIC-PROTECTIVE-
 METAL HAND RAILINGS**

USE WITH STANDARD SPECIFICATIONS FOR PUBLIC WORKS CONSTRUCTION

STANDARD PLAN

602

SHEET 2 OF 2