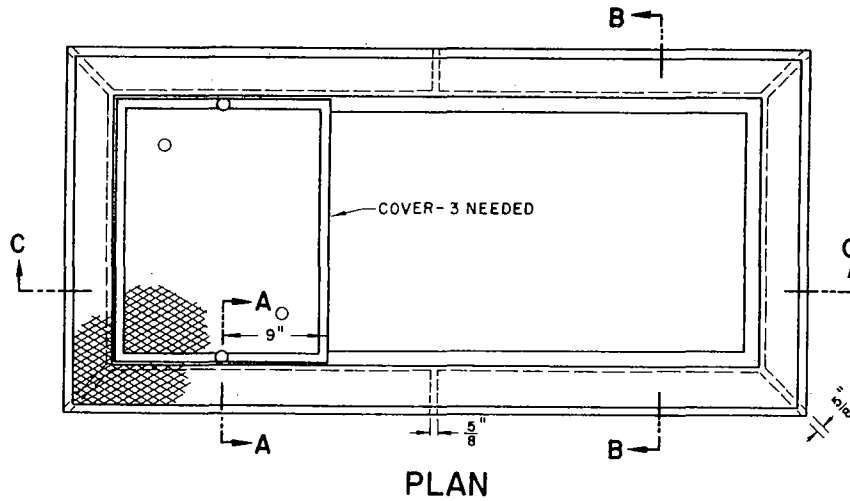
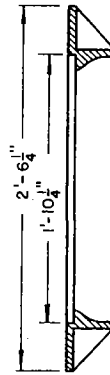


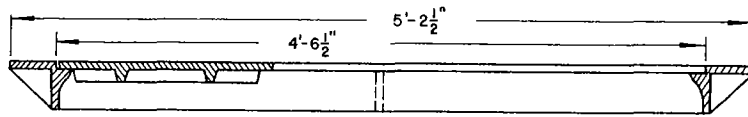
REVISED & REDRAWN BY: FRED H. KOGA 11-62. CHECKED BY: J. MONTAPERTO 11-62.  
 REV. 12-68: ADD NOTE NO. 6.  
 REV. 11-75: REV. NOTE NO. 3 & 4



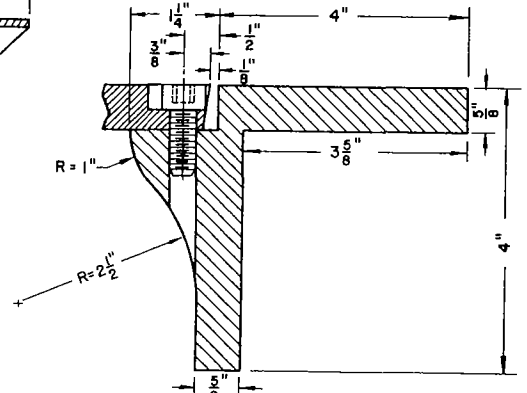
PLAN



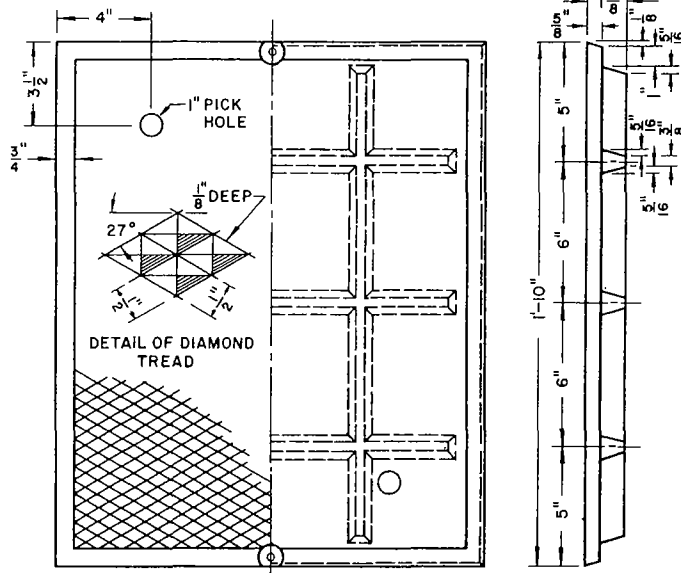
SECTION B-B



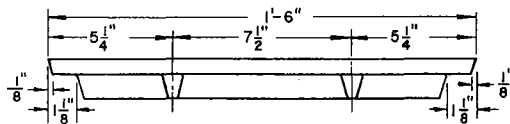
SECTION C-C



SECTION A-A



DETAIL OF DIAMOND TREAD



DETAIL OF COVER

NOTES:

1. FRAME AND COVER SHALL BE CAST IRON.
2. FRAME AND COVER TO BE USED IN PARKWAYS ONLY.
3. DRILL COVER  $\frac{7}{16}$ " D AND COUNTERBORE  $1\frac{1}{8}$ " X  $\frac{3}{8}$ ". DRILL AND TAP THROUGH FRAME  $\frac{3}{8}$ "-16NC-2.
4. USE TWO  $\frac{3}{8}$ "-16 X 1" STAINLESS STEEL SOCKET CAP SCREW PER COVER. APPLY HIGH ADHESIVE, OPEN GEAR GREASE TO THREADED PORTION PRIOR TO INSERTION.
5. WEIGHT OF ONE COVER IS 74 LB. WEIGHT OF FRAME IS 232 LB.
6. MANHOLE FRAME AND COVER FOR USE IN NON-TRAFFIC AREAS.

LOS ANGELES COUNTY ROAD DEPARTMENT

MANHOLE FRAME & COVER NO. 5

STANDARD PLAN

74-05

APPROVED

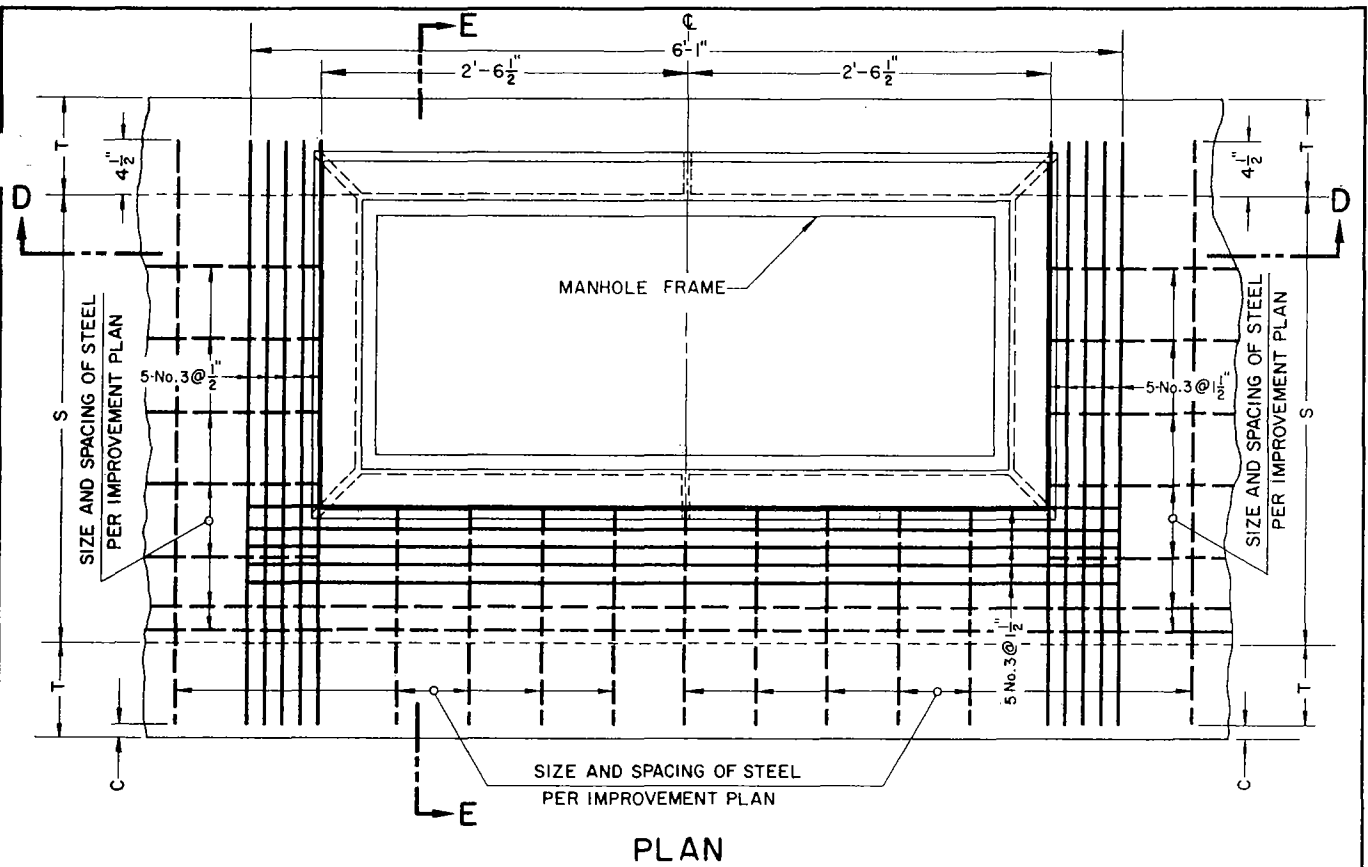
*J. L. Mosher*

ROAD COMMISSIONER

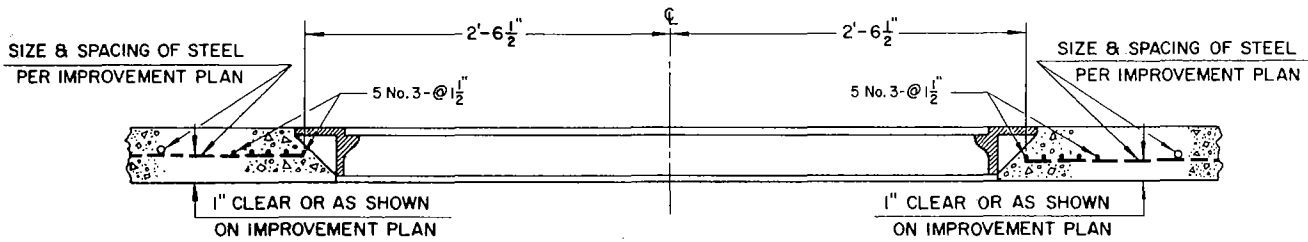
1 Dec 67

DATE

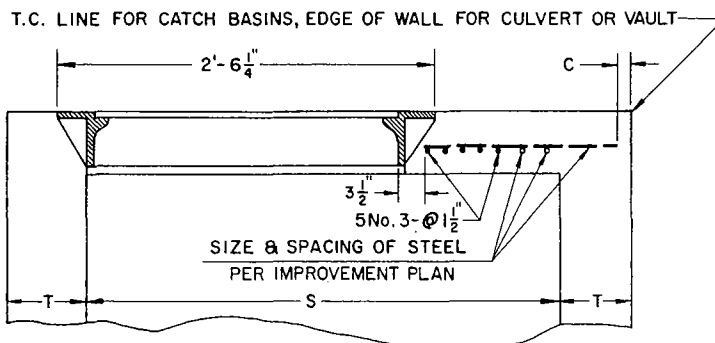
PAGE 1 OF 2



PLAN



SECTION D-D



C = 1 1/2" FOR EDGE OF WALL,  
 1" FOR CATCH BASIN WITH STEEL ANGLE,  
 5" FOR CATCH BASIN WITH FACE PLATE.

SECTION E-E

LOS ANGELES COUNTY ROAD DEPARTMENT

MANHOLE FRAME & COVER NO. 5

STANDARD PLAN

74-05

PAGE 2 OF 2

DRAWN BY L.L.L. 7-67. CHECKED BY F.H.K. 7-67.