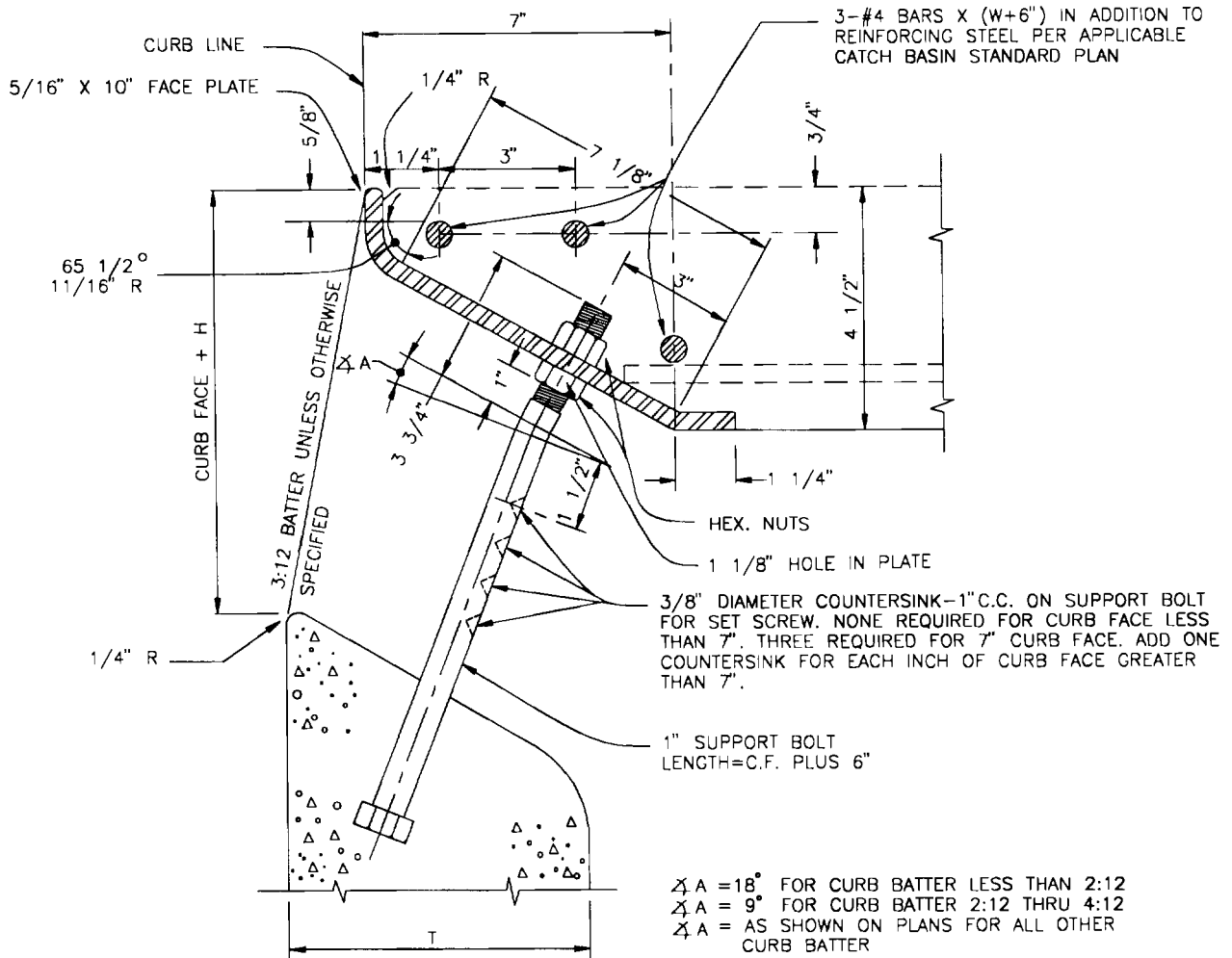
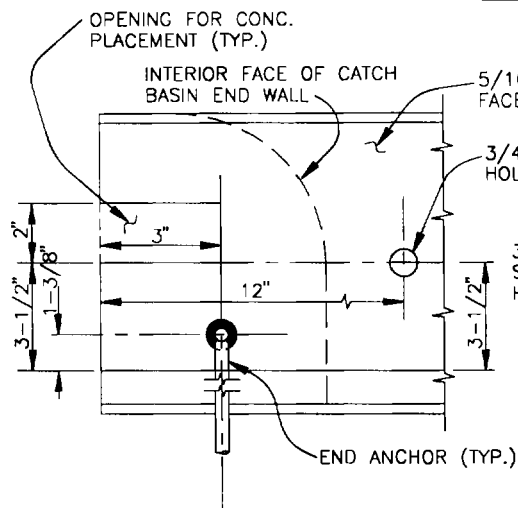


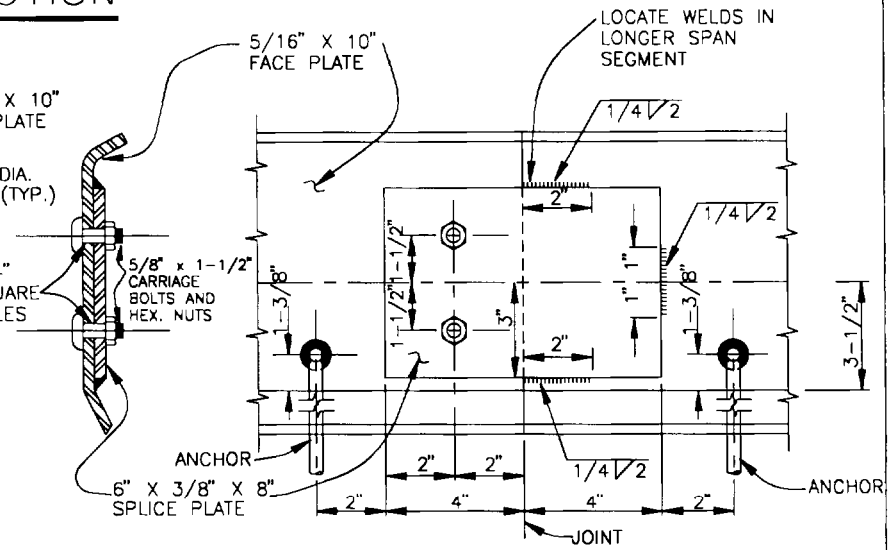
SUPPORT BOLT AND FACE PLATE (4 1/2" TOP SLAB)



SECTION



END DETAIL



SPlice DETAIL

CITY OF RANCHO CUCAMONGA, CALIFORNIA

REVISED 6-210-95

APPROVED BY:

W. J. Neel 7/13/95
 CITY ENGINEER DATE
 R.C.E. 24953

CATCH BASIN FACE PLATE ASSEMBLY AND PROTECTION BAR

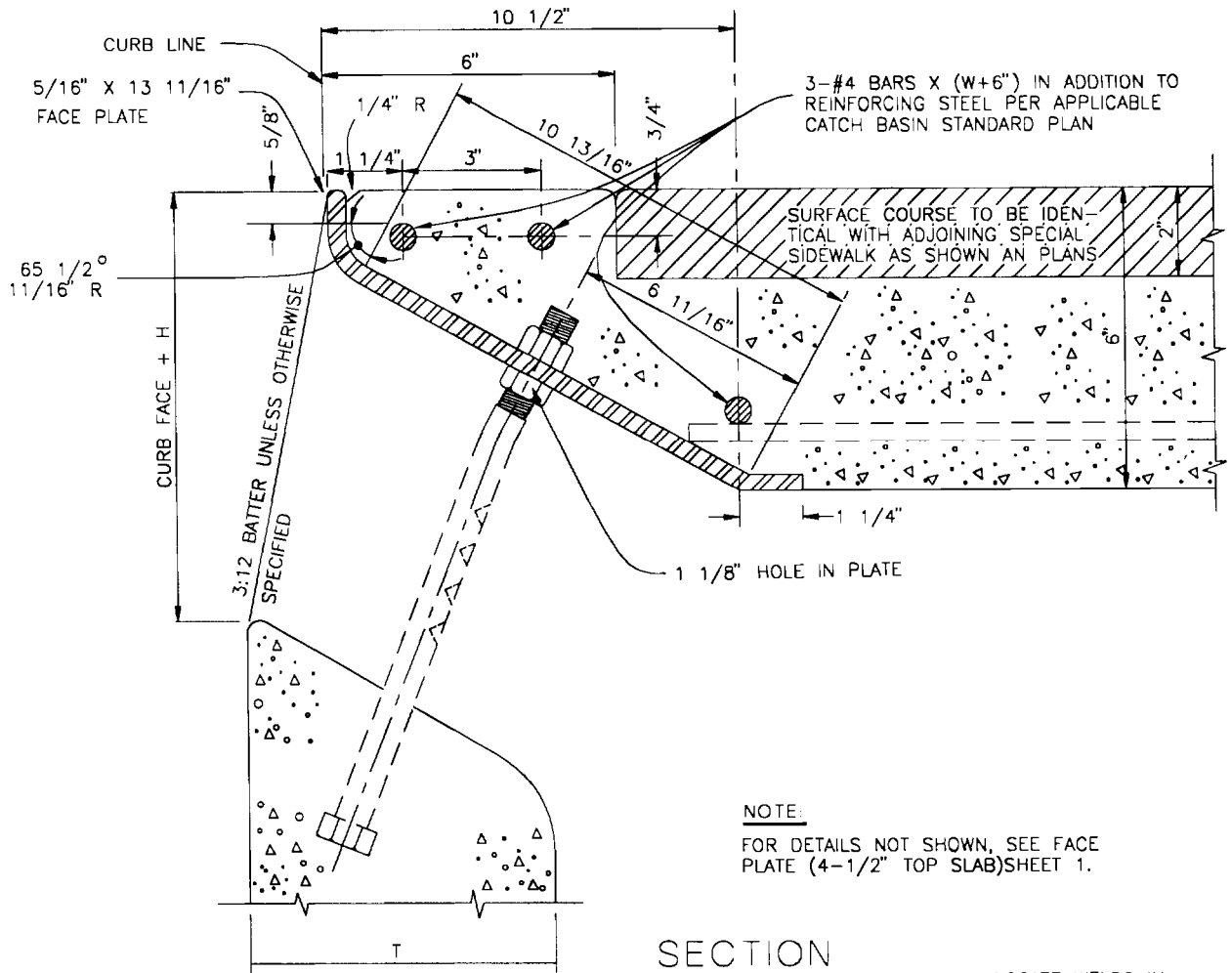
USE WITH STANDARD SPECIFICATIONS FOR PUBLIC WORKS CONSTRUCTION

STANDARD PLAN

305

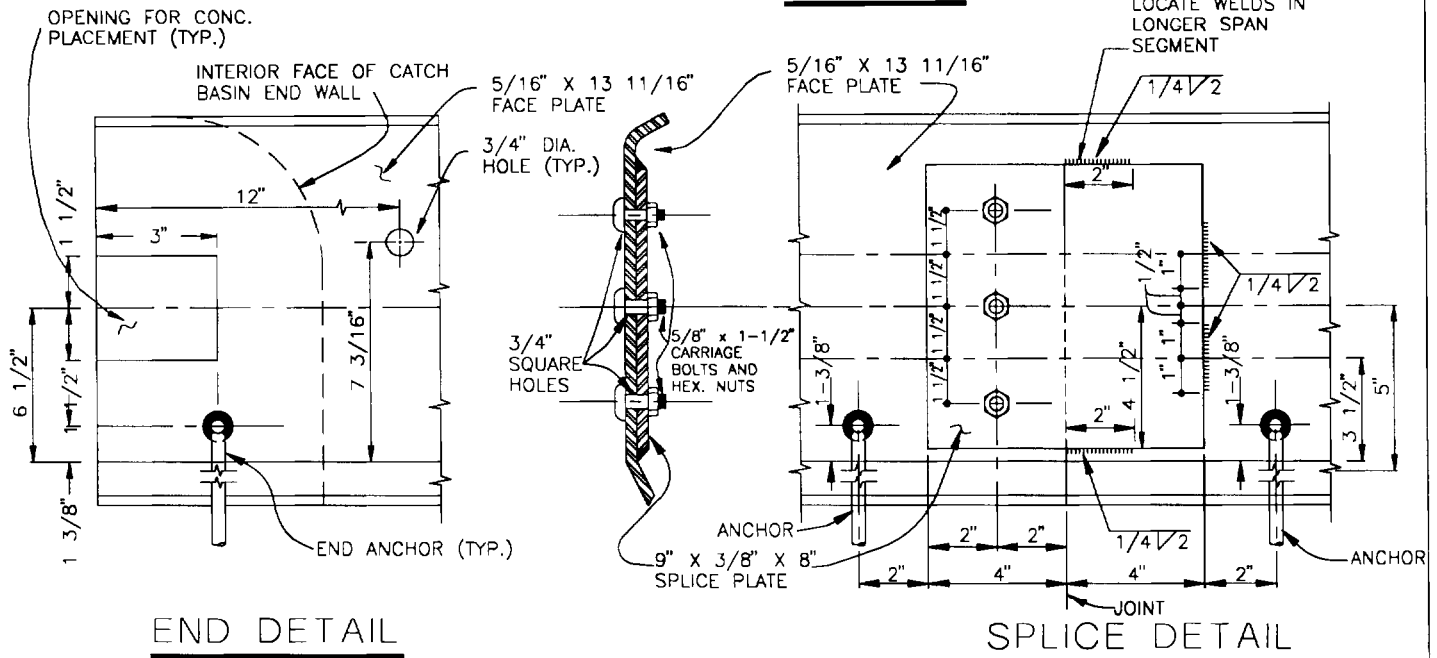
SHEET 1 OF 6

SUPPORT BOLT AND FACE PLATE (6" TOP SLAB)



NOTE:
FOR DETAILS NOT SHOWN, SEE FACE PLATE (4-1/2" TOP SLAB) SHEET 1.

SECTION



CITY OF RANCHO CUCAMONGA, CALIFORNIA

REVISIONS
6-20-95

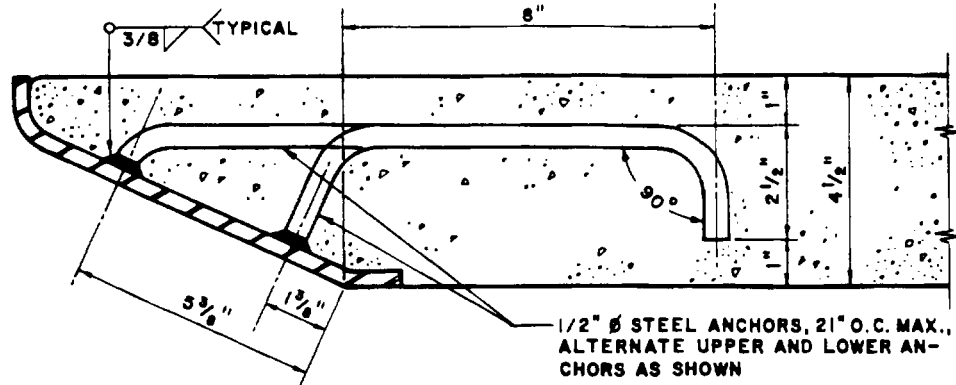
APPROVED BY:
Mr. J. J. J. J.
CITY ENGINEER
R.C.E. 24953
DATE: 7/13/88

CATCH BASIN FACE PLATE ASSEMBLY AND PROTECTION BAR

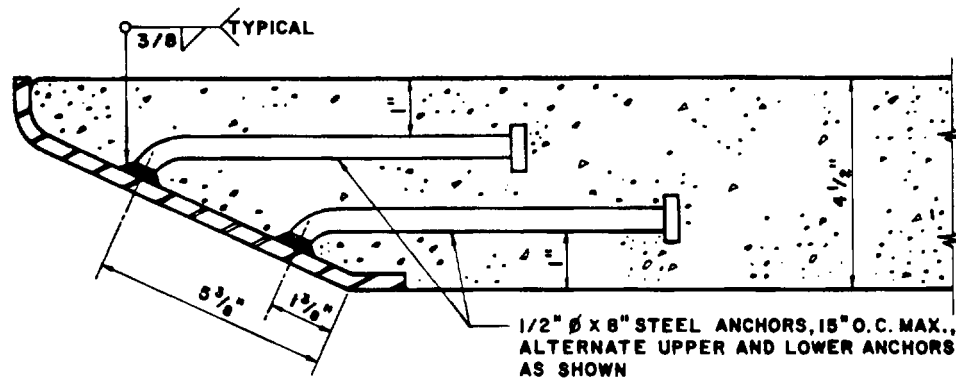
USE WITH STANDARD SPECIFICATIONS FOR PUBLIC WORKS CONSTRUCTION

STANDARD PLAN
305
SHEET 2 OF 6

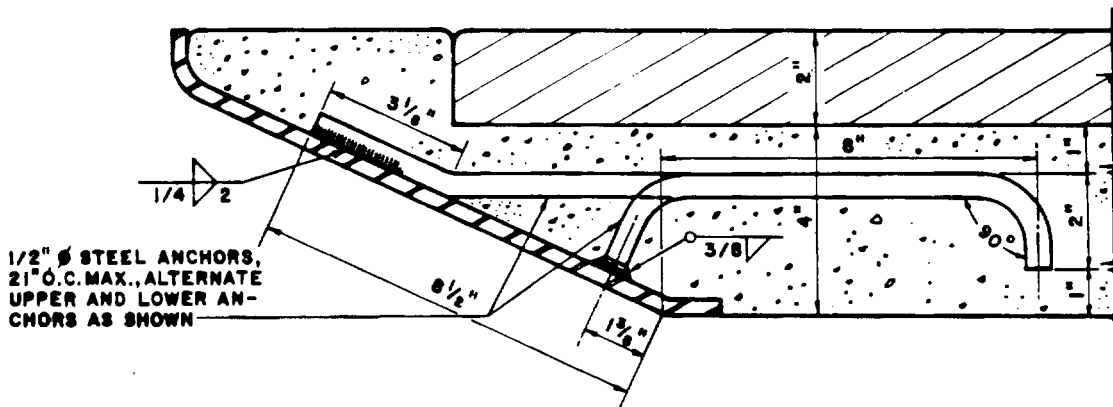
FACE PLATE ANCHORS



HOOK ANCHOR - 4 1/2" TOP SLAB



ROUND HEAD ANCHOR - 4 1/2" TOP SLAB



HOOK ANCHOR - 6" TOP SLAB

CITY OF RANCHO CUCAMONGA, CALIFORNIA

APPROVED BY:

McNeil 6-1-92
CITY ENGINEER DATE
R.C.E. 24953

CATCH BASIN FACE PLATE ASSEMBLY
AND PROTECTION BAR

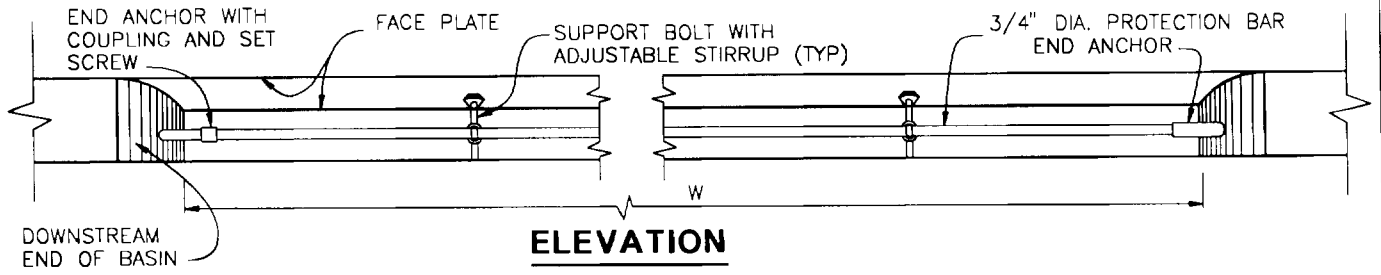
USE WITH STANDARD SPECIFICATIONS FOR PUBLIC WORKS CONSTRUCTION

STANDARD PLAN

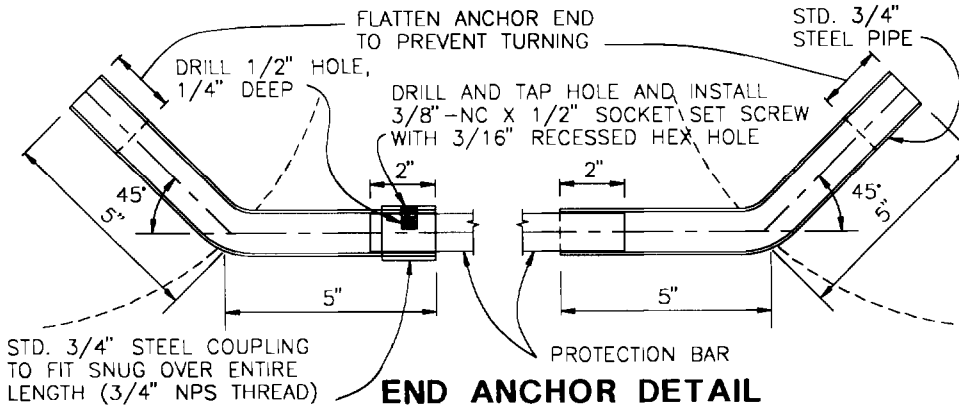
305

SHEET 3 OF 6

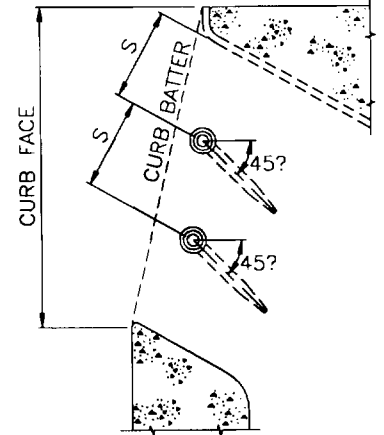
PROTECTION BAR AND SUPPORT BOLT(S) WITH ADJUSTABLE STIRRUP(S)-(TYPE A)



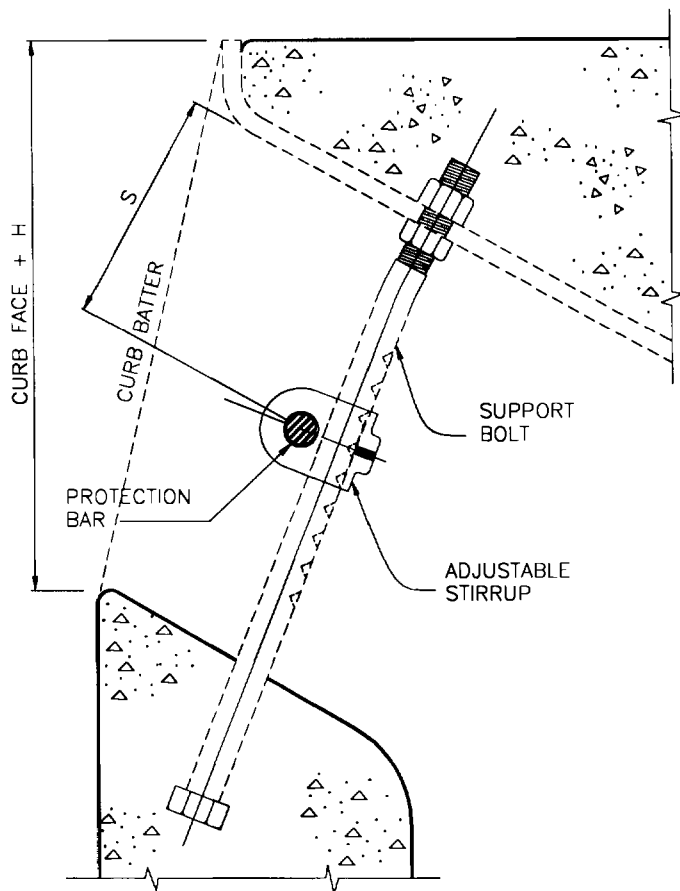
ELEVATION



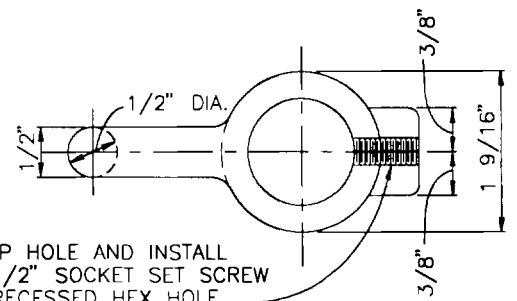
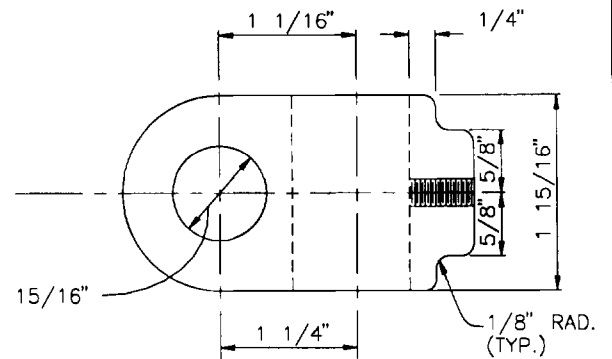
END ANCHOR DETAIL



DOUBLE PROTECTION BAR DETAIL



PROTECTION BAR & STIRRUP LOCATION



DRILL AND TAP HOLE AND INSTALL
3/8"-NC X 1/2" SOCKET SET SCREW
WITH 3/16" RECESSED HEX HOLE

STIRRUP DETAIL

CITY OF RANCHO CUCAMONGA, CALIFORNIA

REVISIONS
6-20-95

APPROVED BY:

M. J. J. J.
CITY ENGINEER
R.C.E. 24953

7/13/95
DATE

CATCH BASIN FACE PLATE ASSEMBLY AND PROTECTION BAR

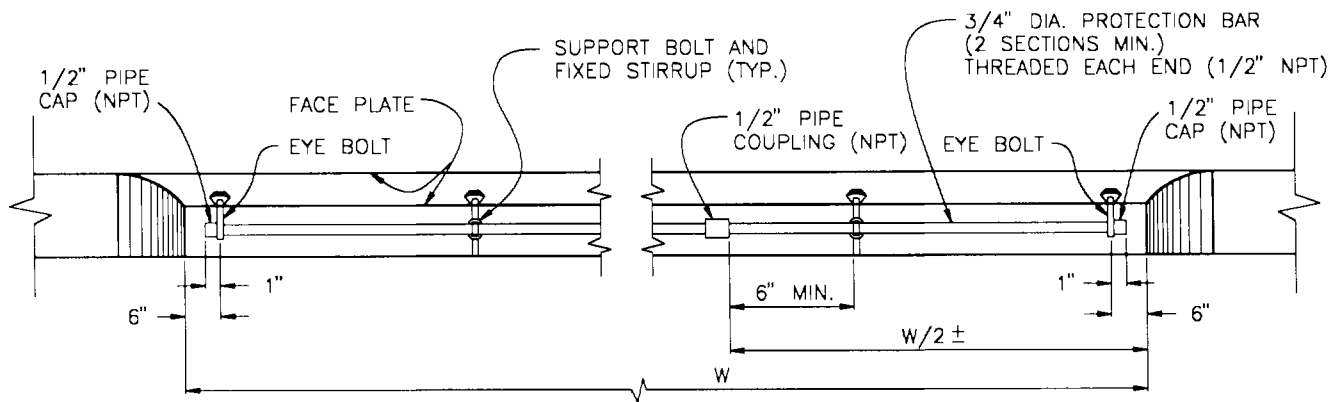
USE WITH STANDARD SPECIFICATIONS FOR PUBLIC WORKS CONSTRUCTION

STANDARD PLAN

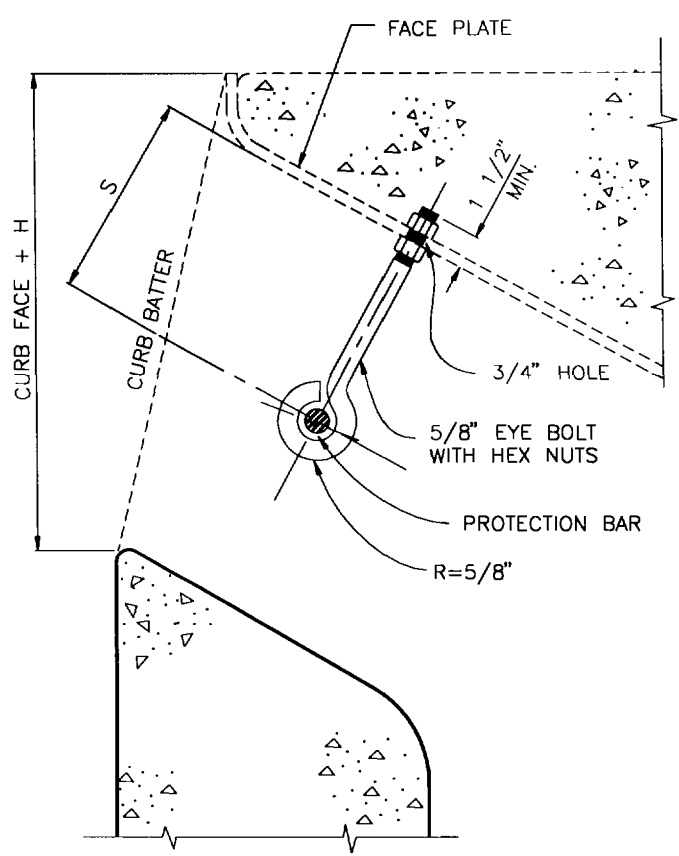
305

SHEET 4 OF 6

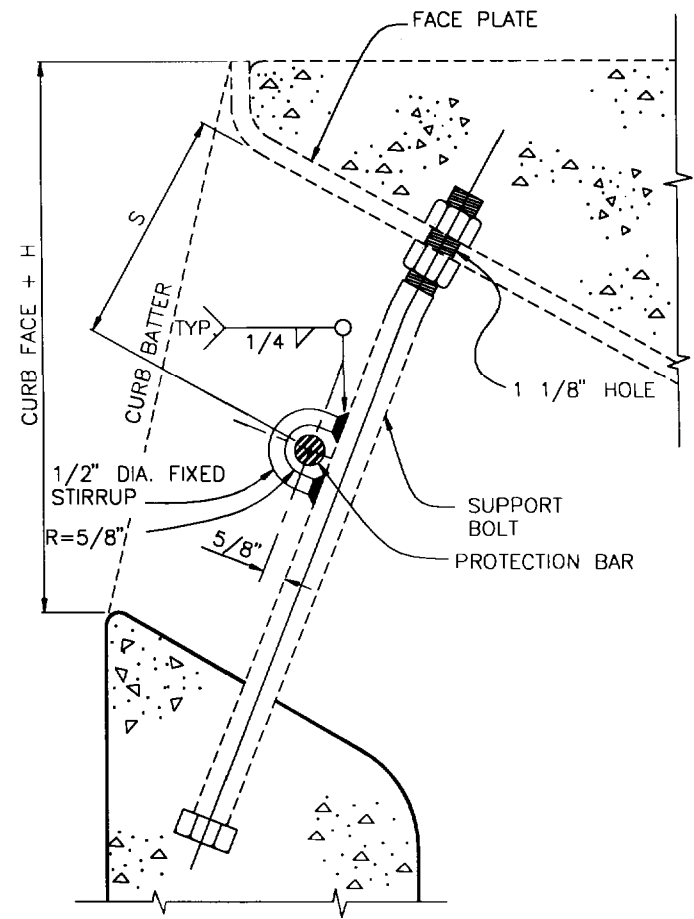
PROTECTION BAR AND SUPPORT BOLT(S) WITH FIXED STIRRUP(S)-(TYPE B)



ELEVATION



EYE BOLT DETAIL



STIRRUP DETAIL

CITY OF RANCHO CUCAMONGA, CALIFORNIA

REVISIONS
6-20-95

APPROVED BY:
M. J. Jones
CITY ENGINEER
R.C.E. 24953
DATE 7/3/95

**CATCH BASIN FACE PLATE ASSEMBLY
AND PROTECTION BAR**

USE WITH STANDARD SPECIFICATIONS FOR PUBLIC WORKS CONSTRUCTION

STANDARD PLAN
305
SHEET 5 OF 6

NOTES:

GENERAL

1. ALL PARTS SHALL BE STEEL EXCEPT SET SCREWS, WHICH SHALL BE STAINLESS STEEL.
2. EXCLUDING SET SCREWS, ALL EXPOSED METAL PARTS SHALL BE GALVANIZED AFTER FABRICATION.
3. CURB FACE SHALL BE AS NOTED ON THE PROJECT PLANS
4. CURB BATTER SHALL BE 3:12 UNLESS OTHERWISE SPECIFIED.

FACE PLATE

5. FACE PLATE LENGTHS SHALL BE CATCH BASIN "W" PLUS 12 INCHES EXCEPT AS MODIFIED FOR A "CURB" OPENING CATCH BASIN AT "DRIVEWAY".
6. WHEN THE LENGTH OF THE FACE PLATE IS BETWEEN 22 FEET AND 43 FEET, 2 SECTION MAY BE USED. WHEN THE LENGTH EXCEEDS 43 FEET, 3 SECTIONS MAY BE USED. SECTIONS SHALL BE SPLICED ACCORDING TO THE APPLICABLE SPLICE DETAIL. SPLICE SHALL BE PLACED ONE FOOT FROM A SUPPORT BOLT.
7. WHERE CATCH BASINS ARE CONSTRUCTED ON CURVES, THE MAXIMUM CHORD LENGTH FOR THE FACE PLATE SHALL BE SUCH THAT THE MAXIMUM PERPENDICULAR DISTANCE TO THE TRUE CURB SHALL NOT EXCEED ONE INCH. WHERE MORE THAN ONE CHORD IS REQUIRED, CHORD LENGTHS SHALL BE EQUAL. CHORD SECTIONS SHALL BE SPLICED ACCORDING TO THE APPLICABLE SPLICED DETAIL (MODIFIED TO FIT THE CHORD DEFLECTION) AND A SUPPORT BOLT SHALL BE PLACED ONE FOOT FROM THE SPLICE.
8. ROUND HEAD ANCHORS FOR THE FACE PLATE SHALL BE NELSON H-4F SHEAR CONNECTOR, KSN WELDING SYSTEMS DIVISION SHEAR CONNECTOR OR EQUAL.

SUPPORT BOLT

9. SUPPORT BOLTS ARE REQUIRED WHEN THE LENGTH OF THE CATCH BASIN OPENING IS 7 FEET OR GREATER, AND SHALL BE EVENLY SPACED ACROSS THE OPENING. SPACING SHALL NOT BE LESS THAN 3 FEET 6 INCHES ON CENTER NOR GREATER THAN 5 FEET ON CENTER.

STIRRUP

10. FOR TYPE A, THE MATERIAL SHALL BE CAST STEEL.

PROTECTION BAR

11. TYPE A SHALL BE USED UNLESS OTHERWISE SPECIFIED.
12. FOR TYPE A, THE BAR SHALL BE CUT TO FIT IN THE FIELD. WHEN "W" IS OVER 21 FEET, THE PROTECTION BAR SHALL CONSIST OF 2 OR MORE SECTIONS. A SPECIAL CONNECTOR BETWEEN THE PROTECTION BAR PIECES SHALL CONSIST OF A 5-INCH LENGTH OF STANDARD 3/4-INCH PIPE WITH STANDARD COUPLINGS FULLY THREADED ONTO EACH END DRILLED AND TAPPED FOR A SOCKET SET SCREW AS DETAILED FOR THE DOWNSTREAM END ANCHOR.
13. FOR TYPE B, THE BAR SHALL BE TWO PIECES. TWO EYE BOLTS AND A WELDED STIRRUP ON EACH SUPPORT BOLT ARE REQUIRED.
14. NUMBER OF PROTECTION BARS AND LOCATION (S) ARE AS FOLLOWS:

		MAXIMUM CURB FACE													S DIMENSION
		6"	7"	8"	9"	10"	11"	12"	13"	14"	15"	16"	17"	18"	
CURB BATTER	0:12	0	0	3.5"	3.5"	3.5"	4.5"	4.5"	5.5"	3.5"	3.5"	4.5"	4.5"	4.5"	
	1:12	0	0	3.5"	3.5"	3.5"	4.5"	4.5"	5.5"	3.5"	3.5"	4.5"	4.5"	5.5"	
	2:12	0	0	3.5"	3.5"	4.5"	4.5"	5.5"	3.5"	3.5"	4.5"	4.5"	5.5"	5.5"	
	3:12	0	0	3.5"	3.5"	4.5"	4.5"	5.5"	3.5"	4.5"	4.5"	5.5"	5.5"	4.5"	
	4:12	0	3.5"	3.5"	4.5"	4.5"	5.5"	3.5"	3.5"	4.5"	4.5"	5.5"	4.5"	4.5"	
		0	1*				2*				3*				
		NUMBER OF PROTECTION BARS													

FOR OTHER CURB FACE OR BATTER, SEE PROJECT PLANS
 *TYPE A PROTECTION BAR ONLY

CITY OF RANCHO CUCAMONGA, CALIFORNIA

APPROVED BY:

Whitney 6-1-92
 CITY ENGINEER DATE
 R.C.E. 24953

**CATCH BASIN FACE PLATE ASSEMBLY
 AND PROTECTION BAR**

USE WITH STANDARD SPECIFICATIONS FOR PUBLIC WORKS CONSTRUCTION

STANDARD PLAN

305

SHEET 6 OF 6

7-20-92
REVISED