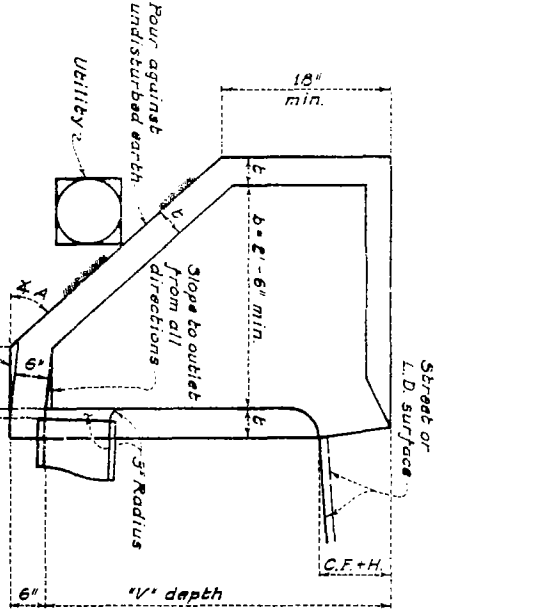
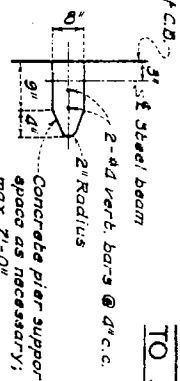


SECTION



SECTION

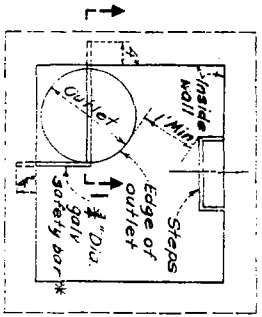
CASE II
CATCH BASIN MODIFICATION TO AVOID EXISTING UTILITY



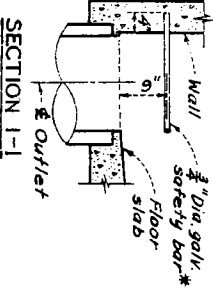
DETAIL A

SECTION X-X

CASE I
CATCH BASIN MODIFICATION WITH REAR CULVERT ENTRANCE AND/OR ENTRANCE PROJECTION



PLAN



SECTION 1-1

*Note: Safety bar shall be 3/4" φ galv, hot-rolled steel per A.S.T.M. designation 4-36.

CASE III

SAFETY BAR FOR DROP OUTLET CATCH BASIN

DESIGN NOTES

1. MODIFICATIONS ARE TO BE USED AS REQUIRED BY THE PROJECT DRAWINGS. ANY ADDITIONAL CHANGES ARE SUBJECT TO THE APPROVAL OF THE ENGINEER.
2. DETAILS NOT SHOWN SHALL BE PER THE APPLICABLE CATCH BASIN STANDARD DRAWINGS.
3. REFER TO THE PROJECT DRAWINGS FOR DETAILS OF THE UTILITY AND CULVERT.
4. INTERFERING PORTIONS OF EXISTING CULVERTS SHALL BE REMOVED ON A LINE NORMAL TO THE CULVERT CENTER LINE AND A PORTION OF THE CULVERT RECONSTRUCTED IF REQUIRED. SAW CUTTING SHALL BE USED TO PROVIDE A NEAT JOINT ON THE EXPOSED SURFACE.
5. PLACE STEPS IN END WALL OF CATCH BASIN UNLESS OTHERWISE SHOWN.
6. WHEN REINFORCEMENT IS REQUIRED BY STANDARD DRAWING NO. 2-D 172, IT SHALL BE PLACED TO THE CONFIGURATION OF THE MODIFIED BASIN. IF ANGLE EXCEEDS 45 DEGREES THE SLOPING PORTION OF THE INVERT SHALL BE REINFORCED AS THE REAR WALL. LENGTH OF BARS SHALL BE INCREASED AS NECESSARY.
7. ELECTRICALLY WELDED STUDS 1/2" x 8" NELSON HAF OR EQUAL MAY BE USED IN LIEU OF THE DEFORMED BARS SHOWN. IF THE TOP SLABS OF THE CATCH BASIN AND THE CULVERT ARE NOT IN THE SAME PLANE THE ANCHORS ON THE CULVERT SIDE SHALL BE OMITTED.
8. NO. 4 BARS @ 10" MAY BE USED IN LIEU OF NO. 3 BARS @ 6".

LOS ANGELES COUNTY FLOOD CONTROL DISTRICT MODIFICATIONS FOR SIDE OPENING CATCH BASINS

RECOMMENDED BY	APPROVED BY	DATE	DWG. NO.	SHEET
		Apr-27-72	2-D461	1 OF 1

MARK	DATE	DESCRIPTION
R. Fujimoto	2-1-74	74 0023 alterations
R. Smith	6-23-75	Added Case II & rev. Note 5

REVISIONS
DESIGNED BY: V. Morfiner
SUBMITTED BY: C. Hollaborn