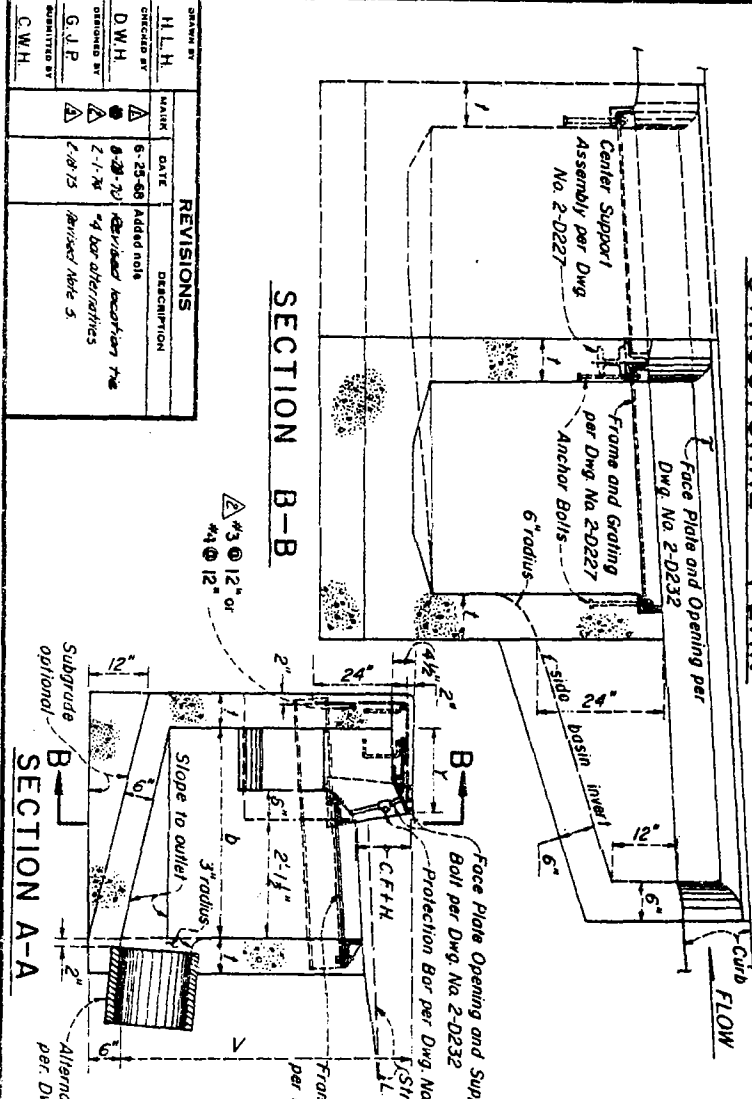
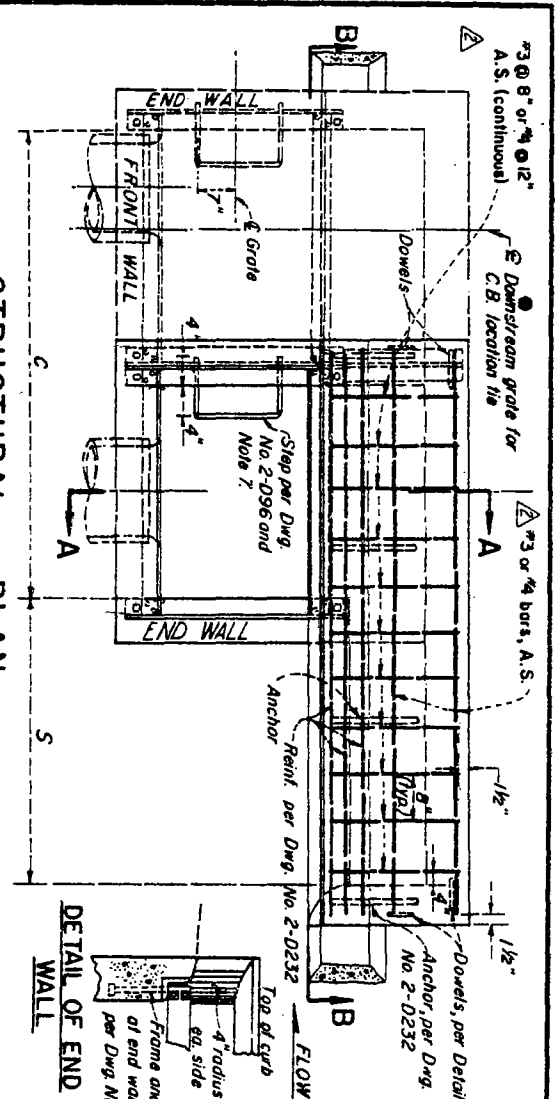


W = C + S



DATE	REVISIONS
6-25-66	Added hole
8-28-70	Revised description
7-1-74	4 bar alternatives
7-28-75	Revised Note 5

DRAWN BY: H.L.H.
 CHECKED BY: D.W.H.
 DESIGNED BY: G.J.P.
 SUBMITTED BY: C.W.H.

NOTES

1. DESIGNATION: CATCH BASIN NO. 6 SHALL BE CASE A WITH ONE GRATE, UNLESS OTHERWISE SHOWN ON THE GENERAL PLAN.
2. GRATINGS: ADDITIONAL GRATINGS MAY BE SPECIFIED AS REQUIRED. GRATINGS AND SUPPORT ASSEMBLIES ARE TO BE POSITIONED AS REQUIRED BY STD. DWGS 2-D 248 AND 2-D 415.
3. CONNECTOR PIPES: PIPE MAY BE ON ANY ALIGNMENT AROUND THE WALLS OF THE MAIN BASIN CHAMBER AS SHOWN ON THE GENERAL PLAN. PIPE SHALL BE TRIMMED TO THE FINAL SHAPE AND LENGTH BEFORE THE PLACEMENT OF CONCRETE.
4. CONCRETE: DESIGN: (f_c=3,000 psi COMPRESSIVE STRENGTH AT 28 DAYS. FLOOR OF THE BASIN SHALL SLOPE FROM ALL WALLS TO THE OUTLET AND SHALL BE GIVEN A STEEL-TROWELED FINISH SURFACE. STREET-SIDE WALLS OF THE BASIN SHALL BE POURED TO THE ELEVATION OF THE ADJACENT LOCAL DEPRESSION OR STREET SURFACE. CURVATURE OF THE SILL AND SIDE WALLS AT THE GUTTER OPENING SHALL BE FORMED BY CURVED FORMS; AND ALL EXPOSED EDGES, OR CORNERS, AND CONCRETE TO METAL FRAME EDGES SHALL BE GIVEN 1/4" RADIUS EDGER FINISH. SURFACE OF ALL EXPOSED CONCRETE SHALL CONFORM IN SLOPE, GRADE, COLOR, AND FINISH TO THE EXISTING, OR PROPOSED, CURB AND WALK ADJACENT TO THE BASIN.

5. REINFORCEMENT: (STANDARD DRAWING NO. 2-D 171)
 TOP SLAB - AS REQUIRED BY THE STRUCTURAL PLAN, WALLS AND FLOORS - AS REQUIRED BY STANDARD DRAWING NO. 2-D 172.
 REINFORCEMENT IN FRONT WALL, END WALLS AND FLOOR SHALL BE PER GRATING BASIN REINFORCEMENT WITH BASIN OPENING = C. REINFORCEMENT IN BACK WALL AND SWEEPER SHALL BE PER CURB OPENING BASIN WITH BASIN OPENING = W AND S, RESPECTIVELY.
6. DIMENSIONS: CURB FACE AT THE CATCH BASIN OPENING SHALL BE AS REQUIRED BY STD. DWGS. NOS. 2-D 248 AND 2-D 415 OR AS SHOWN ON THE GENERAL PLAN.
 B = 4'-6", OR AS SHOWN ON THE GENERAL PLAN.
 H = 21 INCHES WHEN NO L.D. IS USED.
 G = 21 INCHES FOR ONE GRATING; ADD 3'-5 3/8" FOR EACH ADDITIONAL GRATING.
 V = 6 INCHES IF V = 51'-0" OR LESS; 1 = 8 INCHES IF V = 51'-0" OR MORE.
 S = 4'-0", CASE A; 5'-11'-0", CASE B; W = C+S.
 L = VARIABLE TO 2'-4", MAXIMUM.
7. STEPS: (STANDARD DRAWING NO. 2-D 96)
 A TO 31'-0" (INCL.), PLACE ONE STEP 12 INCHES ABOVE THE FLOOR OF THE BASIN.
 B OVER 31'-0", PLACE STEPS AT 12-INCH INTERVALS FROM THE FLOOR OF THE BASIN WITH THE TOP STEPS AT 12 INCHES (MINIMUM) BELOW THE TOP OF THE GRATE. CONSTRUCT STEPS ON FRONT WALL WHEN CONNECTOR PIPE IS ALIGNED TO DOWNSTREAM END WALL.

Supersedes drawing of the same number dated 1-13-39

LOS ANGELES COUNTY
 FLOOD CONTROL DISTRICT
 CATCH BASIN NO. 6
 PLAN, SECTION
 & DETAILS

RECOMMENDED BY: [Signature]	APPROVAL, REQUIREMENTS BY: [Signature]
DATE: 5-15-68	DATE: [Signature]
SCALE: NONE	DWG. NO. 2-D109
SHEET: 1	OF: 1