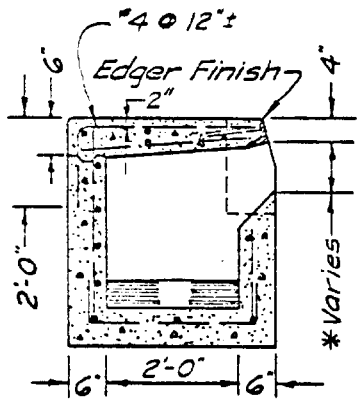


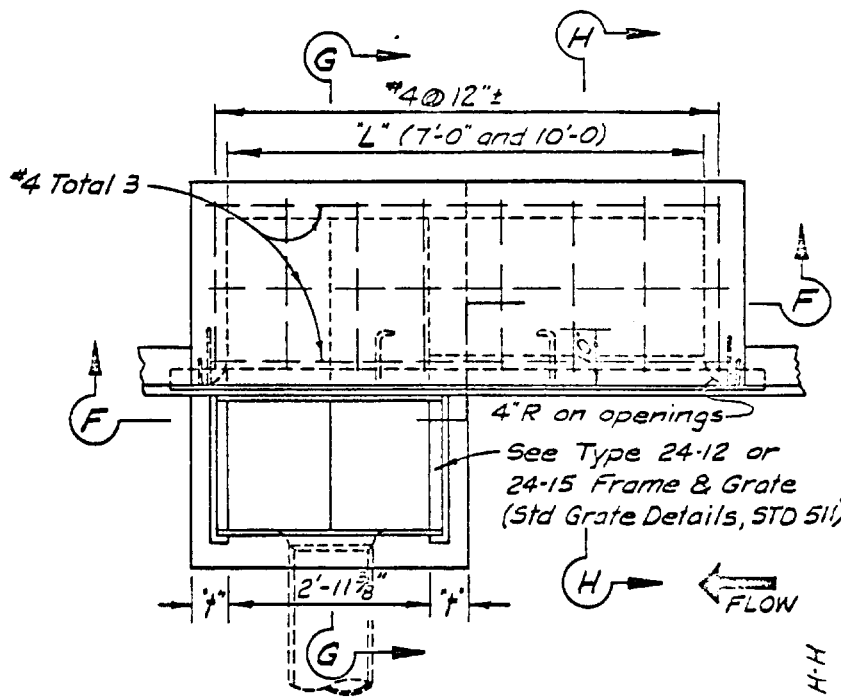
SIMILAR TO EXCEPT AS UNDERLINED.  
 ORANGE CO NO. 303 THUS ---  
 STATE OF CALIF 7-832.5 THUS ---

SUPERSEDES: 507  
 DATED: 9-1-66

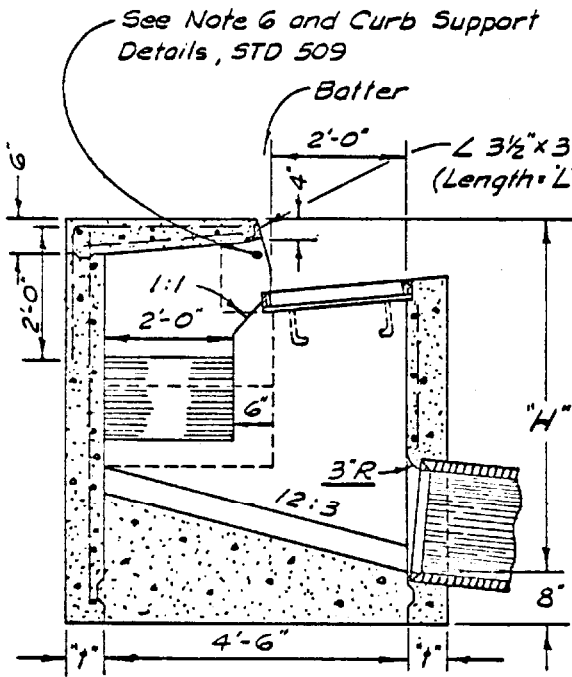
DATE: 12-1-69  
 REV:



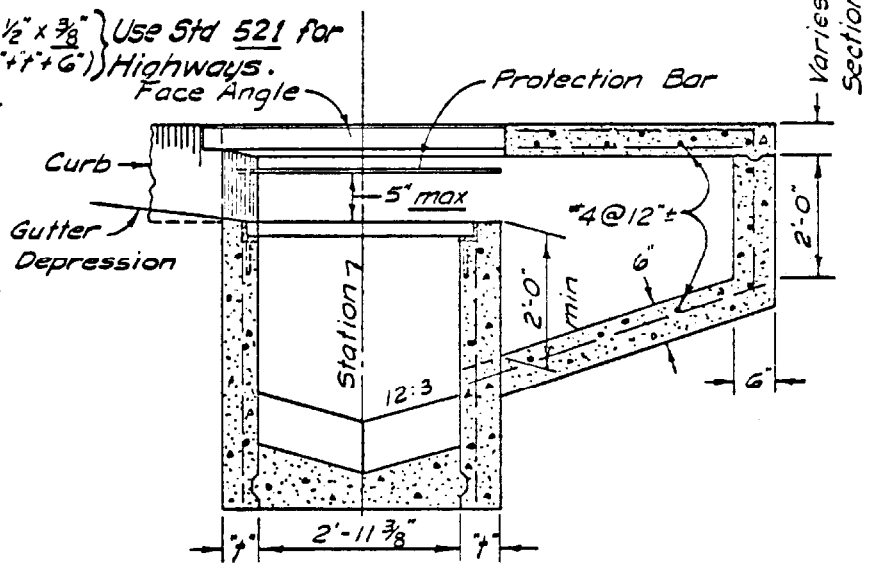
**SECTION H-H**



**PLAN**



**SECTION G-G**



**SECTION F-F**

WALL THICKNESS	
"H"	"t"
8'-0" or Less	6"
8'-1" to 20'-0"	8"

CITY OF BREA

CITY ENGINEER

STANDARD SHEET 1 OF 2

INLET TYPE GOL (Grate, Curb Opening, Large)

507

UNLESS OTHERWISE SPECIFIED ON PLANS AND SPECIFICATIONS:

1. The usual inlet location at a street intersection is at the upstream end of the curb return and clear of the pedestrian crosswalk.
2. Stations of inlets, shown on the plans, apply at center of outlet box.
3. Minimum grade intercept is three (3) percent.
4. Curb opening shall conform to curb alignment. See STD 202.
5. Curvature of the end walls at curb opening shall be formed and shall not be made by plastering.
- \*6. See STD 509 for miscellaneous details, and STD 521 for HIGHWAYS.
7. Outlet pipe shall be trimmed to the final shape and length before concrete is poured.
8. Concrete shall be Class A, per the California Division of Highways - Standard Specifications.
9. The flowline shall be hard, smooth troweled.
10. See STD 510 for inlet depressions.
11. See STD 206 for sidewalk.
12. Grades shall be shown on the Improvement Plans, for top of curb, gutter flowline at inlet and pipe outlet flowline.
13. Min. "L" = 7' for single grate opening. Increase "L" by 3'0" for each grating added. See STD 508 for construction of multiple grates.
14. Not permitted in sump locations.