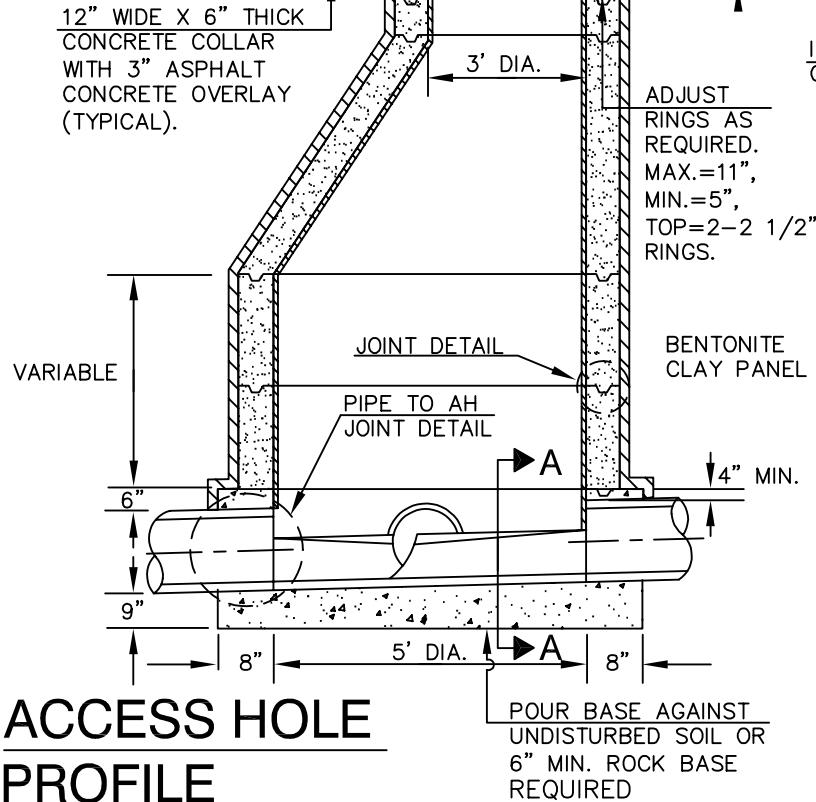


STANDARD CAST IRON ACCESSHOLE
 FRAME & COVER - SEE DWG. NO. S4.

PAVEMENT OR
 FINISH GRADE.

MIN. SLOPE
 1" PER FT.

WIDTH SHALL EQUAL
 INSIDE DIA OF PIPE.



SECTION A-A

NOTES:

INSTALL 1" WELD STRIPS WHERE T-LOCK IS WELDED; I.E., TOP OF CHANNEL, SHAFT TO SHELF, TURN BACK TO PIPE FACE, CORNERS, ETC.

PVC TURN BACK ON PVC PIPING SHALL BE A MINIMUM OF 6".

PVC TURN BACK SHALL BE HELD TIGHT TO PVC PIPING BY 1/2" STEEL BAND WITH CONTACT CEMENT ADHESIVE APPLIED TO BOTH SURFACES.

INSTALL FLAT SHEET PVC ON SHELVES WITH CONTACT CEMENT ADHESIVE APPLIED TO BOTH SURFACES. OVERLAP PVC ONTO ACCESSHOLE SHAFT AND CHANNEL LINER; WELD TO BOTH AND COMPLETE WITH 1" WELD STRIPS.

INSTALL NONSKID SURFACE ON ACCESSHOLE SHELF.

INSTALL PRE FORMED CORNER TURN BACK UNDER RING.

WELD 4" JOINT STRIPS AND FINISH BOTH EDGES WITH 1" WELD STRIPS.

COMPLETE CONCRETE CHANNEL SHALL BE CONSTRUCTED WITH FORMS AND ALL BUT THE LOWER 90° SHALL BE T-LOCK LINED. THE "T'S" SHALL RUN VERTICAL AS IN THE ACCESSHOLE SHAFT AND SHALL BE TACKED AT THE TERMINUS OF THE T-LOCK.

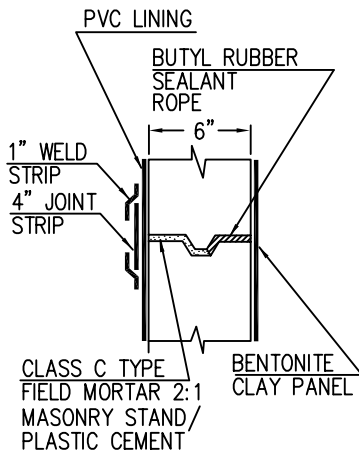
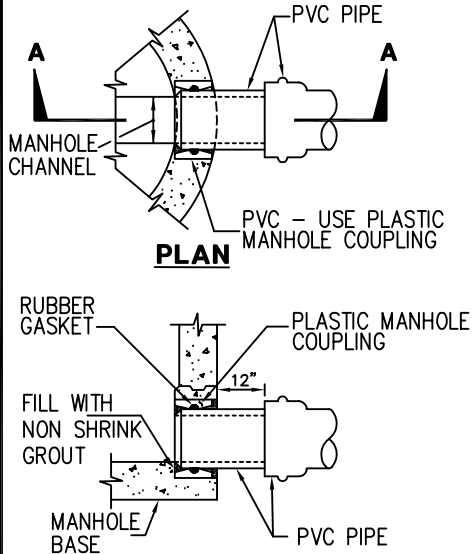
SIDES AND ENDS OF THE BASE TO BE EITHER FORMED, SANDBAGGED OR POURED AGAINST UNDISTURBED EARTH.

ACCESSHOLE SHELVES TO BE SLOPED 1" PER FOOT TO CHANNEL.

WRAP ACCESSHOLE JOINTS BELOW WATER TABLE WITH BENTONITE GEOTEXTILE WATERPROOFING SYSTEM, VOLCLAY VOLTEX OR APPROVED EQUAL.

INTERIOR OF ENTIRE ACCESS HOLE (EXCEPT 90° AREA AT BOTTOM OF CHANNEL) WILL BE WITH WHITE T-LOCK OR EQUAL PVC LINER. ALL LINER JOINTS SHALL BE HEAT WELDED BY WELDERS CERTIFIED BY THE PVC MANUFACTURER. LINER WILL BE SPARK TESTED AT 20,000 VOLTS MIN.

ACCESS HOLE PROFILE



JOINT DETAIL

PIPE TO MANHOLE CONNECTION DETAIL

NOT TO SCALE

REV.	APPROVED	DATE	CITY OF CARLSBAD	
				6-04
			PVC LINED ACCESSHOLE	CITY ENGINEER
				DATE
				SUPPLEMENTAL STANDARD NO.
				S-IA