

NOTES:

1. PROVIDE 1/4" X 18" CHAIN WELD TO COVER AND EYE BOLT.
2. PROVIDE END OR SIDE OPENINGS AS SHOWN ON PLAN OR CROSS SECTION.
3. TOP OF ALL WALLS TO BE FINISHED TO A FLAT PLANE TO PROVIDE EVEN BEARING FOR THE GRATE COVER.
4. ALL METAL SHALL BE GALVANIZED PER ASTM A123.
5. INSTALL A GREEN CARSONITE UTILITY MARKER PRODUCT NUMBER CRM306607 OR EQUIVALENT. UTILITY MARKER SHALL HAVE A 3"X12" SILVER/WHITE HIGH INTENSITY STRIP ON THE FRONT AND A 3"X3" SILVER/WHITE HIGH INTENSITY STRIP ON THE BACK. INSTALL THE UTILITY MARKER PER MANUFACTURER'S STANDARDS. THE MARKER SHALL BE INSTALLED 1' FROM THE EDGE OF PAVEMENT AT THE CENTERLINE OF THE DROP INLET.

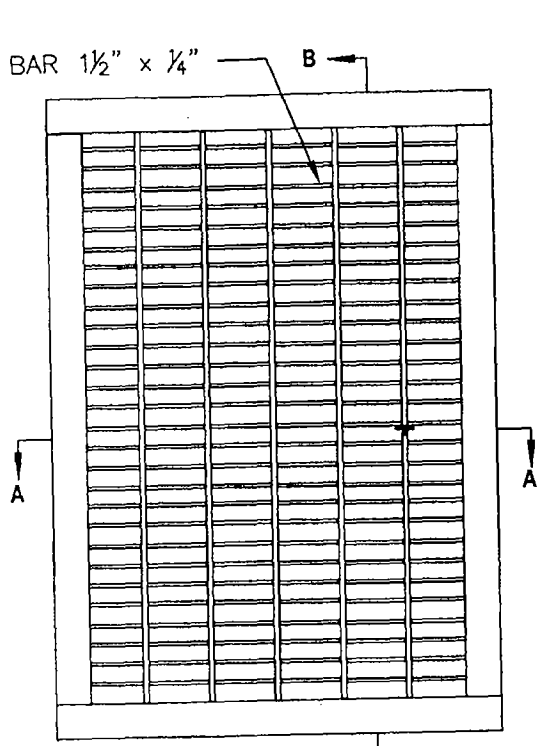
SACRAMENTO COUNTY
MUNICIPAL SERVICES AGENCY

**DROP INLET
TYPE F**

Steve DeVore
DIRECTOR, DEPARTMENT OF WATER RESOURCES

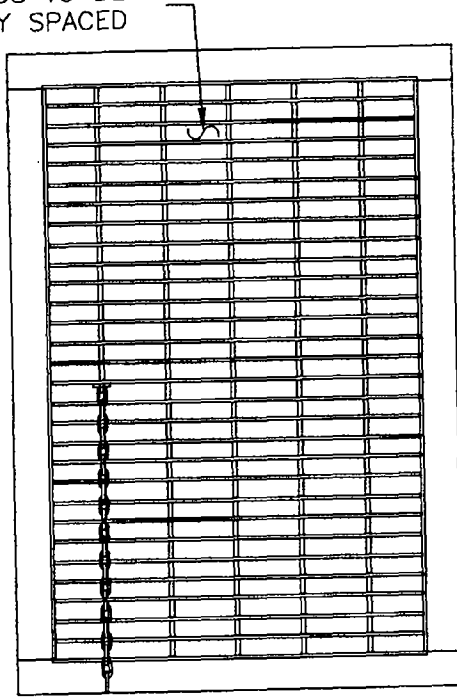
DRAWN BY: STAFF
SCALE: NONE
DATE: 08/07

9-18
SHEET 1 OF 2

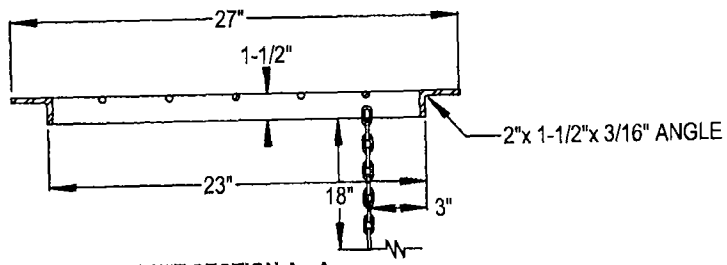


GRATE TOP VIEW

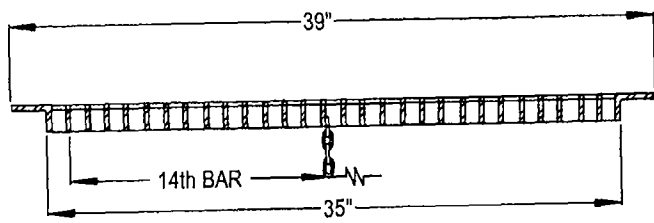
GRATE OPENINGS TO BE EQUALLY SPACED



GRATE BOTTOM VIEW



GRATE SECTION A - A



GRATE SECTION B - B

SACRAMENTO COUNTY
MUNICIPAL SERVICES AGENCY

**DROP INLET
TYPE F**

David DeVine
DIRECTOR, DEPARTMENT OF WATER RESOURCES

DRAWN BY: S. PIMENTEL
SCALE: NONE
DATE: 04/07

9-18
SHEET 2 OF 2