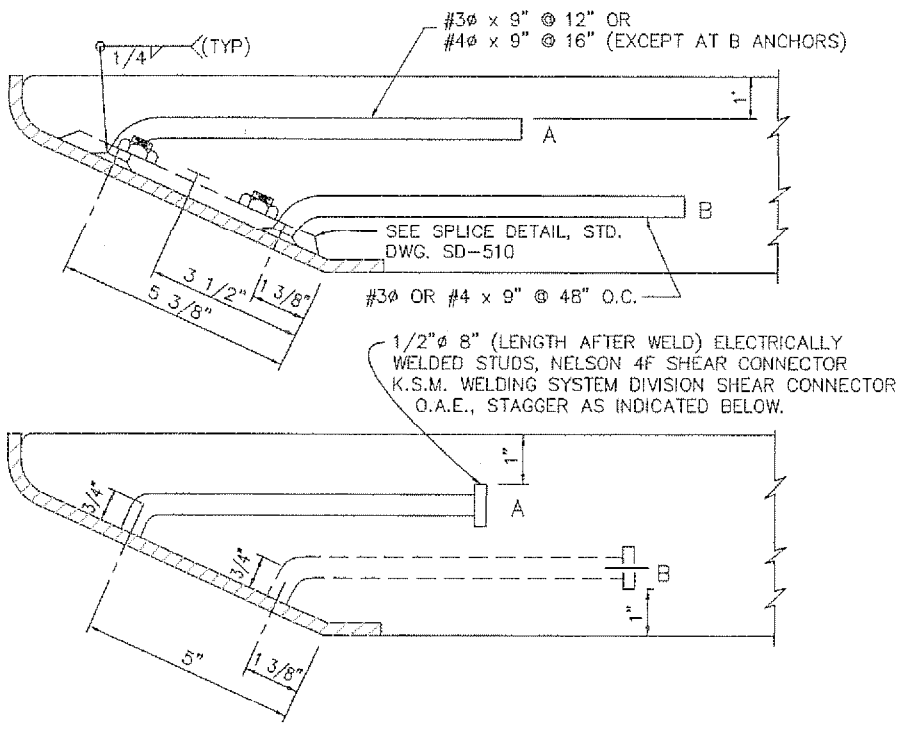


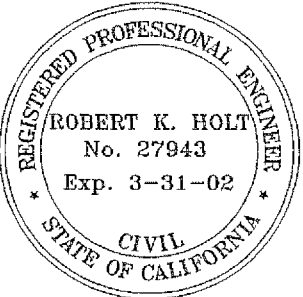
NOTE: "S" IS THE SHORTEST DISTANCE BETWEEN THE SILL OF THE CATCH BASIN AND THE CENTER OF THE NEAREST PROTECTION BAR. SEE NOTE 4, STD. DWG. SS-510.

DETAIL OF CATCH BASIN OPENING



ALTERNATE METHODS FOR FACE PLATE ANCHORAGE

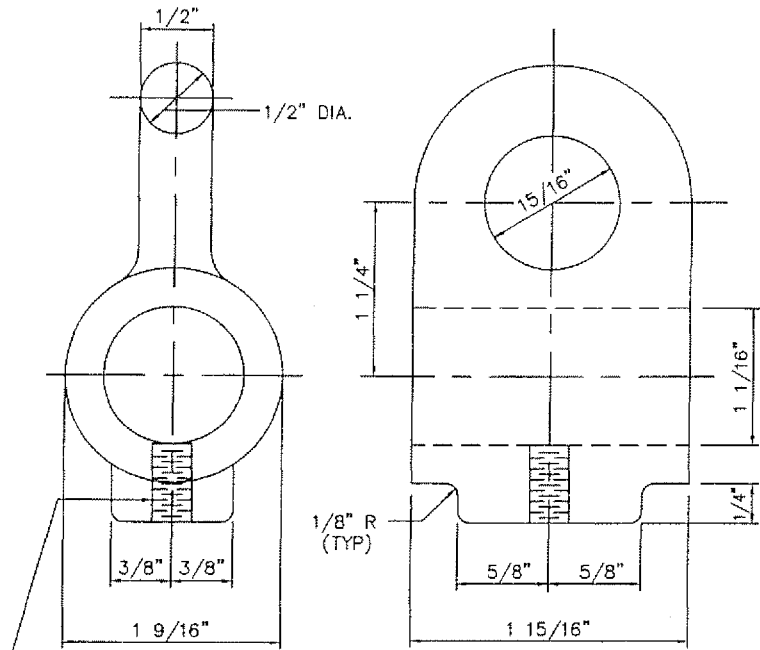
NOTE: REINFORCING STEEL AND SPLICE NOT SHOWN. SPACE "A" ANCHORS APPROXIMATELY EVENLY AT 15" MAX. O.C. BETWEEN END ANCHORS AND ANCHORS AT SPLICE JOINTS EXCEPT OMIT AT "B" ANCHOR LOCATION. SPACE "B" ANCHORS AT APPROXIMATELY 45" MAX. BETWEEN END ANCHORS.



APPROVED: PUBLIC WORKS DIRECTOR  
*James W. Rodkey, Jr.* DATE *9/7/00*  
 JAMES W. RODKEY, JR.  
 APPROVED: CITY ENGINEER  
*Robert K. Holt* DATE *8/31/00*  
 ROBERT K. HOLT, P.E.

CITY OF  
**BLYTHE**  
 DETAIL OF CATCH BASIN OPENING  
 & INSTALLATION DETAILS  
 SHEET 1 OF 2  
 STANDARD DRAWING NO. SD-509

REVISION	BY	DATE

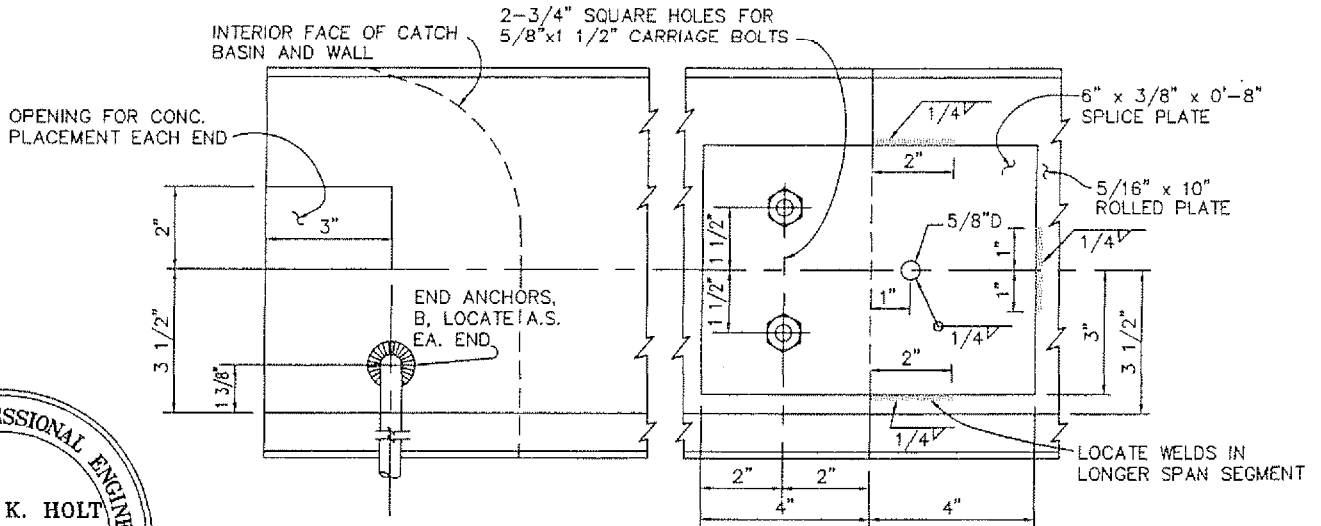


1. MATERIAL SHALL BE CAST STEEL.
2. STIRRUPS SHALL BE GALVANIZED.
3. FOR INSTALLATION DETAIL, SEE STD. DWG. SD-509

**ADJUSTABLE PROTECTION BAR STIRRUP**

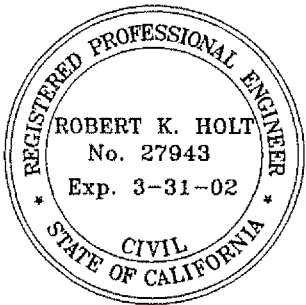
**NOTES:**

1. SUPPORT BOLT ANGLE "∞" SHALL VARY TO CONFORM WITH BATTER OF ADJOINING CURB.
2. SUPPORT BOLTS SHALL BE EQUAL IN LENGTH TO CURB FACE + 4"± FOR ALL CURB BATTERS.
3. ALL EXPOSED METAL PARTS SHALL BE GALVANIZED AFTER FABRICATION.
4. PROTECTION BAR SPACING: PROTECTION BAR(S) SHALL BE INSTALLED WHEN THE MINIMUM CLEAR OPENING OF THE CATCH BASIN EXCEEDS 6" BARS(S) AND SHALL BE PLACED SUCH THAT NO MINIMUM CLEAR OPENING EXCEEDS 6".
  - (A) WHEN ONE BAR IS REQUIRED, "S" SHALL BE 6 3/4", HOWEVER, THIS SHALL BE REDUCED IF NECESSARY SO THAT THE CENTER OF THE PROTECTION BAR IS NOT LESS THAN 2 1/2" FROM THE ROLLED PLATE.
  - (B) WHEN TWO OR MORE BARS ARE REQUIRED, "S" SHALL BE 6 3/4" WITH REMAINING BARS SPACED AT 6 3/4" O.C. THE SPACING OF THE TOP BAR SHALL BE REDUCED IF NECESSARY SO THAT THE CENTER OF THE BAR IS NOT LESS THAN 2 1/2" FROM THE ROLLED PLATE.
5. WHERE CATCH BASINS ARE TO BE CONSTRUCTED ON CURVES, THE MAXIMUM CHORD LENGTH FOR FACE PLATE SHALL BE SUCH THAT THE MAXIMUM DIMENSION FROM SAID CHORD (MEASURED PERPENDICULAR THERETO) TO THE TRUE CURVE WILL NOT EXCEED ONE INCH. WHERE MORE THAN ONE CHORD IS REQUIRED, CHORD LENGTH SHALL BE EQUAL.
6. WHERE LENGTH OF FACE PLATE IS BETWEEN 22' AND 43', TWO SECTIONS MAY BE USED. WHEN LENGTH EXCEEDS 43', THREE SECTIONS MAY BE USED. SECTIONS SHALL BE SPLICED ACCORDING TO THE SPLICE DETAIL. SPLICES SHALL BE PLACED ONE FOOT FROM SUPPORT BOLT.
7. LENGTH OF FACE PLATE IS W + 12" FOR ALL CATCH BASINS.
8. CATCH BASIN OPENING = NORMAL CURB FACE + 1 1/2" INCHES UNLESS OTHERWISE SPECIFIED.
9. SPACING OF ALL ANCHORAGE:
  - A. SET END ANCHORS 3" FROM ENDS OF FACE PLATE.
  - B. PLACE ONE "A" ANCHOR AT EACH SIDE OF ANY AND ALL SPLICE JOINTS AND WITHIN 6" THEREOF.



**FACE PLATE END & SPLICE DETAILS**

NOTE: SEE STD. DWG. SD-509 TOP ALTERNATE ANCHORAGE DETAIL FOR ADDITIONAL SPLICE DETAILS.



APPROVED: PUBLIC WORKS DIRECTOR

*James W. Rodkey, Jr.* DATE *9/7/00*  
 JAMES W. RODKEY, JR.

APPROVED: CITY ENGINEER  
*Robert K. Holt* DATE *8/31/00*  
 ROBERT K. HOLT, P.E.

CITY OF  
**BLYTHE**

DETAIL OF CATCH BASIN OPENING  
 & INSTALLATION DETAILS

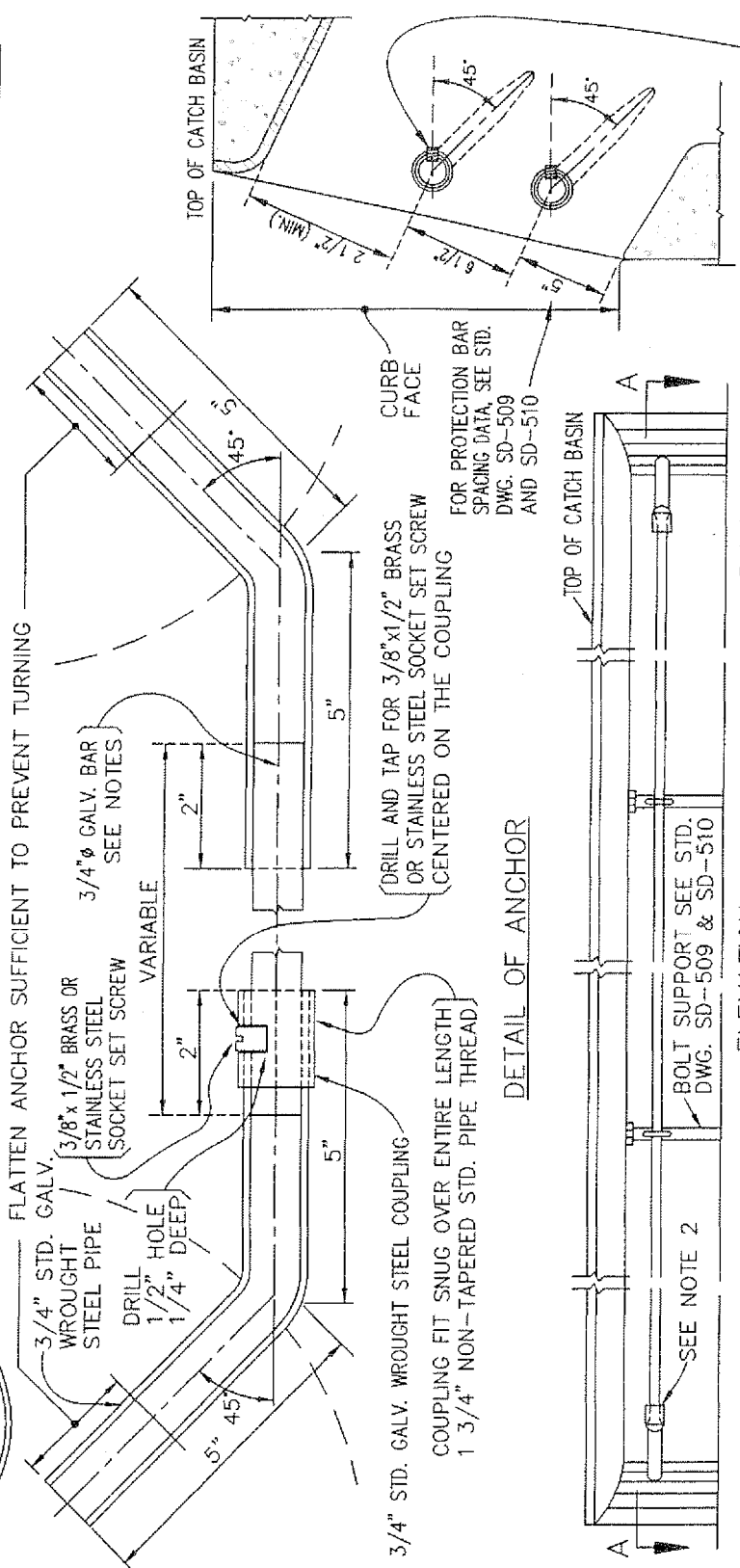
SHEET 2 OF 2

STANDARD DRAWING NO. SD-510

REVISION

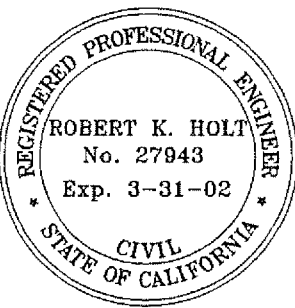
BY DATE

"W" (INCL)	NUMBER OF SUPPORT BOLTS	NUMBER OF "X" LENGTHS
5' to 10'	1	2
10' to 15'	2	3
15' to 20'	3	4
20' to 25'	4	5
25' to 30'	5	6



NOTE: BRASS OR STAINLESS STEEL SOCKET SET SCREW ON INSIDE OF CATCH BASIN

SECTION SHOWING LOCATION OF ANCHOR AT WALL OF CATCH BASIN



FLATTEN ANCHOR SUFFICIENT TO PREVENT TURNING

3/4" STD. GALV. WROUGHT STEEL PIPE

3/8" x 1/2" BRASS OR STAINLESS STEEL SOCKET SET SCREW

DRILL 1/2" HOLE 1/4" DEEP

VARIABLE

2"

5"

45°

3/4" STD. GALV. WROUGHT STEEL COUPLING

COUPLING FIT SNUG OVER ENTIRE LENGTH 1 3/4" NON-TAPERED STD. PIPE THREAD

DRILL AND TAP FOR 3/8" x 1/2" BRASS OR STAINLESS STEEL SOCKET SET SCREW CENTERED ON THE COUPLING

FOR PROTECTION BAR SPACING DATA, SEE STD. DWG. SD-509 AND SD-510

CURB FACE

TOP OF CATCH BASIN

DETAIL OF ANCHOR

ELEVATION

SECTION A-A

SEE NOTES

- NOTES:
1. ALL BARS SHALL BE 3/4" GALV. HOT-ROLLED STEEL PER A.S.T.M. DESIGNATION A-36. BAR LENGTHS SHALL NOT EXCEED 21' AND SHALL BE CUT TO FIT IN THE FIELD. WHEN "W" IS OVER 21', PROTECTION BAR SHALL CONSIST OF TWO OR MORE SECTIONS DEPENDING UPON LENGTH OF BASIN. LOCATION OF SPECIAL SUPPORT BARS AND ADDITIONAL SOCKET SET SCREW TO BE DETERMINED BY THE ENGINEER IN THE FIELD.
  2. INSTALL COUPLING AT DOWNSTREAM END OF CATCH BASIN OPENING.

APPROVED: PUBLIC WORKS DIRECTOR  
 JAMES W. RODKEY, JR. DATE 9/7/00

APPROVED: CITY ENGINEER  
 ROBERT K. HOLT DATE 8/31/00

ROBERT K. HOLT, P.E.

CITY OF BLYTHE

REMOVABLE PROTECTION BAR FOR CATCH BASINS

REVISION BY DATE