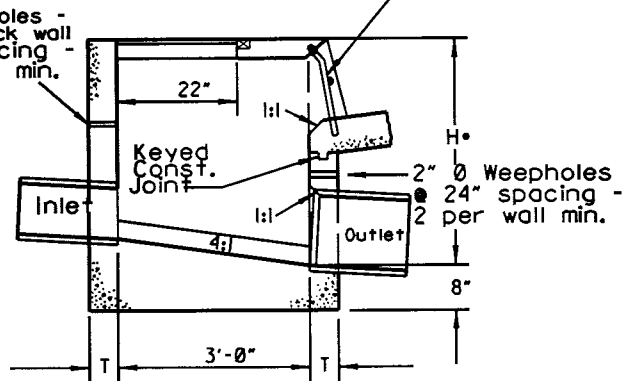
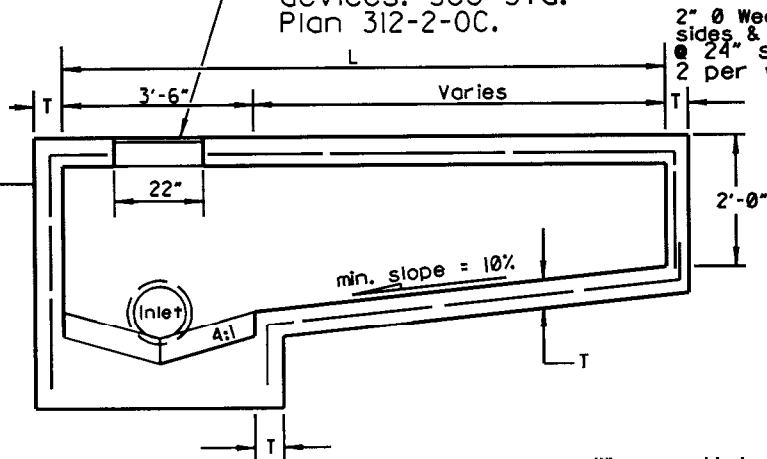


PLAN

SECTION D - D

Alhambra Foundry A-1531-B,
Apex Steel Corp. X110B or
equal with approved locking
devices. See Std.
Plan 312-2-0C.

See Std. Plan
1306 for Curb
Support details.



SECTION A - A

SECTION B - B

•When outlet pipe is constructed within roadway, a minimum of 30" (County Ord. No. 63.0322, 1961) or the roadway structural section thickness plus 6", whichever is greater, shall be maintained between the top of pipe and the roadway surface.

NOTES:

1. Standard opening lengths, "L" are 7', 10', 14' and 21'. Other lengths may be used, but not to exceed 21'.
2. All reinforcing is #4 @ 12" O.C. for H < 8' and #5 @ 12" O.C. for H ≥ 8' unless otherwise specified.
3. Curb opening shall conform to curb alignment.
4. See Std. Plans 1306 and 1307 for details and notes.
5. See Std. Plan 1308 for Local Depression details.
6. All steel shall be 2" clear from interior concrete surfaces.
7. T=6" for H=5'-0" to < 8'-0". T=8" for H=8'-0" to 20'-0".
8. The following shall be stencilled using 2 inch high letters and black point on the face of the curb adjacent to the inlet (either side) and on the top of the inlet:

NO DUMPING
DRAINS TO OCEAN
9. Deck, including steel reinforcement, shall be constructed the same width as sidewalk (up to 6' wide).

ORANGE COUNTY RESOURCES & DEVELOPMENT MANAGEMENT DEPARTMENT

STD. PLAN

Approved

H. I. Nakasone
H. I. Nakasone, Chief Engineer

Adopted: Res. 77-92

Revised: Res. 78-791; 82-718; 86-1141; 91-1481; 96-546; 06-010

1302

INLET TYPE II

SHT. 1 OF 1