

**NOTES**

1. DESIGNATION:  
CATCH BASIN NO. 9 WITH LOCAL DEPRESSION NO. 4.  
CASE A UNLESS OTHERWISE NOTED ON THE GENERAL PLAN
2. CONNECTOR PIPES:  
PIPE MAY BE ON ANY ALIGNMENT AROUND THE WALLS OF THE MAIN BASIN CHAMBER AS SHOWN ON THE GENERAL PLAN. PIPE SHALL BE TRIMMED TO THE FINAL SHAPE AND LENGTH BEFORE THE PLACEMENT OF CONCRETE.
3. CONCRETE: DESIGN, FC=3000 psi COMPRESSIVE STRENGTH AT 28 DAYS. FLOOR OF THE BASIN SHALL SLOPE FROM ALL WALLS TO THE OUTLET AND SHALL BE GIVEN A STEEL-TROWELED FINISH SURFACE. STREET-SIDE WALLS OF THE BASIN SHALL BE POURED TO THE ELEVATION OF THE ADJACENT LOCAL DEPRESSION OR STREET SURFACE. CURVATURE OF THE SILL AND SIDE WALLS AT THE GUTTER OPENING SHALL BE FORMED BY CURVED FORMS; AND ALL EXPOSED EDGES, OR CORNERS, AND CONCRETE TO METAL FRAME EDGES SHALL BE GIVEN 1/4" RADIUS ENGER FINISH. SURFACE OF ALL EXPOSED CONCRETE SHALL CONFORM TO SLOPE, GRADE, COLOR, AND FINISH TO THE EXISTING, OR PROPOSED, CURB AND WALK ADJACENT TO THE BASIN.
4. REINFORCEMENT: (STANDARD DRAWING NO. 2-0171)  
TOP SLAB-AS REQUIRED ON THE STRUCTURAL PLAN, WALLS AND FLOOR-AS REQUIRED BY STANDARD DRAWING NO. 2-0172, SECTION 2.
5. DIMENSIONS: CURB FACE AT THE CATCH BASIN OPENING SHALL BE AS REQUIRED BY STD. DWGS. NO. 2-0415 OR AS SHOWN ON THE GENERAL PLAN.  
M=7', b=20", V=4'-6", UNLESS OTHERWISE SHOWN ON THE GENERAL PLAN.

U	Z	V (MIN.)	L
7	24"	4'-6"	6"
10	24"	4'-6"	6"
14	30"	4'-9"	6"
21	36"	5'-0" (OR MORE)	6"

6. STEPS: (STANDARD DRAWING NO. 2-096)  
PLACE STEPS AT 12-INCH INTERVALS FROM THE FLOOR OF THE BASIN WITH THE TOP STEP AT 12 INCHES (MINIMUM) BELOW THE STREET SURFACE. CONSTRUCT STEPS ON FRONT WALL WHEN CONNECTOR PIPE IS ALIGNED TO END WALL.

**LOS ANGELES COUNTY  
FLOOD CONTROL DISTRICT  
CATCH BASIN NO. 9  
PLAN, SECTIONS AND DETAIL**

RECOMMENDED BY: *Shirley A. [Signature]* APPROVAL RECOMMENDED BY: *[Signature]*

DESIGNED BY: *[Signature]* CHECKED BY: *[Signature]*

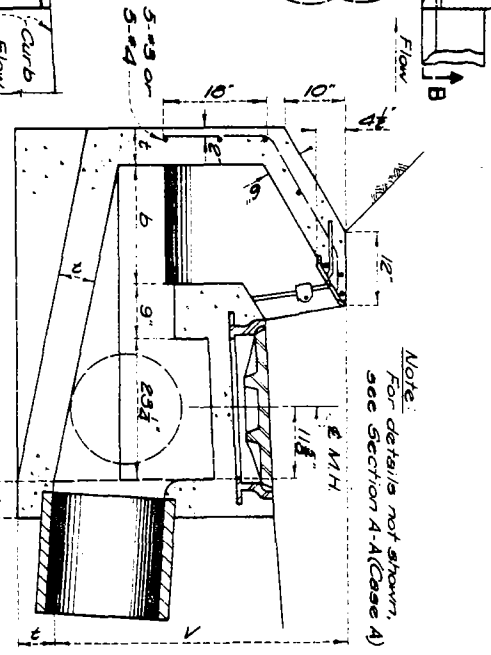
DATE: 12-1-73 DWG. NO. 2-D-471

SCALE: NONE SHEET 1 OF 1

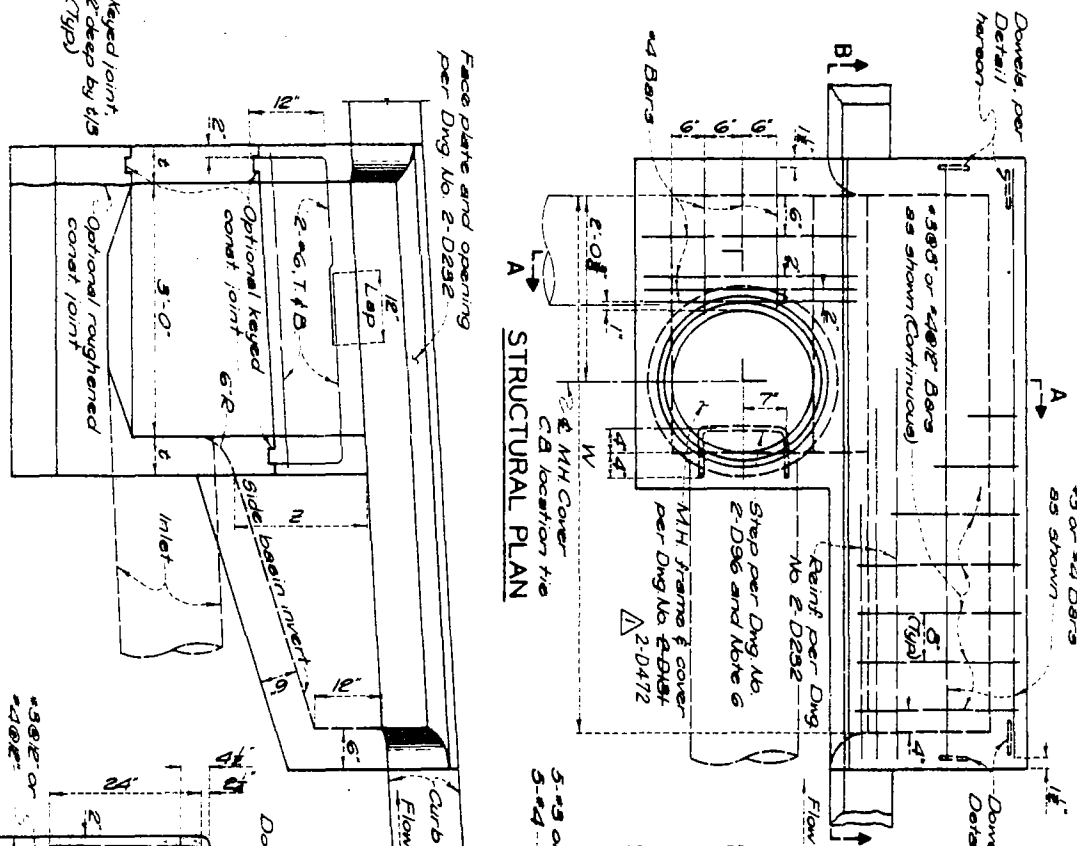
APPROVED BY: *[Signature]* CIVIL ENGINEER NO. 8128

1/1/73

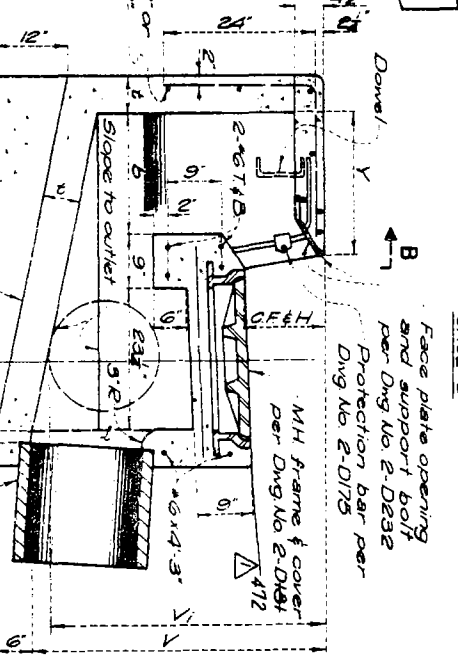
**DETAIL OF DOWEL**



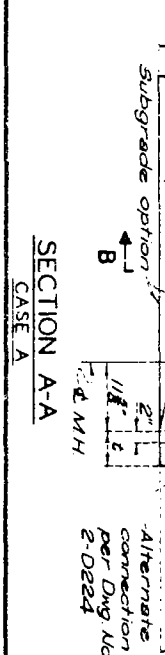
**STRUCTURAL PLAN**



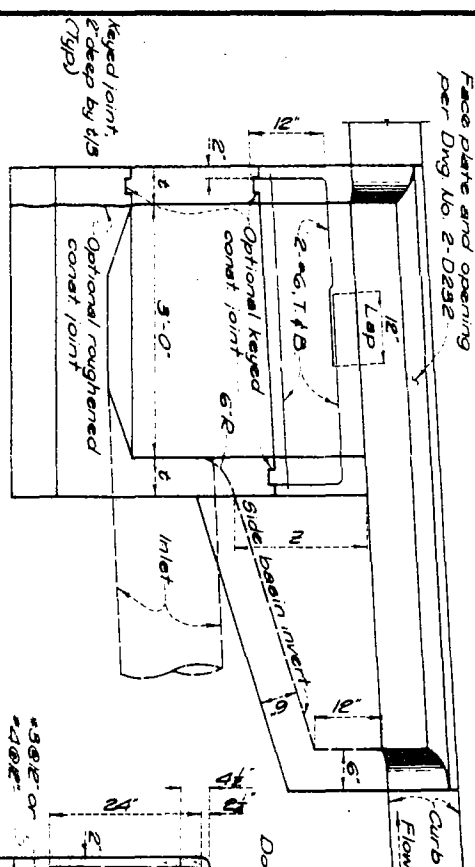
**SECTION A-A  
CASE B**



**SECTION A-A  
CASE A**



**SECTION B-B**



DATE	REVISIONS
3-1-74	Monhole Std

CHECKED BY: *[Signature]*

DESIGNED BY: *[Signature]*

APPROVED BY: *[Signature]*

DATE: 12-1-73

DWG. NO. 2-D-471

SHEET 1 OF 1