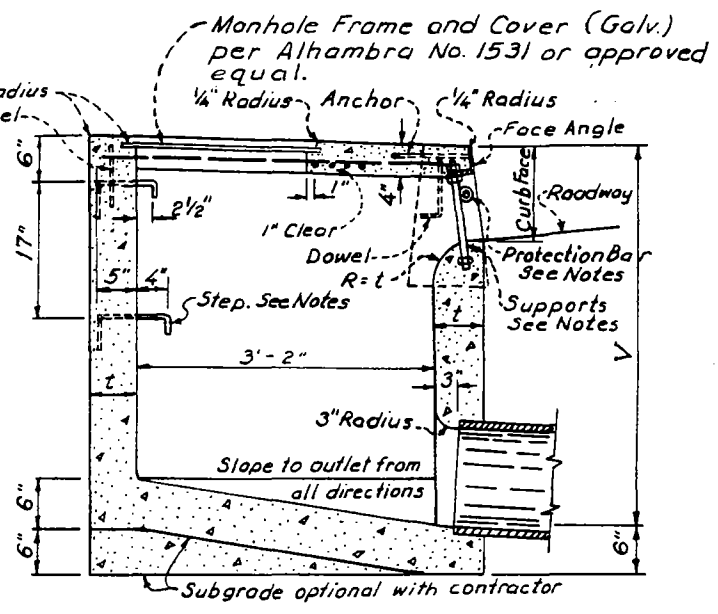


PLAN

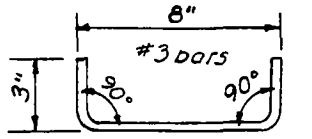


SECTION A-A

NOTES

- Connection pipes and outlet pipe may be placed in any position around the walls.
- Curvature of the lip and side walls at gutter opening shall be formed by curved forms.
- Dimensions: $t = 6"$ if V is $4'-0"$ or less
 $t = 8"$ if V is between $4'-0"$ and $8'-0"$
 $t = 10"$ if V is $8'-0"$ or more
 $V = 4'-0"$ unless otherwise noted.
- Floor of basin shall be troweled to a hard, smooth surface and shall slope from all directions to the outlet.
- Manhole shall be placed along back wall near outlet.
- Outlet pipe shall be trimmed to the final shape and length before concrete is poured
- Protection bar: Where the curb face is greater than $10"$, install protection bar as shown on Dwg. No. 411
- Steps: If V is $3'-6"$ or less, none required
 If V is $3'-6"$ to $4'-0"$, place one step $12"$ above floor
 If V is more than $4'-0"$ place steps $17"$ apart, with top step $6"$ below top of cover slab.
- Surface of all exposed concrete shall conform in slope, grade, color, finish, and scoring to existing or proposed curb and sidewalk adjacent to the basin.
- Wall & floor steel reinforcing see Dwg. No. 40B
- Curb face at catch basin openings shall be that of the existing curb plus $4"$ except as otherwise shown.
- Supports per Dwg. No. 410

STEEL LIST DESCRIPTION	REQ'D
#3 Bars, 7'-10" long	3
#3 Bars, 3'-11" long	14
#3 Bars, 3'-2" long	2
#3 Bars, 2'-11" long	6
#3 Bars, 1'-7" long	3
Face Angle, 8'-0" long	1
Steps, 3/4" Plain, round, galvanized	See Note
Dowels See Detail	4
Frame and Cover Set	1
Protection Bar	See Note
Wall & floor steel reinforcing	See Note
Galvanized Support	1



DETAIL OF DOWEL

No.	REVISION	APPROVED	DATE
3	Revised Note	[Signature]	7-10-71
Rev. 2	Revised Notes	[Signature]	11-4-79
Rev. 1	Revised Standard No.	[Signature]	8-16-78

CITY OF SAN BERNARDINO - PUB. WKS. DEPT.
CATCH BASIN NO. 2

APPROVED
 E-4 1972
 [Signature]
 CITY ENGINEER

STANDARD NO. 404