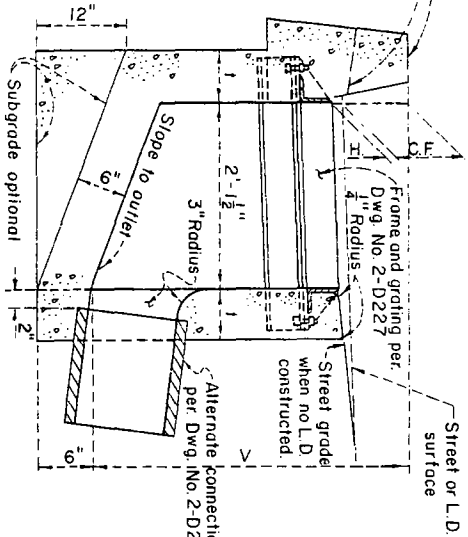
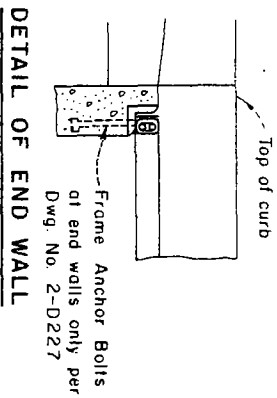


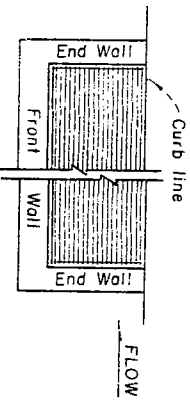
STRUCTURAL PLAN



SECTION A-A



DETAIL OF END WALL



BASIN AND GRATING ALIGNMENT PLAN

Exist. standard or depressed driveway curb

Street or L.D. surface

NOTES

1. **GRATING:** One grating required unless otherwise shown on general plan. Position gratings as required by Std. Dwg. No. 2-D248.
2. **CONNECTOR PIPE:** Locate at downstream end of basin unless specifically noted otherwise. Pipe shall be trimmed to the final shape and length before the placement of concrete.
3. **CONCRETE:** Design $f_c = 3000 \text{ psi}$ at 28 days. Floor of basin shall slope from all walls to the outlet and shall be given a steel-troweled finish. Street-side walls of the basin shall be poured to the elevation of the L.D. or adjacent street surface. Curb wall of the basin and curb shall be poured monolithically, and the curb surface shall conform in slope, grade, color, and finish to the adjacent curbing.
4. **REINFORCEMENT:** As required by Std. Dwg. Nos. 2-D171 and 2-D172.
5. **DIMENSIONS:**
 $V = 3'-6"$ unless otherwise shown.
 $W = 2'-11\frac{3}{8}"$ for one grating; add $3'-5\frac{3}{8}"$ for each additional grating.
 $t = 6$ inches if V is $4'-0"$ or less.
 $t = 8$ inches if V is $4'-0"$ to $8'-0"$.
 $t = 10$ inches if V is $8'-0"$ or more.
 $H = 0$ inches at depressed driveway curb or when no L.D. is constructed. See Std. Dwg. No. 2-D248.
6. **STEPS:** V to $3'-0"$ (incl.) place one step 12 inches above the floor of the basin.
 V over $3'-0"$ place steps at 12-inch intervals from floor of the basin to minimum of 12 inches below top of the grating.
 Construct steps on front wall when connector pipe is aligned to downstream end wall.

Supersedes drawing of the same number dated 12-28-38

LOS ANGELES COUNTY
FLOOD CONTROL DISTRICT
**CATCH BASIN NO. 4
PLAN, SECTION,
AND DETAILS**

| REVISIONS | |
|--------------------|---------|
| MARK | DATE |
| Δ | 8-28-70 |
| Added location 7-8 | |

| | |
|--------------|--------|
| DRAWN BY | ASH |
| CHECKED BY | D.W.H. |
| DESIGNED BY | G.J.P. |
| SUBMITTED BY | C.W.H. |

| | |
|--------------------------|------------------------------|
| RECOMMENDED BY | APPROVED BY |
| <i>C. E. Calhoun</i> | <i>W. J. ...</i> |
| DIVISION ENGINEER (SEAL) | SEAL CHIEF DIVISION ENGINEER |
| APPROVED BY | CHIEF ENGINEER |
| <i>Walter ...</i> | <i>...</i> |
| SCALE | DATE |
| NONE | 5-15-68 |
| SHEET | DWG. NO. 2-D101 |
| OF | 1 |