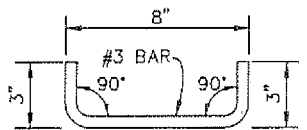


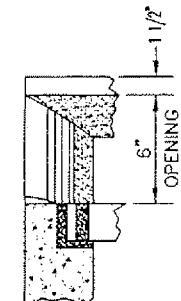
NOTE:

A DEBRIS BASIN EQUAL TO 36 CUBIC FEET OR GREATER MAY BE REQUIRED TO BE CONSTRUCTED IN THE BOTTOM OF THIS STRUCTURE, OR AN ADJACENT MANHOLE, FOR SAND/TRASH SEPARATION.

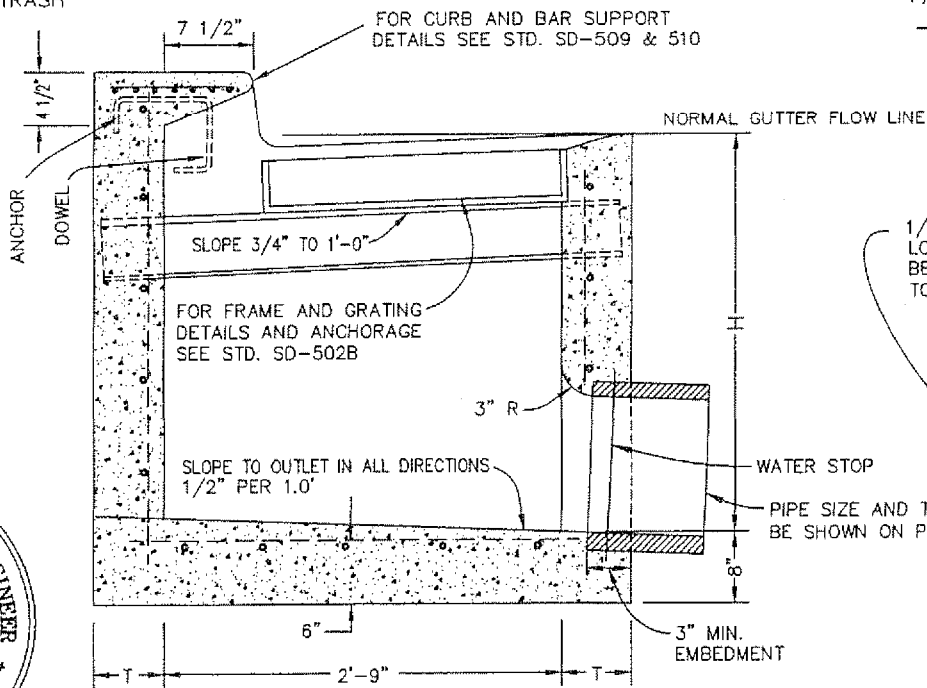
PLAN



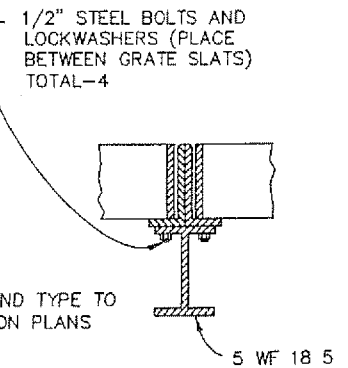
DETAIL OF DOWEL



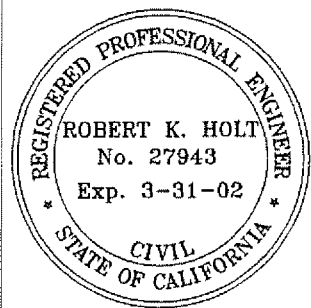
DETAIL OF END WALL



SECTION A-A



SECTION B-B



APPROVED: PUBLIC WORKS DIRECTOR
James W. Rodkey, Jr. DATE *9/7/00*
 JAMES W. RODKEY, JR.
 APPROVED: CITY ENGINEER
Robert K. Holt DATE *9/7/00*
 ROBERT K. HOLT, P.E.

CITY OF BLYTHE

CURB INLET WITH GUTTER GRATE CATCH BASIN

STANDARD DRAWING NO. SD-502

REVISION	BY	DATE

BASIN SHALL HAVE TWO GRATES MINIMUM, UNLESS OTHERWISE SPECIFIED ON IMPROVEMENT PLANS.

WHEN THE BASIN IS TO BE CONSTRUCTED WITHIN THE LIMITS OF A PROPOSED SIDEWALK OR IS CONTIGUOUS TO SUCH A SIDEWALK. CONCRETE SHALL BE CLASS "3" CONCRETE WHICH SHALL ATTAIN A 28-DAY COMPRESSIVE STRENGTH OF 4000 PSI IN ACCORDANCE WITH ASTM C39/C39M-99. THE TOP OF THE BASIN SHALL BE POURED MONOLITHIC WITH SIDEWALK, USING CLASS "3" CONCRETE IN THE SIDEWALK. THE TOP OF THE CATCH BASIN SHALL BE FINISHED PER SIDEWALK STANDARDS.

CONNECTION PIPES MAY BE PLACED IN ANY POSITION AROUND THE WALLS, PROVIDED THAT THEY POINT IN THE PROPER DIRECTION AND THE POSITION IS OTHERWISE CONSISTENT WITH THE IMPROVEMENT PLANS.

DIMENSIONS:

GRATE SHALL BE PARALLEL TO PLANE OF GUTTER SLOPE 3/4" TO 1'-0".

T = 6 INCHES IF H IS 3.5 FEET OR LESS.

T = 8 INCHES IF H IS GREATER THAN 3.5 FEET AND LESS THAN 8 FEET.

T = 10 INCHES IF H IS 8 FEET OR GREATER.

H = SHALL BE SHOWN ON THE PLANS.

W = 6 FEET 4 3/4 INCHES MINIMUM. ADD 3 FEET 5 3/8 INCHES FOR EACH ADDITIONAL GRATING.

THE SURFACE OF ALL EXPOSED CONCRETE SHALL CONFORM TO SLOPE, GRADE, COLOR, FINISH, AND SCORING IN EXISTING OR PROPOSED IMPROVEMENTS ADJACENT TO THE BASIN. WHERE NO SIDEWALK EXISTS, THE TOP SHALL BE FINISHED TO CONFORM TO STANDARD SIDEWALK SLOPE AND FINISH. WHERE NO CURB EXISTS, THE BATTER OF EXPOSED END WALLS ABOVE THE STREET SURFACE SHALL CONFORM TO BATTER FOR STANDARD CURB. THE BASIN FLOOR SHALL BE GIVEN A SMOOTH TROWEL FINISH. CURVATURE OF THE LIP AND ENDWALLS AT THE GUTTER OPENING SHALL NOT BE MADE BY PLASTERING. THE OUTLET PIPE SHALL BE TRIMMED TO FINAL SHAPE AND LENGTH BEFORE THE CONCRETE IS POURED.

REINFORCING STEEL SHALL BE NO. 4 BARS DEFORMED BARS. CLEARANCE SHALL BE 1 1/2 INCH FROM INSIDE OF BOX. SEE STANDARD DRAWING SD-508 FOR WALL AND FLOOR STEEL REINFORCING.

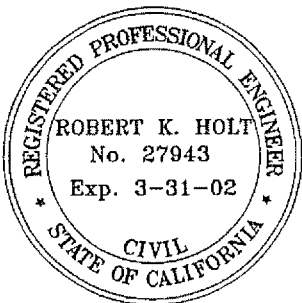
STEPS SHALL BE 3/4 INCH PLAIN ROUND GALVANIZED STEEL STEPS AS REQUIRED BY STANDARD DRAWING SD-506, AND SHALL BE INSTALLED AS FOLLOWS:

IF H IS 3.5 FEET OR LESS, NO STEPS ARE REQUIRED.

IF H IS MORE THAN 3.5 FEET, BUT NOT MORE THAN 5.0 FEET, INSTALL ONE STEP 16 INCHES ABOVE FLOOR OF BASIN.

IF H IS MORE THAN 5.0 FEET, INSTALL STEPS 12" APART, WITH THE TOP STEP 6 INCHES BELOW THE TOP OF THE GRATING.

ALL STEPS SHALL BE 4 INCHES CLEAR FROM THE WALL EXCEPT THE TOP STEP, WHICH SHALL BE 2 1/2 INCHES (CLEAR) FROM THE WALL AND ANCHORED NOT LESS THAN 4 INCHES IN WALL OF BASIN.



APPROVED: PUBLIC WORKS DIRECTOR

James W. Rodkey Jr. DATE *9/7/00*
 JAMES W. RODKEY, JR.

APPROVED: CITY ENGINEER
Robert K. Holt DATE *8/31/00*
 ROBERT K. HOLT, P.E.

REVISION	BY	DATE

CITY OF
BLYTHE

CURB INLET WITH GUTTER GRATE
 CATCH BASIN

STANDARD DRAWING NO. SD-502A