

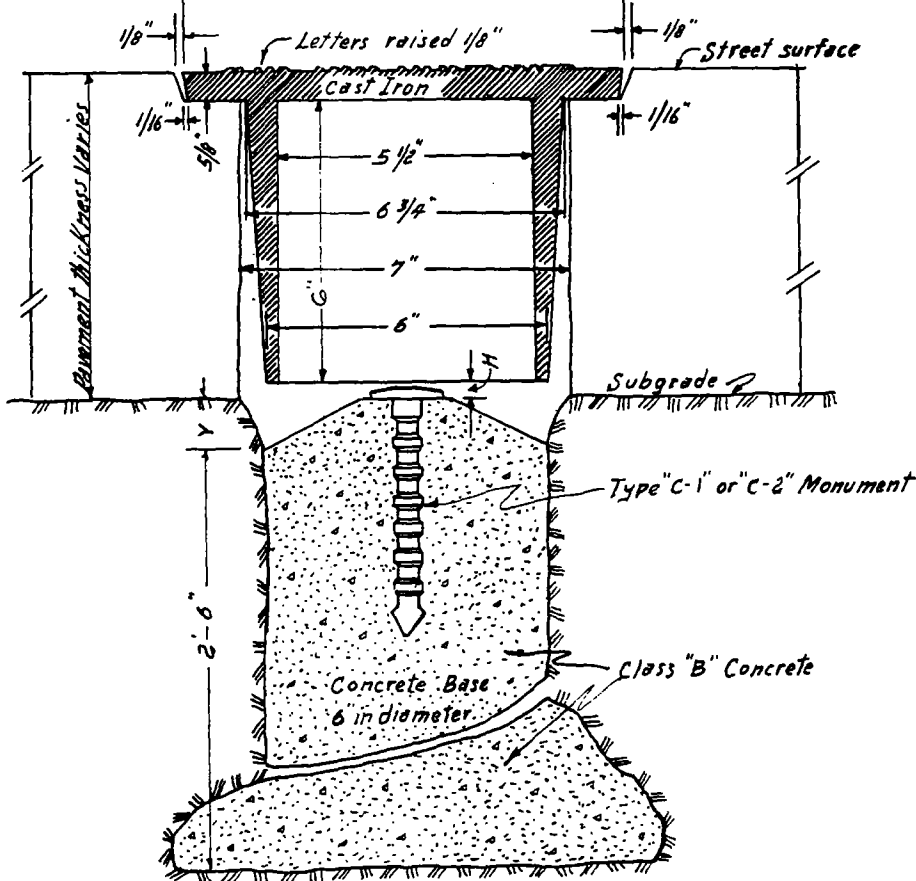
NOTES

Cast Iron cover shall be made in accordance with latest adopted specifications.

Lettering to be as shown and shall be cast in one piece with cover.

Two 3/8 inch diameter holes spaced as shown, to be clear and full width through full thickness of cover.

Castings to be cleaned and given a coal tar coating.



Values of H & Y		
Thickness of Pavement	H	Y
4 inches	1/2"	4"
5 "	1/2"	3"
6 "	1/2"	2"
7 "	1/2"	1"
8 "	1 1/2"	1"
9 "	2 1/2"	1"
10 "	3 1/2"	1"
11 "	4 1/2"	1"
12 "	5 1/2"	1"

SECTION A-A

CITY OF SAN BERNARDINO - PUBLIC WORKS DEPT.

TYPE - "A" - MONUMENT

REV. 1	Revised Standard No.	<i>Revised</i>
APPROVED	11-25-1966	STANDARD NO. 502
<i>P. Williams</i>	CITY ENGINEER	