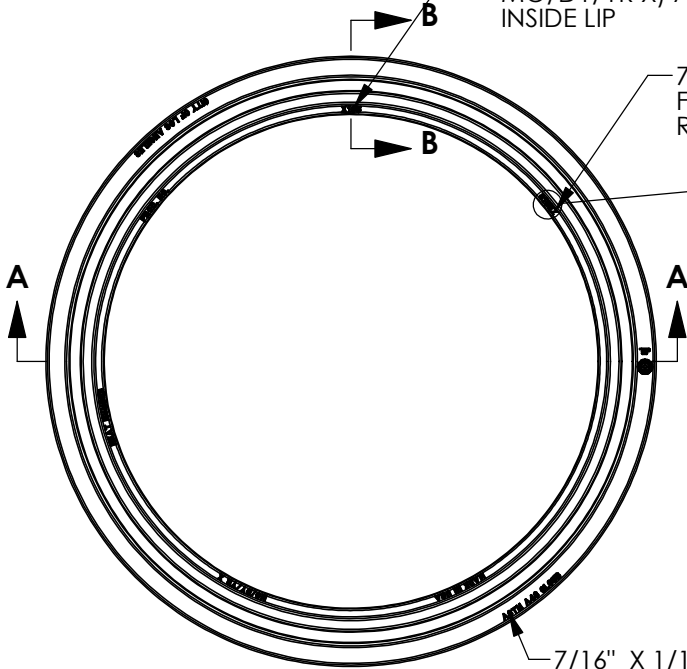


# 3165Z Frame

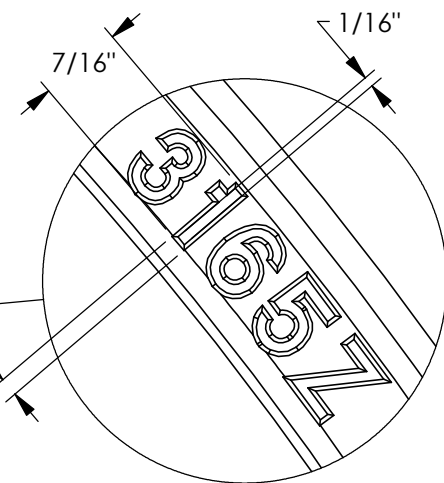


(PROD. NO., X165, 3165Z MANUF. MARK  
MADE IN USA, HEAT NUMBER, AND  
MO/DY/YR X) ALL EVENLY SPACED ON  
INSIDE LIP

7/16" X 1/16" LINE WIDTH  
FLAT FACE GOTHIC  
RAISED 1/16" DEEP LETTERING

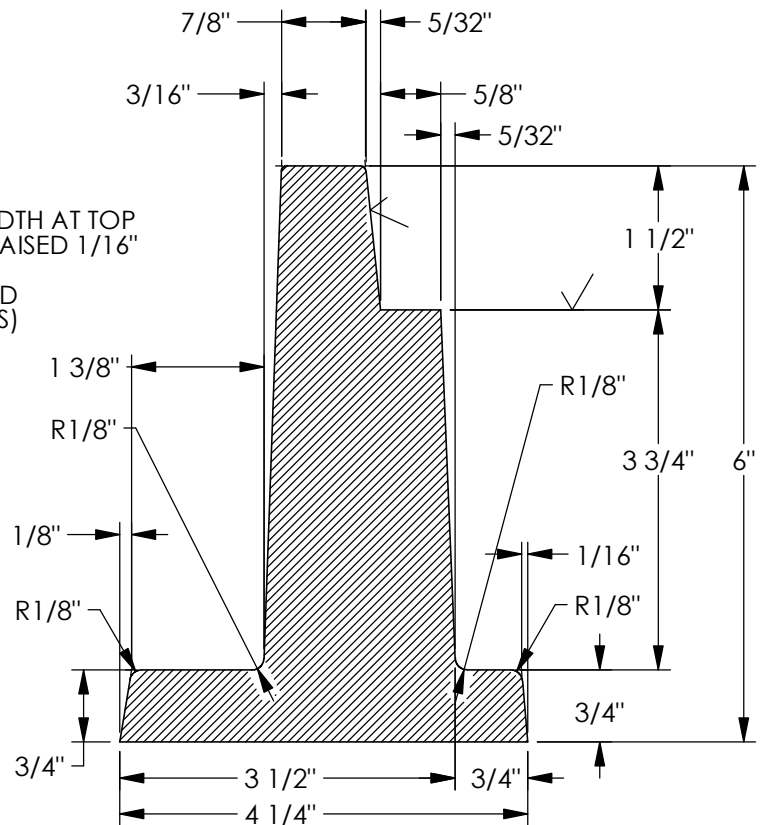


7/16" X 1/16" LINE WIDTH AT TOP  
FLAT FACE GOTHIC RAISED 1/16"  
DEEP LETTERING  
(ASTM A48 CL35B AND  
CITY OF LOS ANGELES)  
ON OUTER LIP

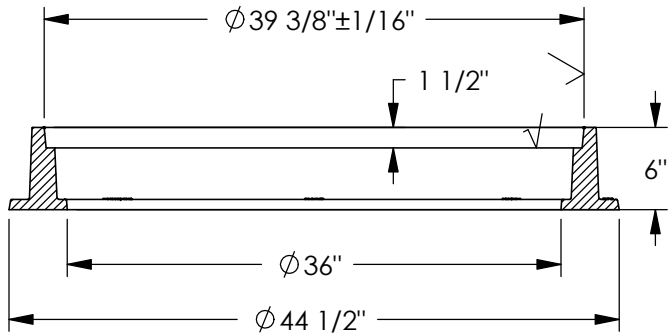


**DETAIL C**  
SCALE 1 : 1

3/32"



**SECTION B-B**  
SCALE 1 : 2



**SECTION A-A**

**Product Number**

00316510

**Design Features**

- Materials  
Gray Iron (CL35B)
- Design Load  
Heavy Duty  
Proof Load Tested to 53,200 LBS.
- Open Area  
n/a
- Coating  
Asphaltic Coated
- √ Designates Machined Surface

**Weight**

MIN. 360 LBS.  
MAX. 395 LBS.

**Certification**

- ASTM A48
- H20

-Country of Origin: USA

**Manufacturing Facility**

ARDMORE, OK., USA

Fabrication Inspection  
Required.

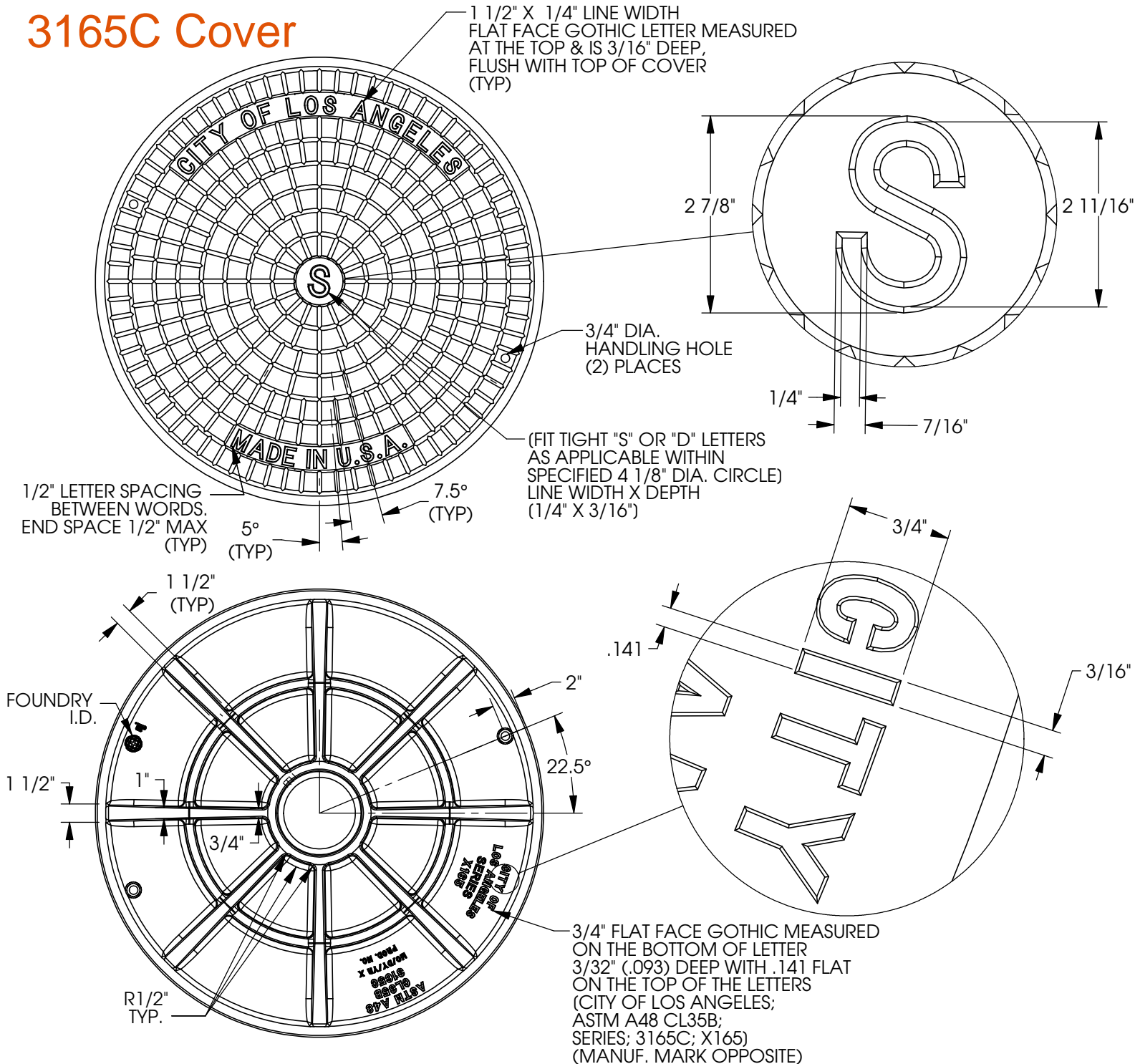
**Drawing Revision**

8/26/2011 Designer: SMM  
10/8/2015 Revised By: DAE

**Contact**

800 626 4653  
ejco.com

# 3165C Cover



**Product Number**

00316575

**Design Features**

- Materials  
Gray Iron (CL35B)
- Design Load  
Heavy Duty  
Proof Load Tested to 53,200 LBS.
- Open Area  
n/a
- Coating  
Asphaltic Coated
- √ Designates Machined Surface

**Weight**

MIN. 425 LBS.  
MAX. 470 LBS.

**Certification**

- ASTM A48
- 
- Country of Origin: USA

**Manufacturing Facility**

ARDMORE, OK., USA

Fabrication Inspection  
Required.

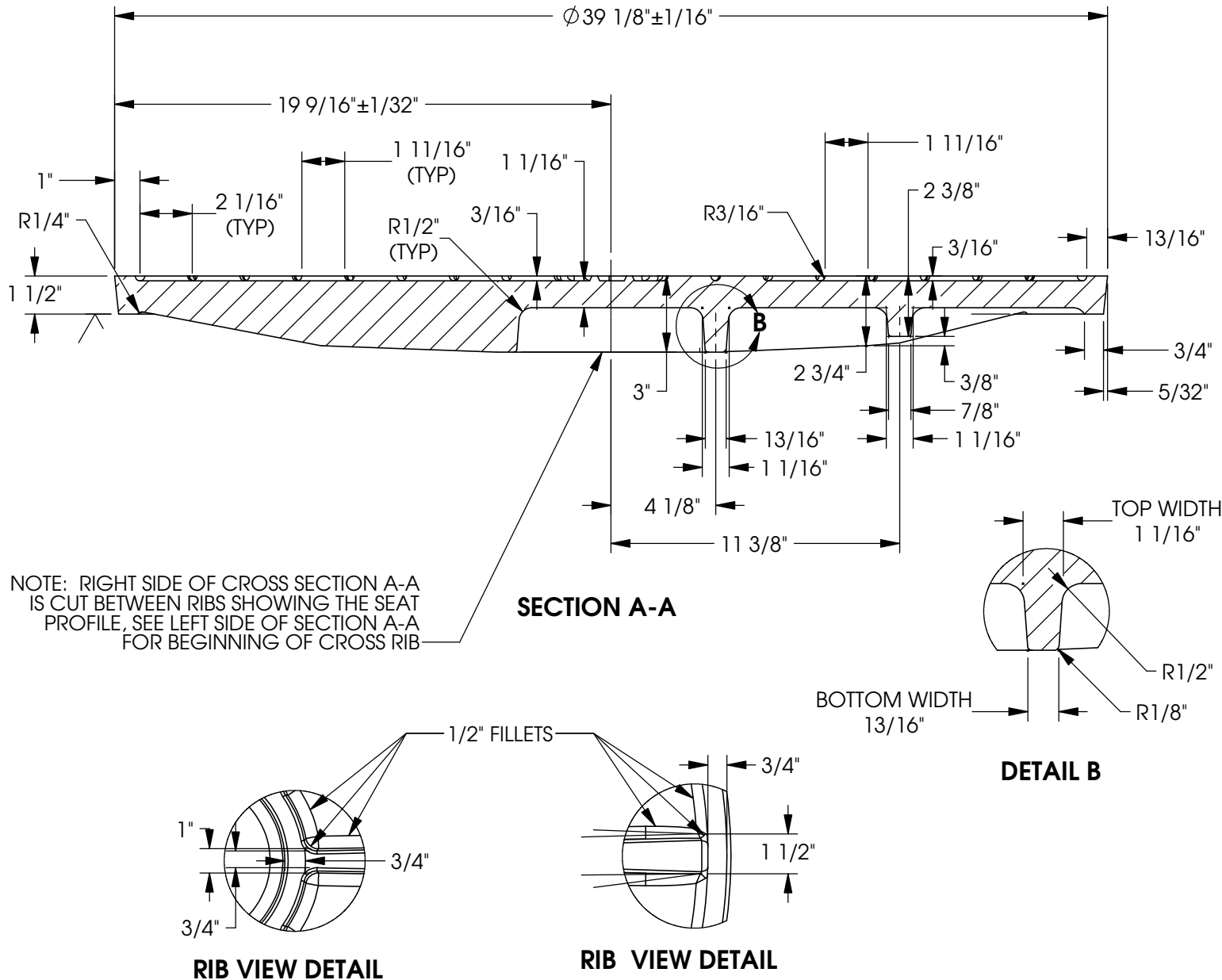
**Drawing Revision**

11/18/2011 Designer: SMM  
12/10/2013 Revised By: MAH

**Contact**

800 626 4653  
ejco.com

# 3165C Cover



## Product Number

00316575

## Design Features

- Materials  
Gray Iron (CL35B)
- Design Load  
Heavy Duty  
Proof Load Tested to 53,200 LBS.
- Open Area  
n/a
- Coating  
Asphaltic Coated
- √ Designates Machined Surface

## Weight

MIN. 425 LBS.  
MAX. 470 LBS.

## Certification

- ASTM A48
- 
- 
- Country of Origin: USA

## Manufacturing Facility

ARDMORE, OK., USA

Fabrication Inspection  
Required.

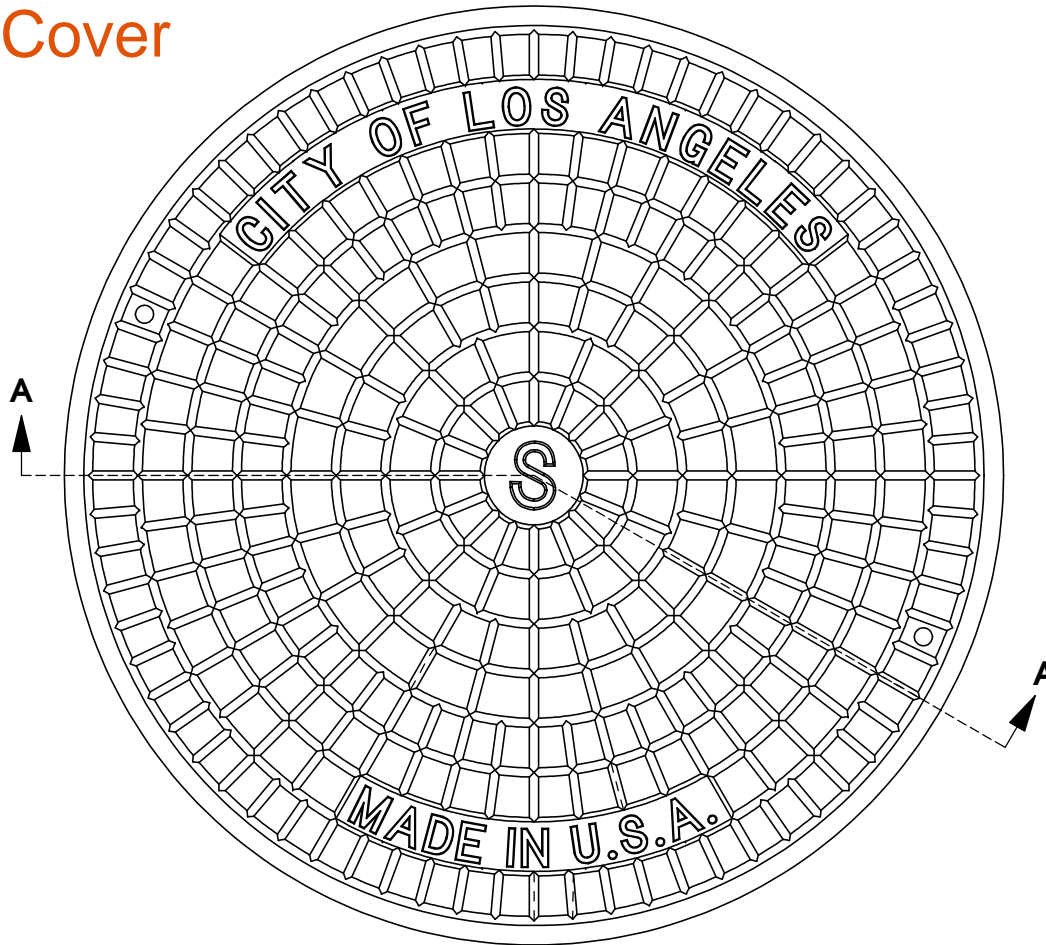
## Drawing Revision

11/18/2011 Designer: SMM  
12/10/2013 Revised By: MAH

## Contact

800 626 4653  
ejco.com

# 3165C Cover



## Product Number

00316575

## Design Features

- Materials  
Gray Iron (CL35B)
- Design Load  
Heavy Duty  
Proof Load Tested to 53,200 LBS.
- Open Area  
n/a
- Coating  
Asphaltic Coated
- √ Designates Machined Surface

## Weight

MIN. 425 LBS.  
MAX. 470 LBS.

## Certification

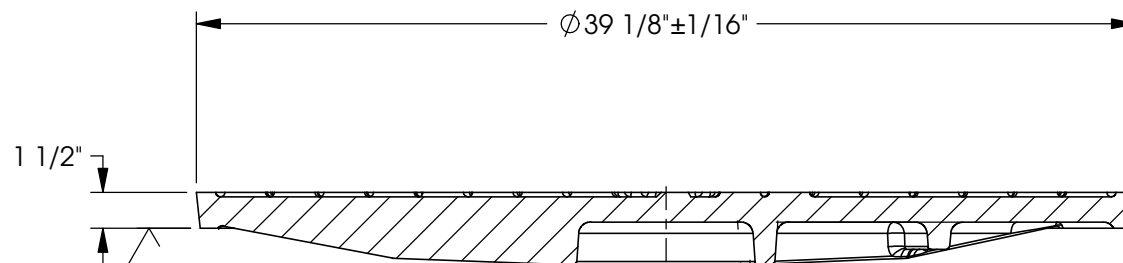
- ASTM A48
- 
- 
- Country of Origin: USA

## Manufacturing Facility

ARDMORE, OK., USA

Fabrication Inspection  
Required.

**SEE DETAIL VIEWS FOR ALL DIMENSIONS AND SPEC. INFORMATION**



**SECTION A-A**

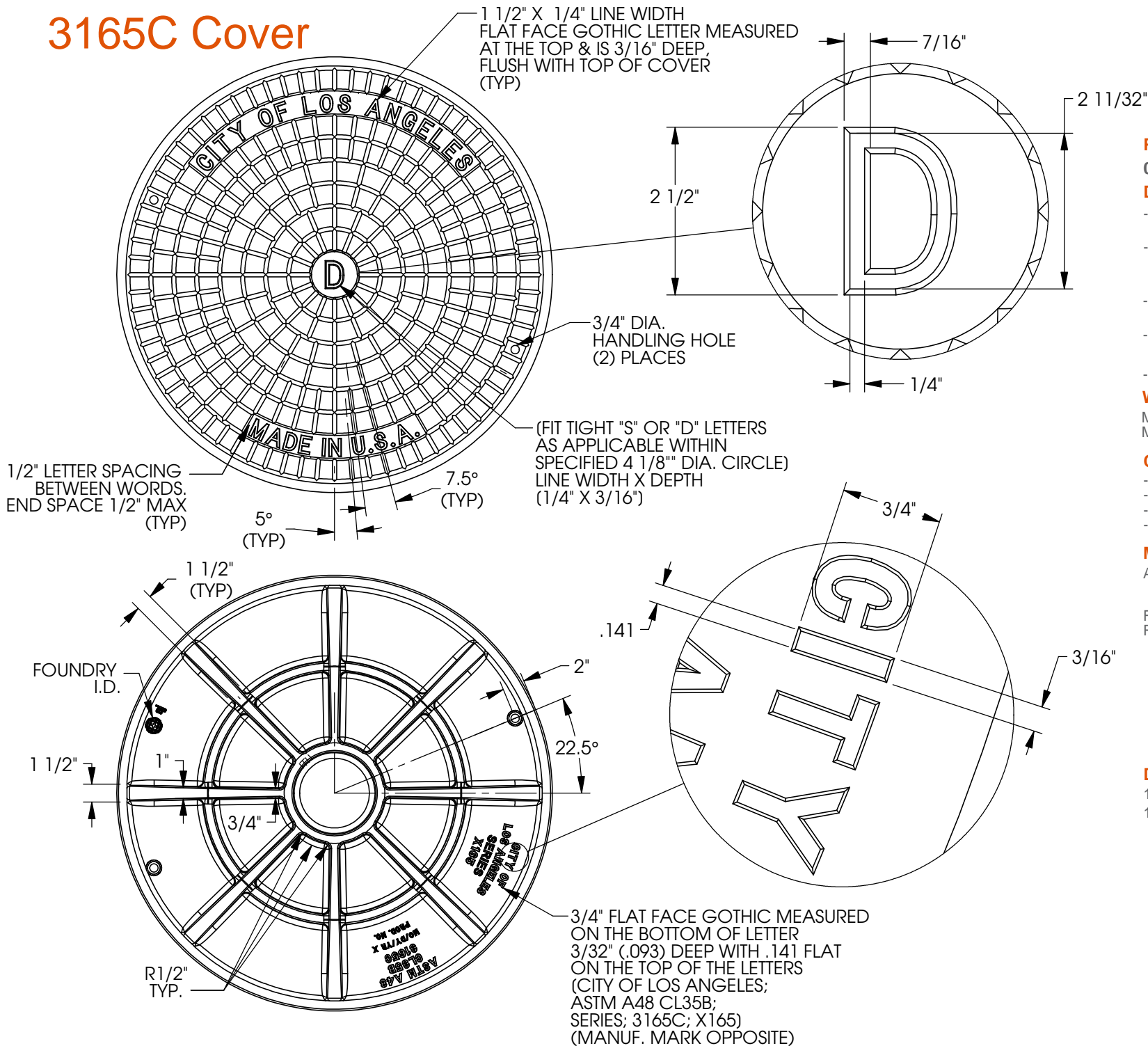
## Drawing Revision

11/18/2011 Designer: SMM  
12/10/2013 Revised By: MAH

## Contact

800 626 4653  
ejco.com

# 3165C Cover



## Product Number

00316576

## Design Features

- Materials  
Gray Iron (CL35B)
- Design Load  
Heavy Duty  
Proof Load Tested to 53,200 LBS.
- Open Area  
n/a
- Coating  
Asphaltic Coated
- √ Designates Machined Surface

## Weight

MIN. 425 LBS.  
MAX. 470 LBS.

## Certification

- ASTM A48
- 
- Country of Origin: USA

## Manufacturing Facility

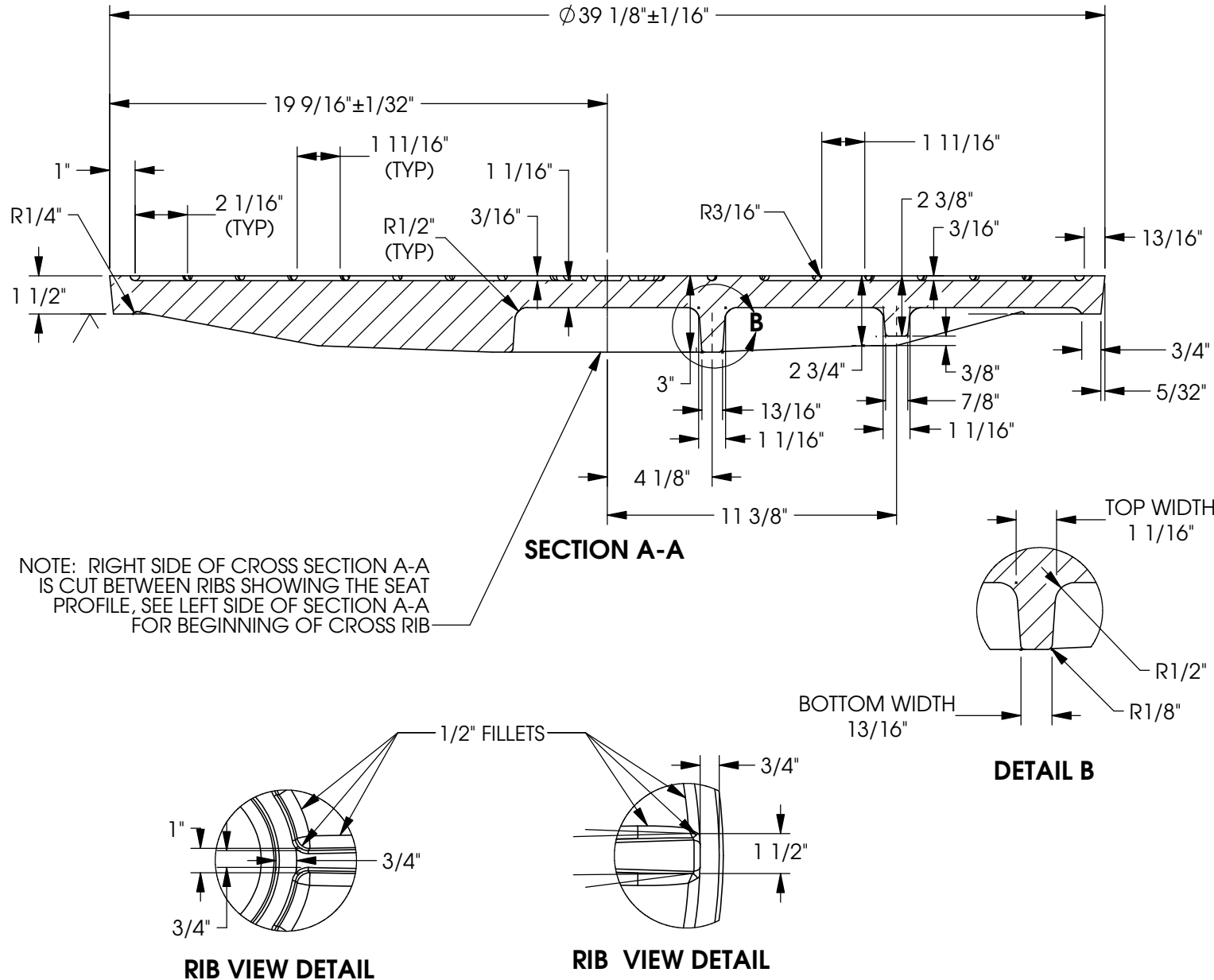
ARDMORE, OK., USA

Fabrication Inspection  
Required.

## Drawing Revision

11/18/2011 Designer: SMM  
12/10/2013 Revised By: MAH

# 3165C Cover



## Product Number

00316576

## Design Features

- Materials  
Gray Iron (CL35B)
- Design Load  
Heavy Duty  
Proof Load Tested to 53,200 LBS.
- Open Area  
n/a
- Coating  
Asphaltic Coated
- √ Designates Machined Surface

## Weight

MIN. 425 LBS.  
MAX. 470 LBS.

## Certification

- ASTM A48
- 
- 
- Country of Origin: USA

## Manufacturing Facility

ARDMORE, OK., USA

Fabrication Inspection  
Required.

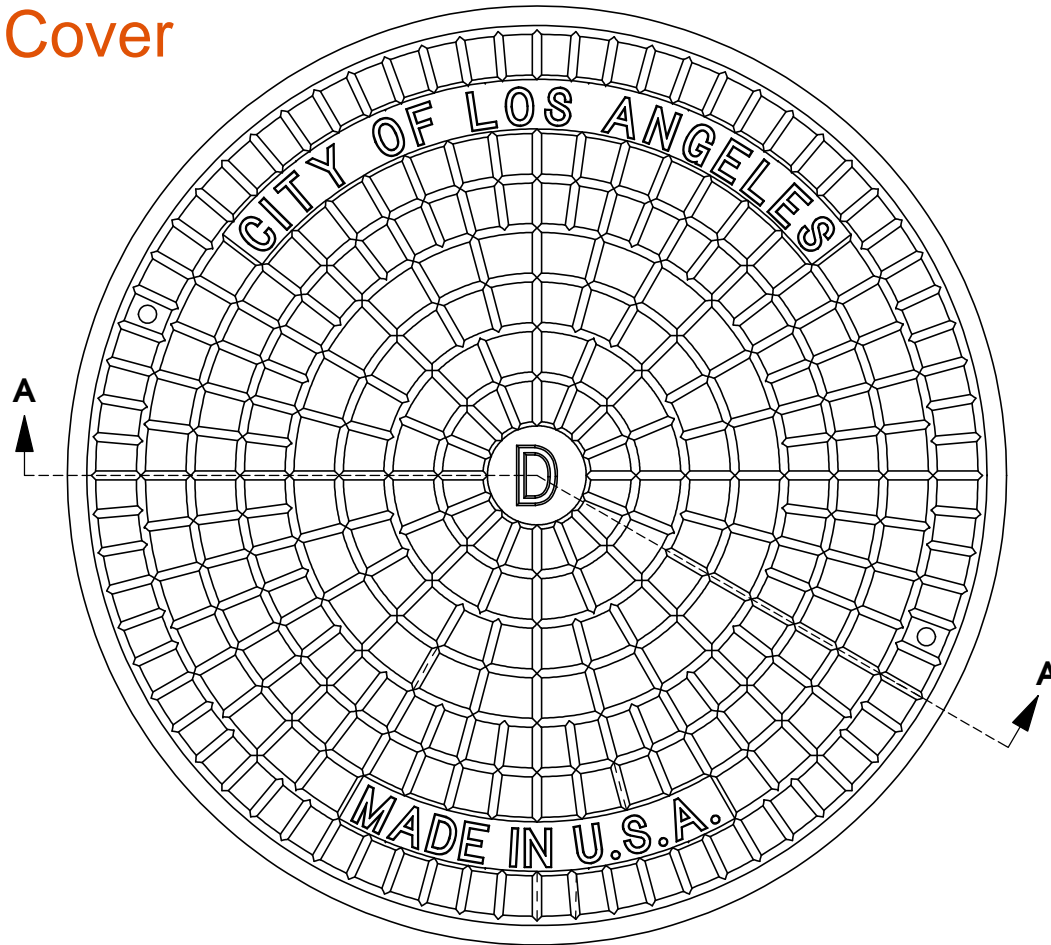
## Drawing Revision

11/18/2011 Designer: SMM  
12/10/2013 Revised By: MAH

## Contact

800 626 4653  
ejco.com

# 3165C Cover



## Product Number

00316576

## Design Features

- Materials  
Gray Iron (CL35B)
- Design Load  
Heavy Duty  
Proof Load Tested to 53,200 LBS.
- Open Area  
n/a
- Coating  
Asphaltic Coated
- √ Designates Machined Surface

## Weight

MIN. 425 LBS.  
MAX. 470 LBS.

## Certification

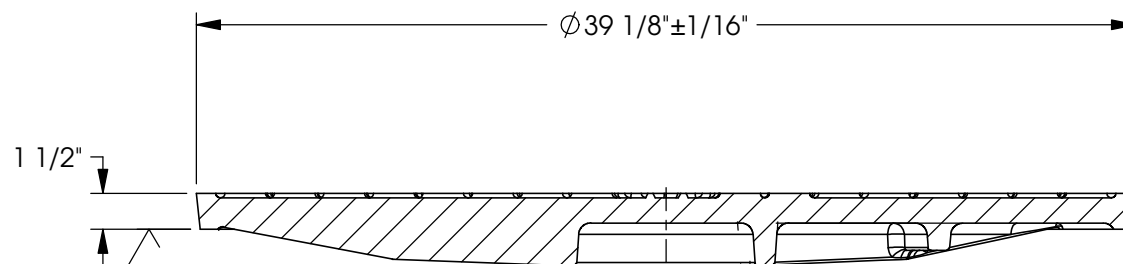
- ASTM A48
- 
- 
- Country of Origin: USA

## Manufacturing Facility

ARDMORE, OK., USA

Fabrication Inspection  
Required.

**SEE DETAIL VIEWS FOR ALL DIMENSIONS AND SPEC. INFORMATION**



**SECTION A-A**

## Drawing Revision

11/18/2011 Designer: SMM  
12/10/2013 Revised By: MAH

## Contact

800 626 4653  
ejco.com