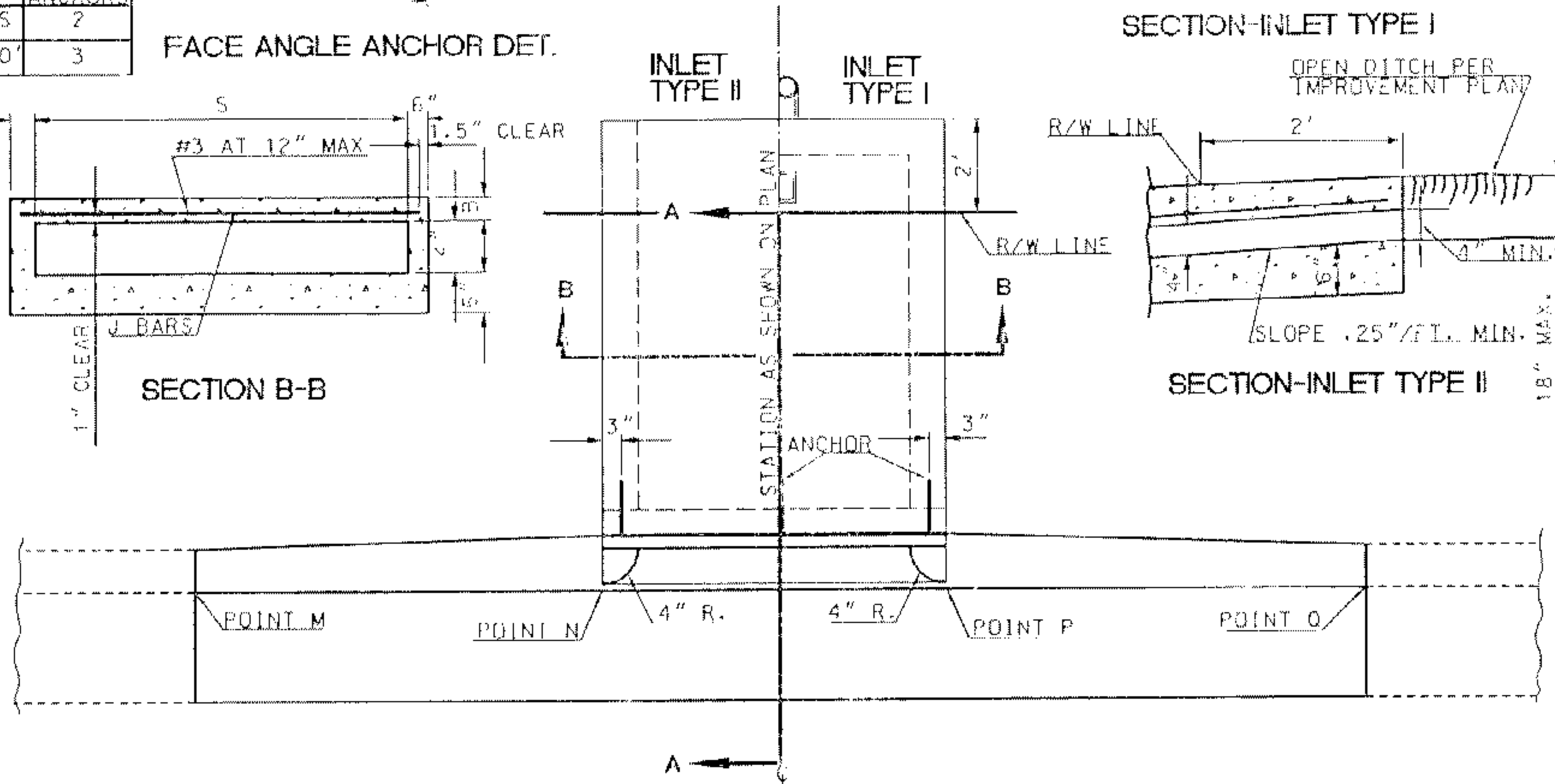
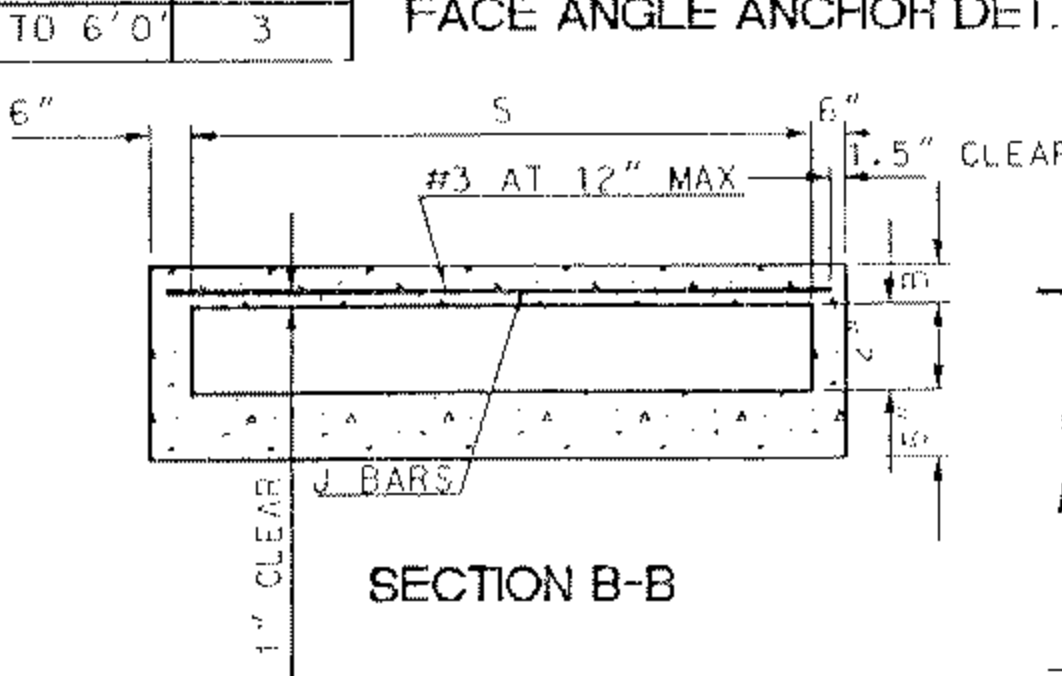


LENGTH OF OPENING	NO. OF ANCHORS
3' OR LESS	2
3' 6" TO 6' 0"	3

FACE ANGLE ANCHOR DET.



STEEL LIST

S	B	J BAR		
		SIZE	SPACING	LENGTH
1'-0"	3"	#3	7"	1'-9"
1'-6"	"	"	"	2'-3"
2'-0"	"	"	"	2'-9"
2'-6"	"	"	"	3'-3"
3'-0"	"	"	"	3'-9"
3'-6"	"	"	6"	4'-3"
4'-0"	"	"	5"	4'-9"
4'-6"	4"	"	6.5"	5'-3"
5'-0"	"	"	5"	5'-9"
5'-6"	"	"	4"	6'-3"
6'-0"	"	"	3.5"	6'-9"

NOTES:

1. NORMAL CURB FACE AT POINT M & O, B + 5" AT POINTS N & P.
2. FLOOR OF CULVERT TO BE TROWELED SMOOTH.
3. ALL EXPOSED METAL SHALL BE GALVANIZED AFTER FABRICATION. ALL EXPOSED CAST IRON FIXTURES SHALL HAVE A BITUMINOUS COATING.
4. CONCRETE SHALL BE 560-C-3250.
5. TOP OF INLET STRUCTURES (TYPE I & II) SHALL BE FLUSH WITH ADJACENT SURFACE WHERE POSSIBLE.
6. SEE STANDARD #319 FOR DETAIL OF GRATED INLET.
7. FOR OPEN DITCH APPROACH (TYPE II), EXTENSION BEYOND R/W LINE IS NOT REQUIRED WHEN BACK OF WALK IS 2' OR MORE FROM R/W LINE.
8. INLET TYPE TO BE SPECIFIED ON IMPROVEMENT PLAN.

APPROVED: George Alvar DATE: 1-3-00  
CITY ENGINEER

CITY OF SANTA ANA  
PUBLIC WORKS AGENCY



DATE	REVISION

PARKWAY CULVERT TYPE 'A'

STD. PLAN NO. 318