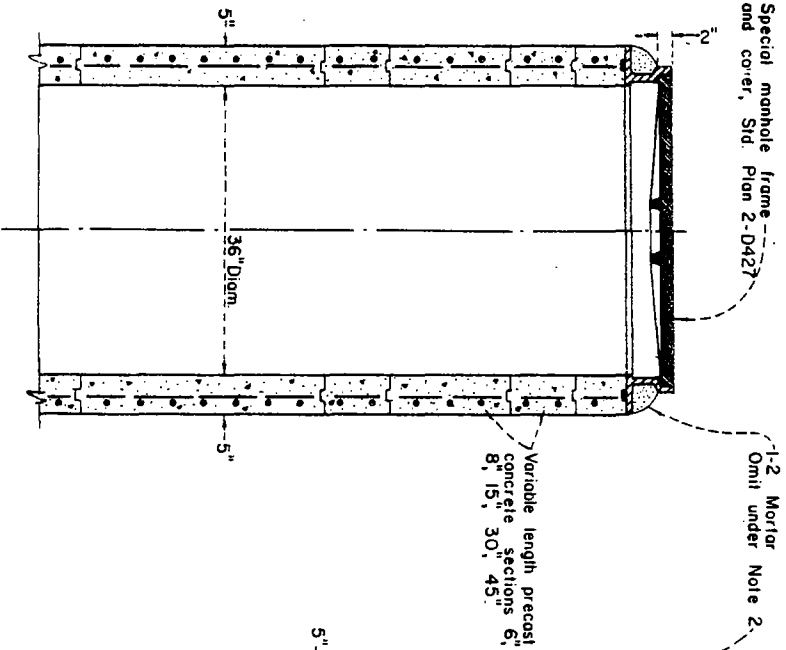


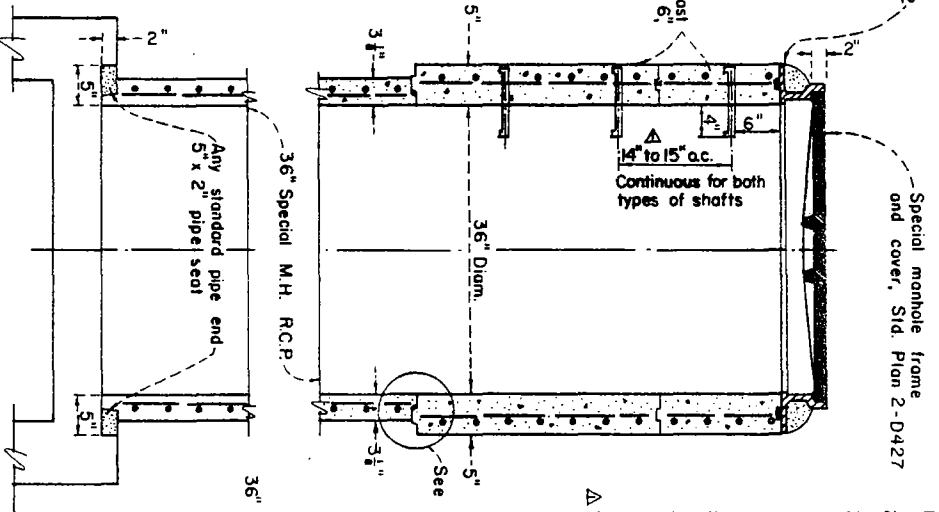
VERTICAL SECTION
OF SPECIAL MANHOLE SHAFT
WITH GRADE RING RISERS

SCALE: 1"=1'-0"



VERTICAL SECTION
OF SPECIAL MANHOLE SHAFT
WITH REINFORCED CONCRETE PIPE

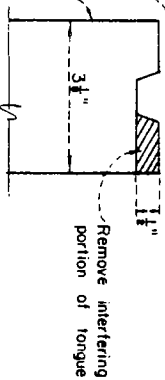
SCALE: 1"=1'-0"



- NOTES:
1. All joints shall be filled with 1-2 mortar and neatly pointed or wiped on inside of shaft.
 2. Color of 1-2 mortar around cover frame shall be omitted in rock and oil streets and in paved streets.
 3. Steps shall be 3/4 inch round galvanized steel. Top step shall be placed 6 inches beneath the manhole cover frame. Width of all steps shall be 14 inches between leg centers. Spacing of steps in shaft shall be 14" to 15" Δ on center. See Std. Dwg. 2-096.
 4. The concrete used shall be of such strength so as to develop 3500 p.s.i. or greater in 28 days.
 5. In lieu of modifying the special manhole R.C.P. as shown on the detail, a precast transition ring may be used.
 6. The precast manhole structures will be inspected by the Engineer prior to shipment to the job site, and he will indicate acceptance by marking the structures with the District's stamp.
 - Δ 7. The surfaces of cones shall be smooth and neatly finished. Shafts with imperfect molding or honeycombed surfaces will not be accepted.

DETAIL

SCALE: 1/2"=1"



DRAWN BY		REVISIONS	
S.Y.H.	NAME	DATE	DESCRIPTION
DESIGNED BY	Δ	11-19-70	Step Spacing and added note 7.
CHECKED BY	R.A.S.		
APPROVED BY	V.M.		
SUBMITTED BY	C.W.H.		

LOS ANGELES COUNTY
FLOOD CONTROL DISTRICT
CONCRETE RINGS AND PIPE
FOR
SPECIAL MANHOLE SHAFT

RECOMMENDED BY	APPROVAL RECOMMENDING		
APPROVED BY	AS DISTRICT DEPUTY ENGINEER		
SCALE	DATE	DWG. NO.	SHEET
AS SHOWN	JAN. 1968	NO. 2-D428	1 OF 1