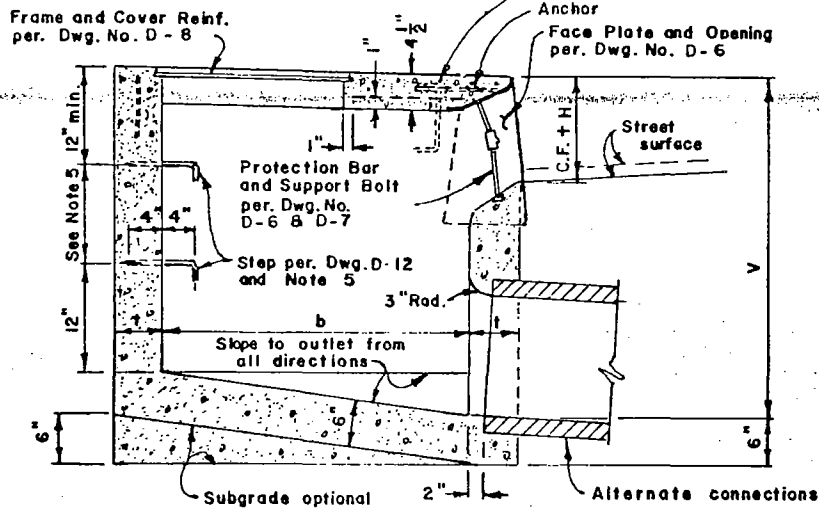


TOP SLAB- STRUCTURAL PLAN



SECTION A-A

NOTES

1. LOCATE CONNECTOR PIPE AT THE DOWNSTREAM END OF THE BASIN UNLESS SPECIFICALLY NOTED OTHERWISE ON THE GENERAL PLAN.
PIPE SHALL BE TRIMMED TO THE FINAL SHAPE AND LENGTH BEFORE THE PLACEMENT OF CONCRETE.
2. FLOOR OF THE BASIN SHALL SLOPE FROM ALL WALLS TO THE OUTLET AND SHALL BE GIVEN A STEEL-TROWELED SURFACE FINISH.
CURVATURE OF THE SILL AND SIDE WALL AT THE GUTTER OPENING SHALL BE FORMED BY CURVED FORMS, AND ALL EXPOSED EDGES, OR CORNERS, AND CONCRETE TO METAL FRAME EDGES SHALL BE GIVEN 1/4" RADIUS EDGER FINISH.
SURFACE OF ALL EXPOSED CONCRETE SHALL CONFORM IN GRADE, SLOPE, COLOR AND FINISH TO THE EXISTING, OR PROPOSED, CURB AND WALK ADJACENT TO THE BASIN.
ALL CONCRETE SHALL BE 560-C-3250.
3. TOP SLAB REINFORCEMENT SHALL BE NO. 3 BARS UNLESS OTHERWISE NOTED.
WALL AND FLOOR REINFORCEMENT PER. STANDARD DRAWING NO. D-5.
4. CURB FACE DIMENSION AT THE CATCH BASIN OPENING (EXIST. C.F.+ H.) SHALL BE AS SHOWN ON THE GENERAL PLAN.
 $V = 3'-6"$, $t = 6$ INCHES, $b = 3'-2"$, UNLESS OTHERWISE SHOWN.
5. PLACE ONE STEP 12 INCHES ABOVE THE FLOOR OF THE BASIN WHEN $V = 3'-0"$ OR LESS.
PLACE STEPS AT 12 INCH INTERVALS FROM THE FLOOR OF THE BASIN WITH THE TOP STEP AT 12 INCHES (MINIMUM) BELOW THE TOP OF THE MANHOLE WHEN $V = 3'-0"$ OR MORE.

DATE 1-20-78

CATCH BASIN NO. 1

SCALE NONE

STD. DRAWING NO.

D-1

[Signature]
CITY ENGINEER

ENGINEERING DEPARTMENT

CITY OF PALM DESERT