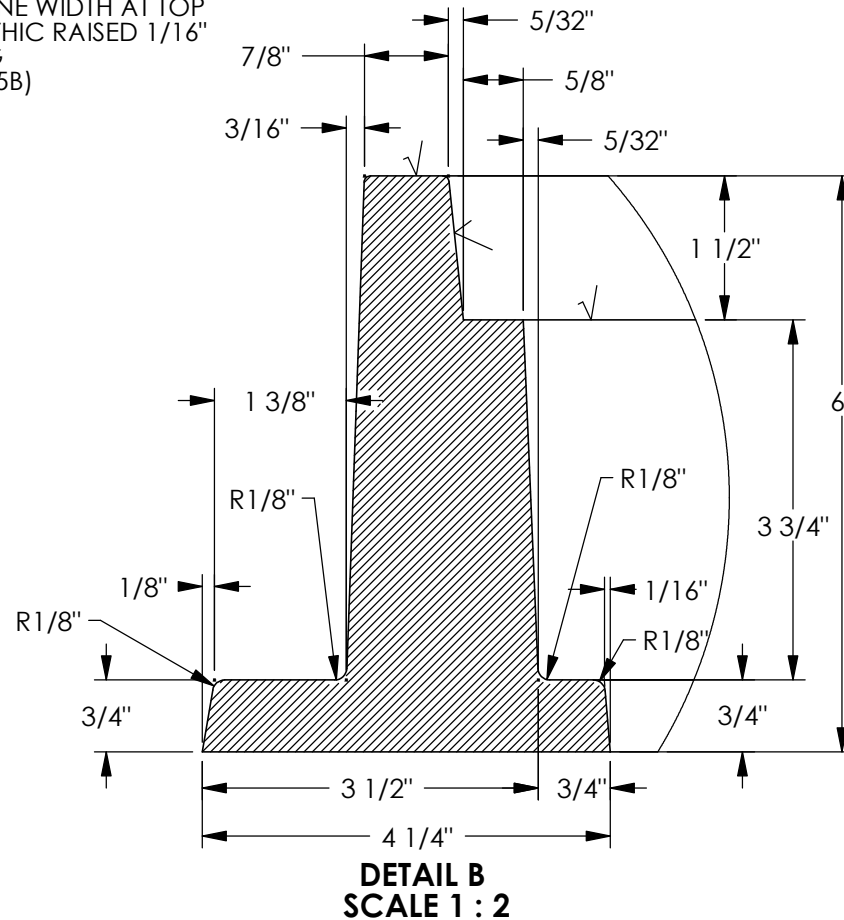
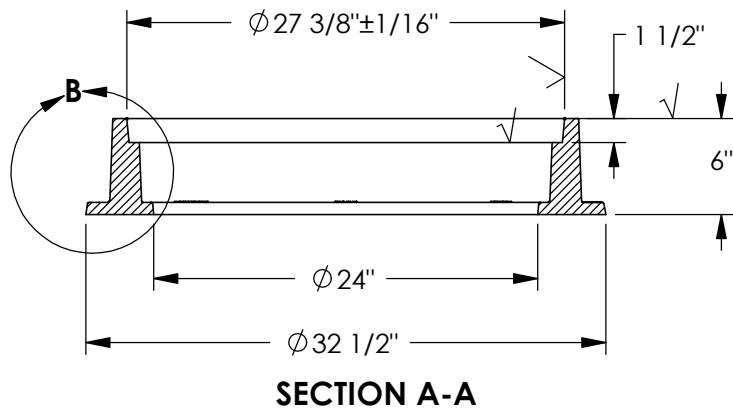
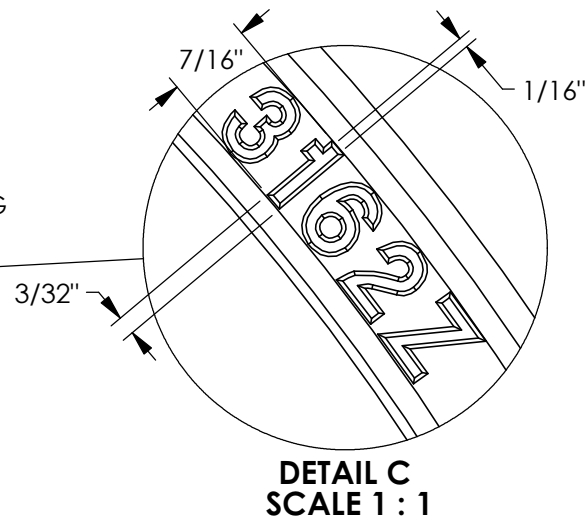
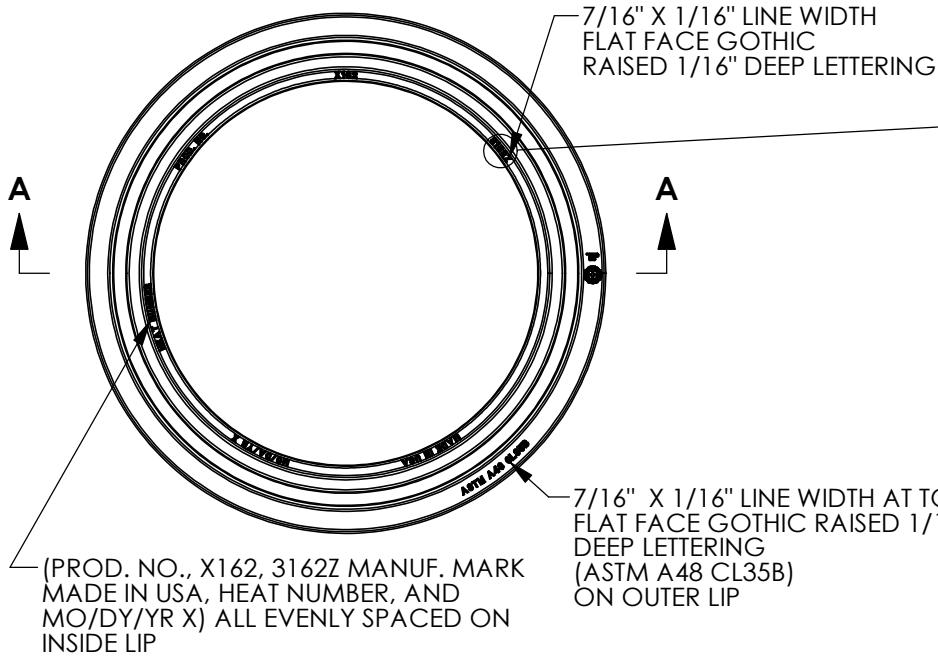


3162Z Frame



Product Number

00316211

Design Features

- Materials
Gray Iron (CL35B)
- Design Load
Heavy Duty
Proof Load Tested to 53,200 LBS.
- Open Area
n/a
- Coating
Asphaltic Coated
- √ Designates Machined Surface

Weight

MIN. 250 LBS.
MAX. 275 LBS.

Certification

- ASTM A48
-
- Country of Origin: USA

Manufacturing Facility

ARDMORE, OK., USA

Fabrication Inspection
Required.

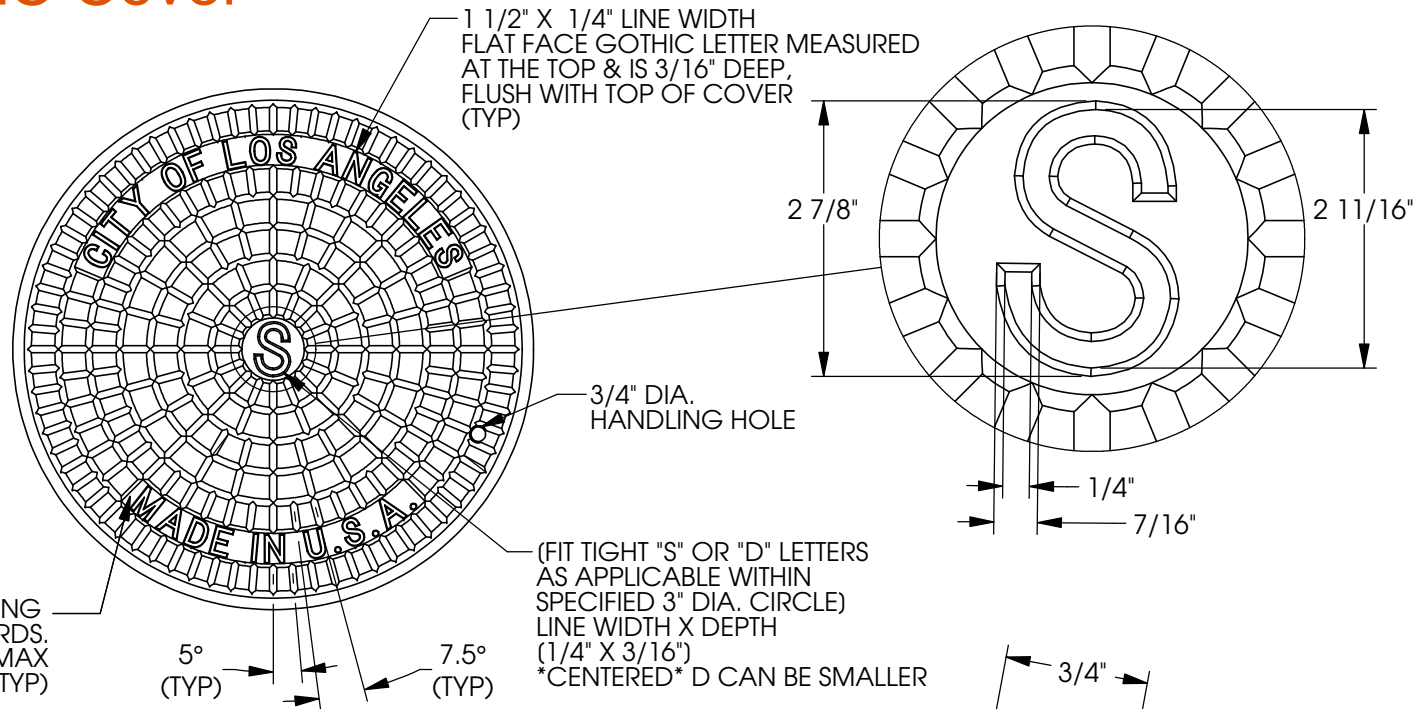
Drawing Revision

1/5/2015 Designer: DAE
Revised By:

Contact

800 626 4653
ejco.com

3162C Cover



Product Number

00316285

Design Features

- Materials
Gray Iron (CL35B)
- Design Load
Heavy Duty
Proof Load Tested to 53,200 LBS.
- Open Area
n/a
- Coating
Asphaltic Coated
- √ Designates Machined Surface

Weight

MIN. 175 LBS.
MAX. 195 LBS.

Certification

-ASTM A48

-

-

-Country of Origin: USA

Manufacturing Facility

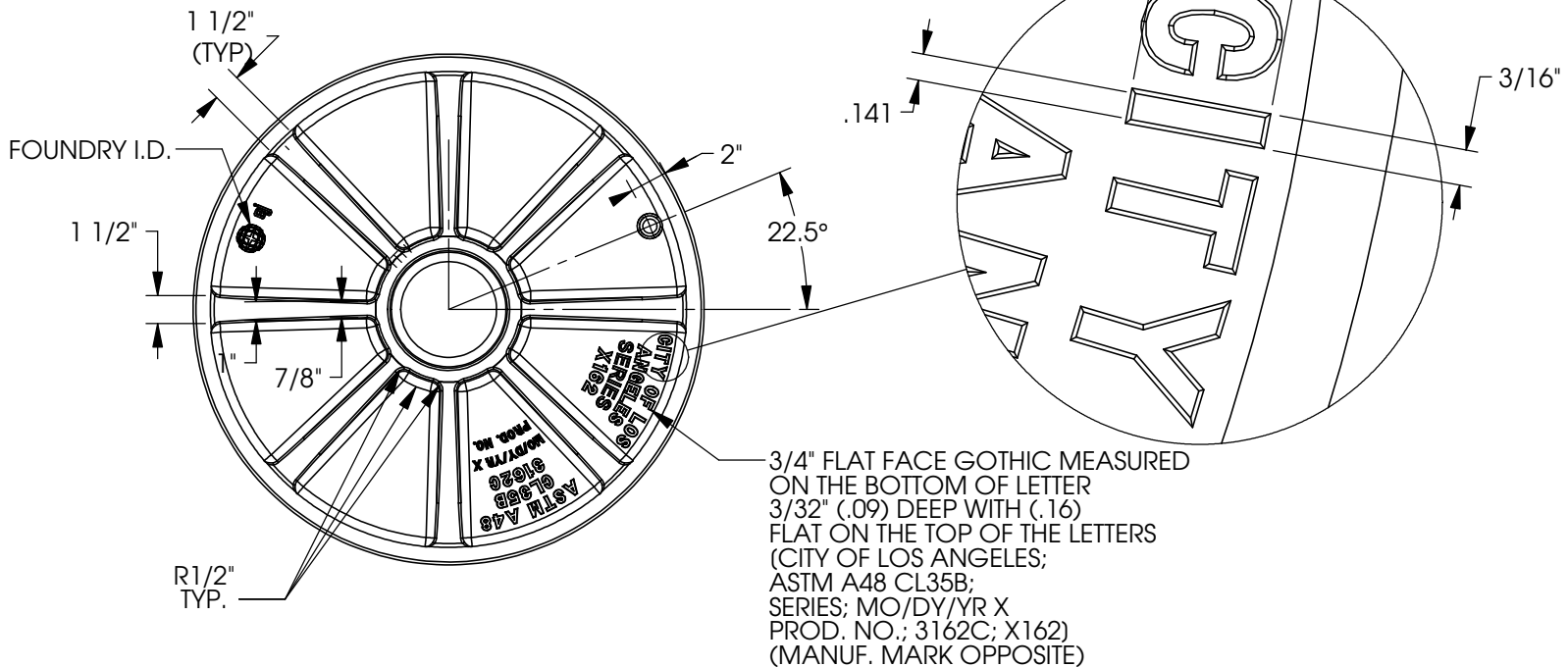
ARDMORE, OK., USA

Fabrication Inspection
Required.

Drawing Revision

11/18/2011 Designer: SMM

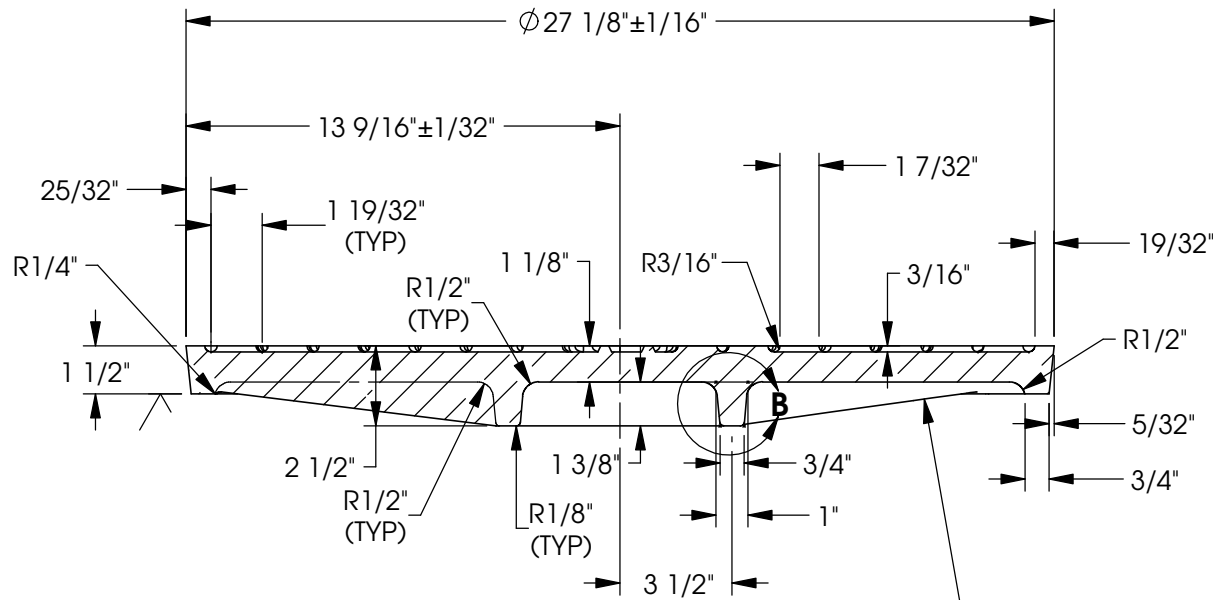
12/10/2013 Revised By: MAH



Contact

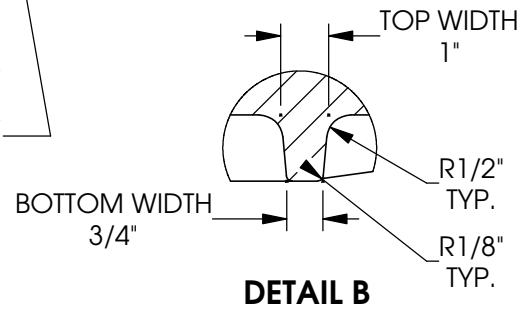
800 626 4653
ejco.com

3162C Cover

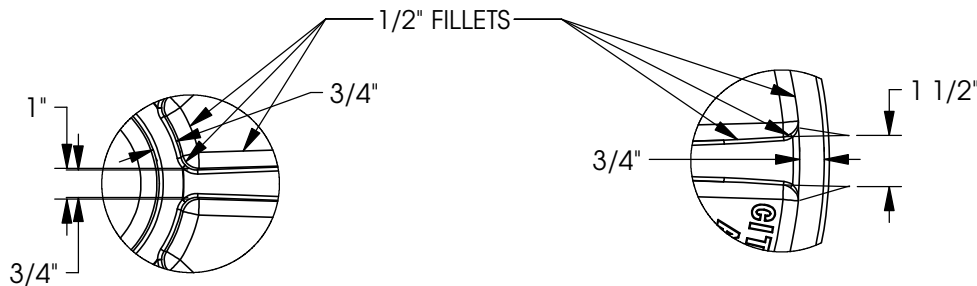


SECTION A-A

NOTE: RIGHT SIDE OF CROSS SECTION A-A IS CUT BETWEEN RIBS SHOWING THE SEAT PROFILE, SEE LEFT SIDE OF SECTION A-A FOR BEGINNING OF CROSS RIB



DETAIL B



RIB VIEW DETAIL

RIB VIEW DETAIL

Product Number

00316285

Design Features

- Materials
Gray Iron (CL35B)
- Design Load
Heavy Duty
Proof Load Tested to 53,200 LBS.
- Open Area
n/a
- Coating
Asphaltic Coated
- √ Designates Machined Surface

Weight

MIN. 175 LBS.
MAX. 195 LBS.

Certification

- ASTM A48
-
- Country of Origin: USA

Manufacturing Facility

ARDMORE, OK., USA

Fabrication Inspection
Required.

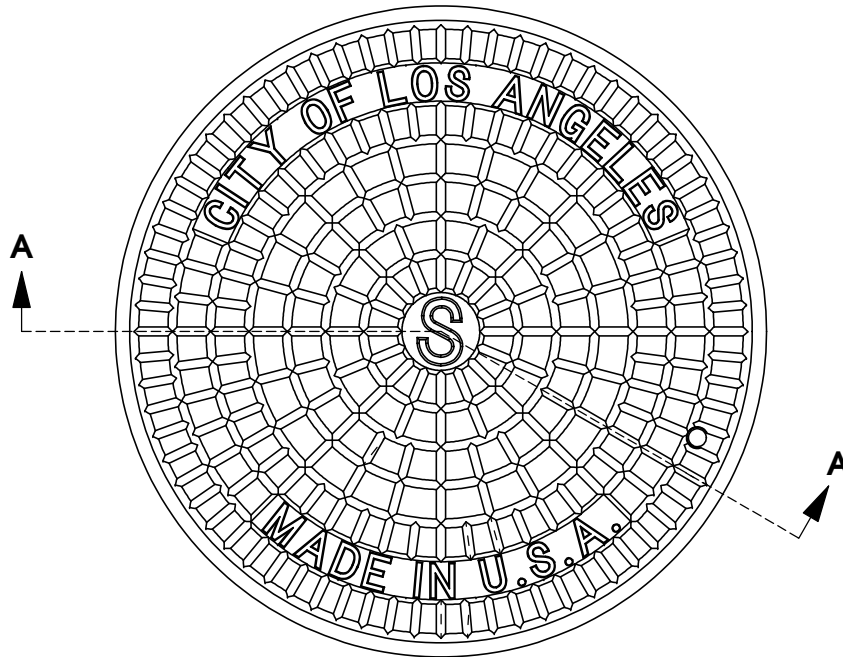
Drawing Revision

11/18/2011 Designer: SMM
12/10/2013 Revised By: MAH

Contact

800 626 4653
ejco.com

3162C Cover



Product Number

00316285

Design Features

- Materials
Gray Iron (CL35B)
- Design Load
Heavy Duty
Proof Load Tested to 53,200 LBS.
- Open Area
n/a
- Coating
Asphaltic Coated
- √ Designates Machined Surface

Weight

MIN. 175 LBS.
MAX. 195 LBS.

Certification

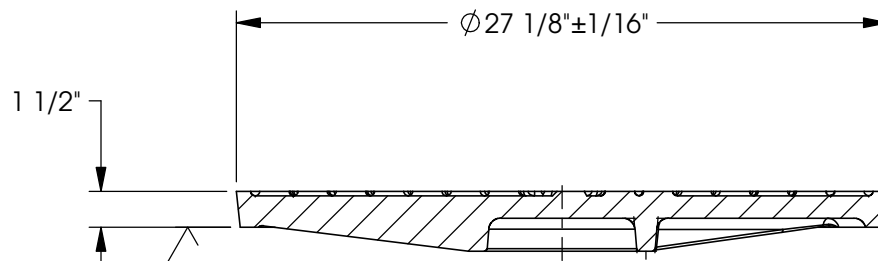
- ASTM A48
-
- Country of Origin: USA

Manufacturing Facility

ARDMORE, OK., USA

Fabrication Inspection
Required.

SEE DETAIL VIEWS FOR ALL DIMENSIONS AND SPEC. INFORMATION



SECTION A-A

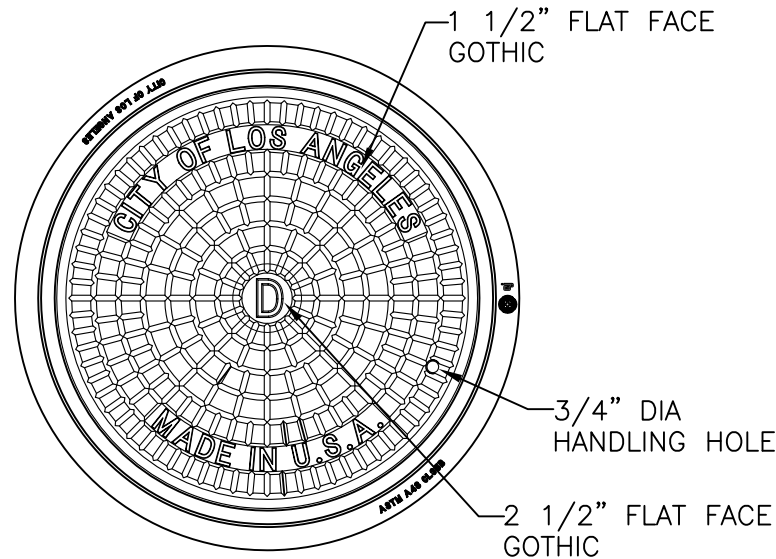
Drawing Revision

11/18/2011 Designer: SMM
12/10/2013 Revised By: MAH

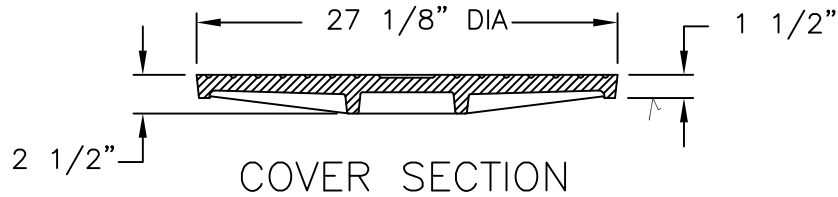
Contact

800 626 4653
ejco.com

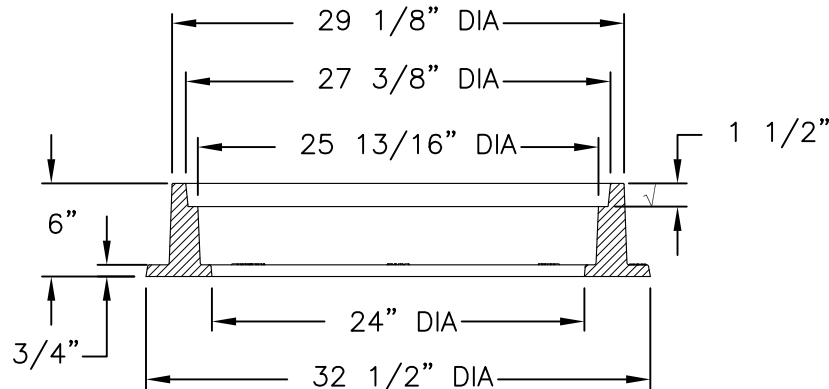
3162Z 3162C Assembly



PLAN VIEW



COVER SECTION



FRAME SECTION

Product Number

00316286A01

Design Features

-Materials

Frame

Gray Iron (CL35B)

Cover

Gray Iron (CL35B)

-Design Load

Heavy Duty

-Open Area

n/a

-Coating

Dipped

-√ Designates Machined Surface

Certification

- ASTM A48

- H20

-

-Country of Origin: USA

Major Components

00316210

00316286

Drawing Revision

03/31/2014 Designer: DAE

09/21/2017 Revised By: DVD

Disclaimer

Weights (lbs./kg) dimensions (inches/mm) and drawings provided for your guidance. We reserve the right to modify specifications without prior notice.

CONFIDENTIAL: This drawing is the property of EJ GROUP, Inc., and embodies confidential information, registered marks, patents, trade secret information, and/or know how that is the property of EJ GROUP, Inc. Copyright © 2012 EJ GROUP, Inc. All rights reserved.

Contact

800 626 4653

ejco.com