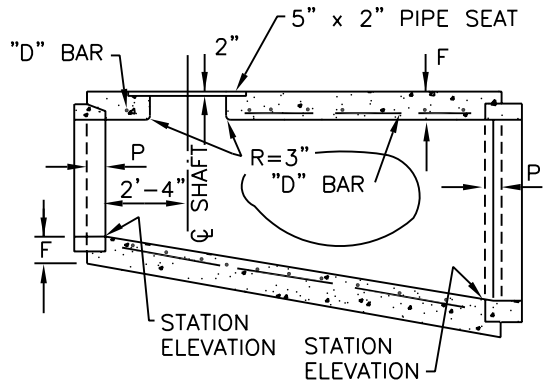
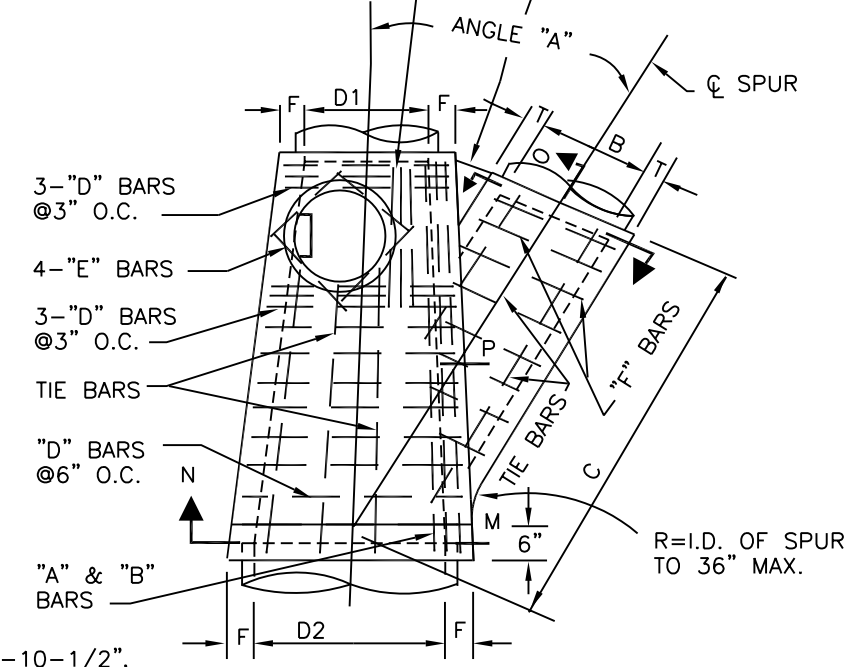


3-#4 "J" BARS, 4'-8" LONG, @3" O.C.
CONTINUE ADDITIONAL BARS @ 6" O.C.
TO INSIDE EDGE OF MANHOLE

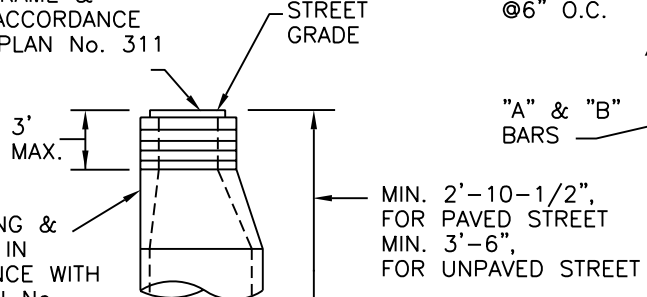


LOGITUDINAL SECTION

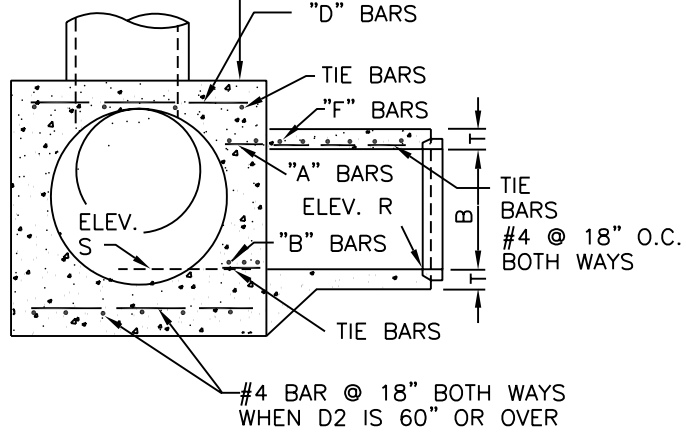


PLAN
SHAFT NOT SHOWN

MANHOLE FRAME & COVER IN ACCORDANCE WITH STD. PLAN No. 311



CONC. RING & REDUCER IN ACCORDANCE WITH STD. PLAN No. 312, 313, 314



SECTION N-M-P-O

D2 OR B	A & B BARS	D & F BARS
24"-39"	#5 @ 3"	#4 @ 6"
42"-84"	#6 @ 3"	#5 @ 6"
90"-96"	#7 @ 3"	#6 @ 6"

NOTES:

1. USE JUNCTION STRUCTURE No. III FOR INLET PIPES LARGER THAN 24 INCHES.
2. SEE STD. PLAN No. 308A FOR NOTES AND OTHER DETAILS.

D2	F	B	T
36"	8"	24"	5-1/4"
39"	8"	27"	5-1/2"
42"	8"	30"	6"
45"	8"	33"	6-1/4"
48"	8"	36"	6-1/2"
51"	8-1/2"	39"	7"
54"	9"	42"	7-1/2"
57"	9-1/4"	45"	7-3/4"
60"	9-1/2"	48"	8"
63"	10"	51"	8-1/2"
66"	10-1/4"	54"	9"
69"	10-3/4"	57"	9-1/4"
72"	11"	60"	9-1/2"
78"	11-3/4"	63"	10"
84"	12-1/2"	66"	10-1/2"
90"	13-1/4"	69"	10-3/4"
96"	14"	72"	11"

REVISIONS	CITY OF IRVINE	STANDARD PLAN No.
	JUNCTION STRUCTURE No. III	308
	Approved by: Mark L. Carroll R.C.E. 31515 City Engineer	Date: 6-2-92
		Sheet 1 of 1