

REVISIONS

APPROVALS

DESCRIPTIONS

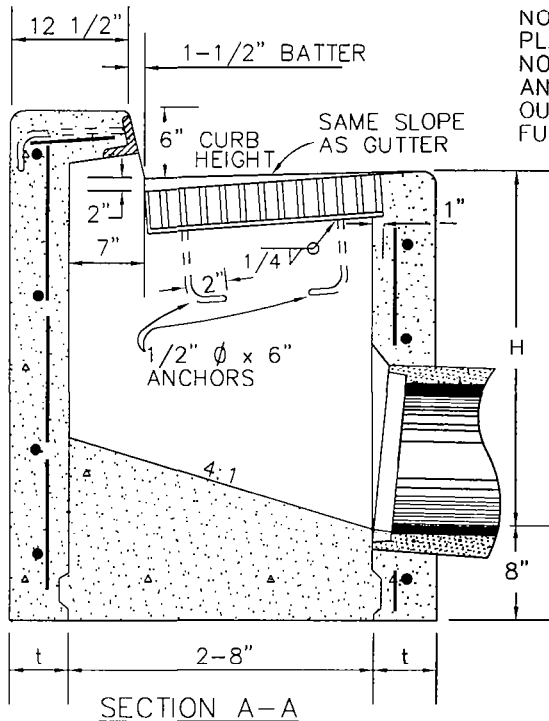
BY

DATE

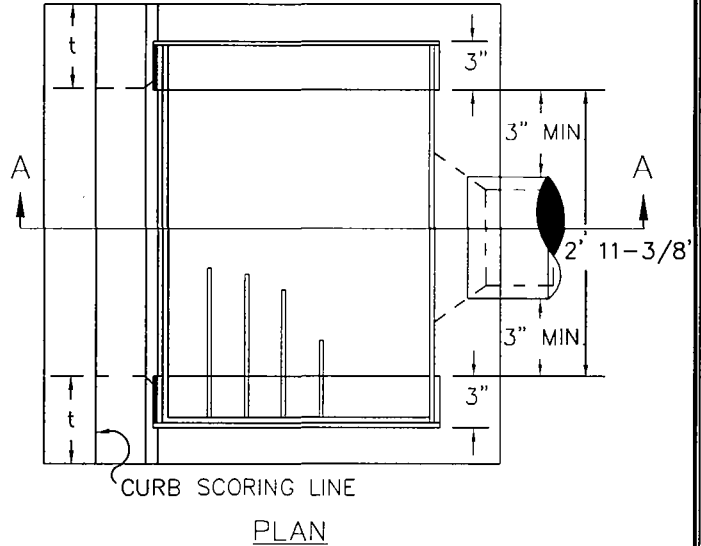
APPROVED

COUNCIL RESOLUTION NO. 26-92

3/10/92

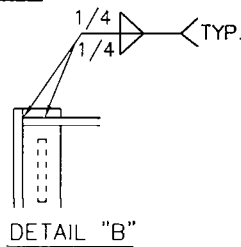
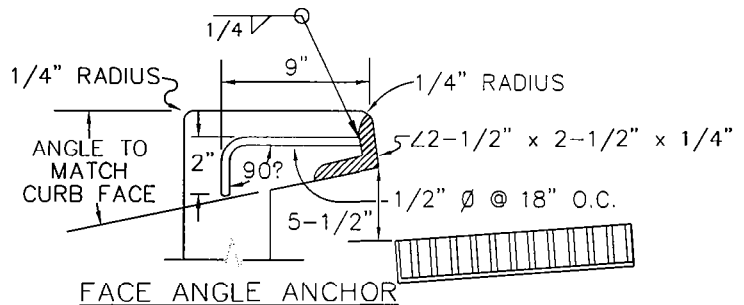


NOTE: REINFORCING STEEL SHALL BE #4 BARS AT 18" O.C. PLACED 1-1/2" CLEAR TO INSIDE OF BOX UNLESS OTHERWISE NOTED. BASIN FLOORS SHALL HAVE WOOD FLOAT FINISH AND A MINIMUM SLOPE OF 4:1 FROM ALL DIRECTIONS TOWARDS OUTLET PIPE. USE CLASS "A" P.C.C. FACE ANGLE TO EXTEND FULL WIDTH OF BOX.



H	t
8'-0" OR LESS	6"
8'-1" TO 20'-0"	8"

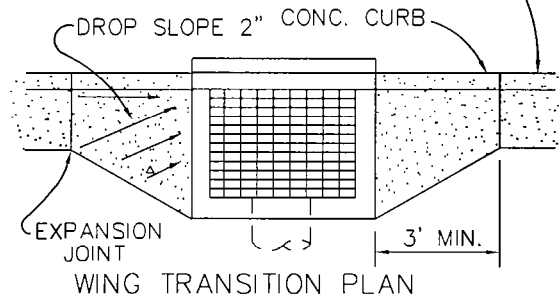
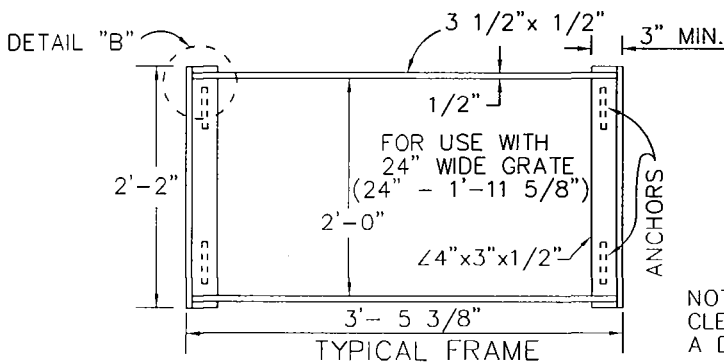
HEIGHT TABLE



NOTE: FRAME SHALL BE DIPPED OR PAINTED IN COMMERCIAL QUALITY ASPHALTUM PAINT.

NOTE: GRATES TO BE BICYCLE PROOF PER STATE STD. PLAN D77-B

A.C. BERM IN RURAL AREAS ONLY



NOTE: PIPES THAT ARE UNABLE TO ATTAIN 3" MIN. CLEARANCE FROM INSIDE BOX WALLS WILL REQUIRE A DESIGN APPROVED BY THE CITY ENGINEER.

DRAWN BY:
R.A.L.
DESIGNED BY:
S.J.S.
DATE:
02/27/92
FILE NAME:
AT502.DWG

CITY OF ATASCADERO
ENGINEERING DEPARTMENT

DRAWING NO.

STORM DRAIN INLET

502