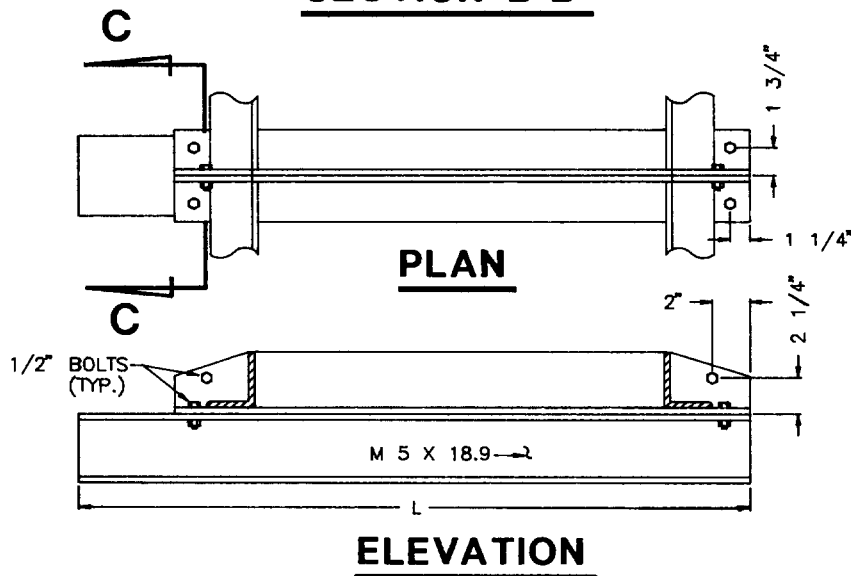


ALHAMBRA FOUNDRY
 GRATE NO. A-1546 AND A-1555



CENTER SUPPORT ASSEMBLY

CITY OF RANCHO CUCAMONGA, CALIFORNIA

APPROVED BY:
Wm. J. ... 6-1-92
 CITY ENGINEER
 R.C.E. 24953

DATE

**FRAME AND GRATING
 FOR CATCH BASINS**

USE WITH STANDARD SPECIFICATIONS FOR PUBLIC WORKS CONSTRUCTION

STANDARD PLAN

306

SHEET 1 OF 2

NOTES:

1. ALL PARTS SHALL BE STEEL, EXCEPT THAT END SPACERS MAY BE CAST IRON.
2. ALL PARTS SHALL BE GALVANIZED AFTER FABRICATION, EXCEPT THAT GRATINGS SHALL BE ASSEMBLED AFTER COMPONENT PARTS ARE GALVANIZED.
3. ALL DIMENSIONS ARE FINISHED DIMENSIONS AND INCLUDE GALVANIZING.
4. ALL BOLT HOLES SHALL BE 5/8"-INCH DIAMETER.
5. ALL THREADS SHALL BE NATIONAL COARSE SERIES (NC).
6. CENTER SUPPORT ASSEMBLY REQUIRED WHEN TWO OR MORE GRATINGS ARE SPECIFIED ON PLANS.
L = 64 INCHES FOR CURB OPENING CATCH BASIN WITH GRATING(S) AND DEBRIS SKIMMER (STANDARD PLAN 301).
L = 44 INCHES FOR CURB OPENING CATCH BASIN WITH GRATING(S) (STANDARD PLAN 302).
L = 36 INCHES FOR CURBSIDE GRATING CATCH BASIN (STANDARD PLAN 303).
L = 36 INCHES FOR GRATING CATCH BASIN - ALLEY (LONGITUDINAL) (STANDARD PLAN 304).
7. WIDTH OF SPACERS MAY BE REDUCED AS NECESSARY TO OBTAIN CORRECT OVERALL GRATING WIDTH.

CITY OF RANCHO CUCAMONGA, CALIFORNIA

APPROVED BY:

W. McNeil 6-1-92
CITY ENGINEER DATE
R.C.E. 24953

**FRAME AND GRATING
FOR CATCH BASINS**

USE WITH STANDARD SPECIFICATIONS FOR PUBLIC WORKS CONSTRUCTION

STANDARD PLAN

306

SHEET 2 OF 2