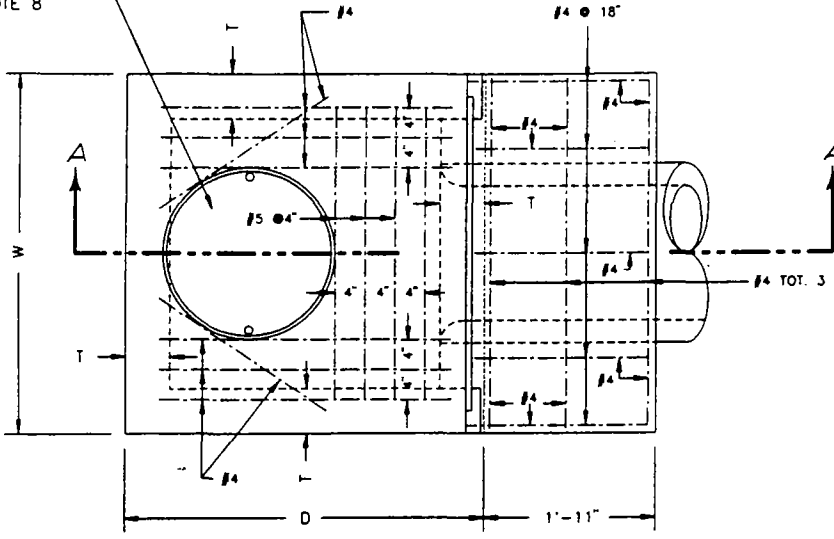
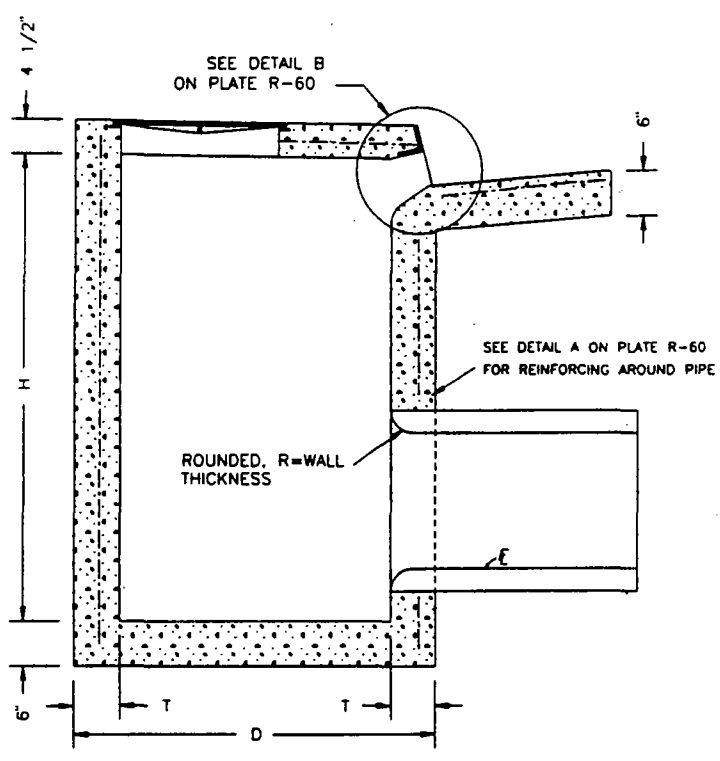


ALHAMBRA FOUNDRY 22" GALVANIZED FRAME & COVER
 # A-1530 WITH TWO 3/4" STAINLESS STEEL SOCKET HEAD
 SET SCREWS. (SET OPPOSITE AND FINISHED FLUSH) OR EQUAL.
 SEE NOTE 8



PLAN



SECTION A-A

NOTE:
 SEE PLATE R-60 FOR NOTES
 PERTAINING TO THIS PLATE.

PLOTTED 06/15/1995

NOT TO SCALE

ACAD FILE #23\R-59

Revisions	DATE:
Desc	6-15-1995
	DESIGNED BY: R.J.L.
	DRAWN BY: A.LUNA
	CHECKED BY:

COUNTY OF KERN
 STATE OF CALIFORNIA
**DEVELOPMENT
 STANDARD**

TYPE "A"
 MINOR STRUCTURE

PLATE NO.
 R-59