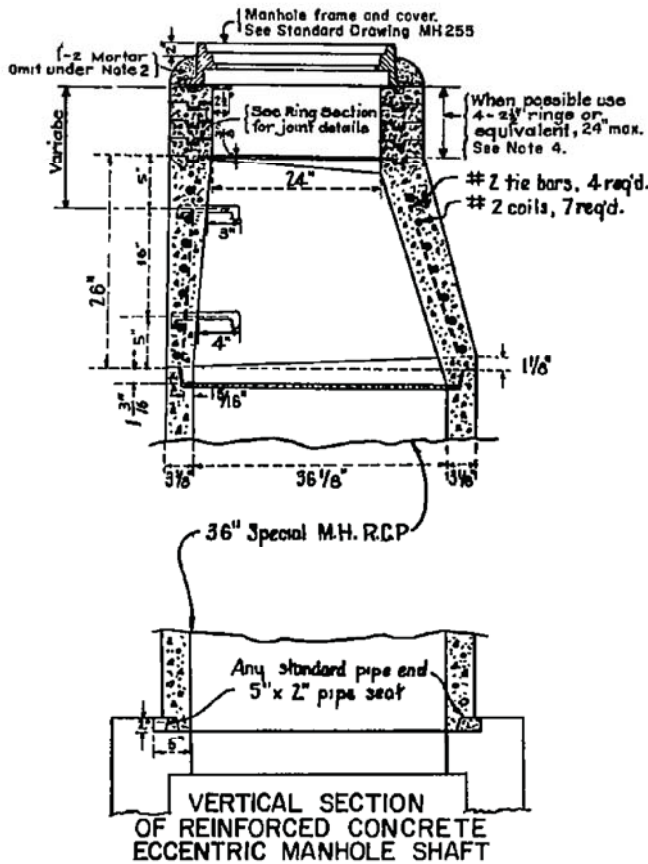


VERTICAL SECTION OF PLAIN CONCRETE ECCENTRIC MANHOLE SHAFT

2 1/2 inch rings shall be reinforced with two round steel hoops; 6 inch and 8 inch rings shall be reinforced with four hoops, tied with No. 14 A.S. & W. gauge wire 8 inches on centers.



CROSS SECTION OF REINFORCED CONCRETE RING



VERTICAL SECTION OF REINFORCED CONCRETE ECCENTRIC MANHOLE SHAFT

NOTES

1. ALL JOINTS shall be filled with 1-2 mortar and neatly pointed or wiped on inside of shaft.
2. COLLAR of 1-2 mortar around cover frame shall be omitted in rock and oil streets and in paved streets.
3. STEPS shall be 3/4 inch round galvanized steel. Top step shall be placed directly beneath the manhole cover frame.
Width of all steps shall be 14 inches between leg centers. Except where shown otherwise, spacing of steps in shaft shall be 16 inches on center.
4. ECCENTRIC MANHOLE shaft, reducer, and rings may be plain concrete. For unreinforced sections, the minimum thickness shall be 6 inches. The concrete used shall be Class 'A'.

L.A.C.F.C.D. STD. No. 2-D107



RIVERSIDE COUNTY FLOOD CONTROL AND WATER CONSERVATION DISTRICT
 APPROVED BY: *Warren D. Williams*
 CHIEF ENGINEER
 DATE: April 5, 2004

MANHOLE SHAFT FOR CAST PIPE

STANDARD DRAWING NUMBER MH257

R.C.E. NO. 32336