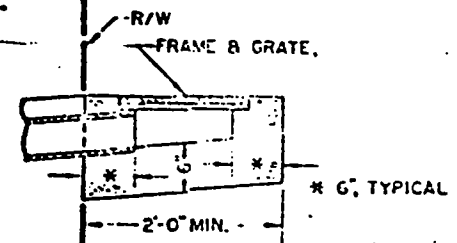
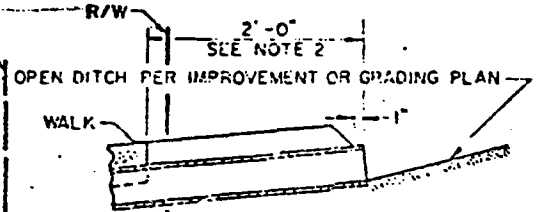


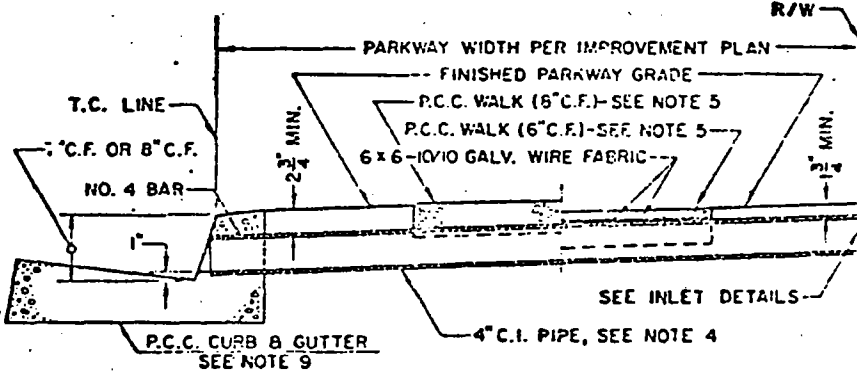
CASE I INLET  
TRANSITION STRUCTURE SECTION



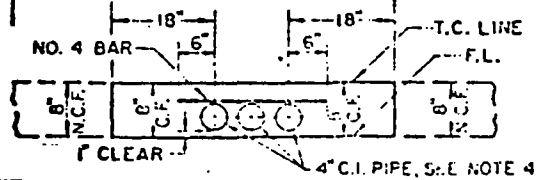
CASE II INLET  
DROP INLET CATCH BASIN SECTION



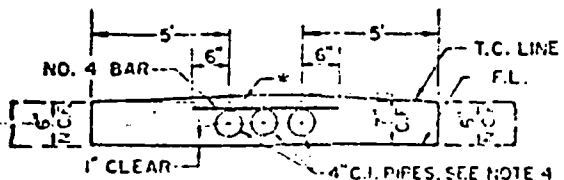
CASE III INLET  
GRADED DITCH SECTION



SECTION A-A



CURB PROFILE  
8\"/>



CURB PROFILE  
6\"/>

NOTES:

1. WHEN THE TOE OF SLOPE IS WITHIN THE R/W, INLET CASE I BEGINS AT THE TOE RATHER THAN AT THE R/W LINE.
2. FOR OPEN DITCH APPROACH (CASE III INLET), THE EXTENSION BEYOND THE R/W LINE IS NOT REQUIRED WHEN BACK OF WALK IS MORE THAN 2' FROM THE R/W LINE.
3. TOP OF INLET STRUCTURE (CASE I AND II) TO BE FLUSH WITH ADJACENT SURFACE WHERE PRACTICABLE.
4. CONSTRUCT P.C.C. WALK WHEN SPECIFIED ON PLAN. THE CONTRACT PRICE PAID FOR P.C.C. WALK ITEM SHALL INCLUDE WALK CONSTRUCTED IN CONJUNCTION WITH PARKWAY CULVERT.
5. "N" EQUALS NUMBER OF PIPES (MAXIMUM OF SIX) AS SPECIFIED ON PLAN.
6. INLET CASE TO BE SPECIFIED ON IMPROVEMENT OR GRADING PLAN.
7. ANGLE "θ" EQUALS 0° UNLESS OTHERWISE SPECIFIED.
8. TYPE, DIMENSIONS, AND ELEVATIONS OF P.C.C. CURB AND GUTTER PER IMPROVEMENT PLAN.

NOTE: APPLIES TO ANY NUMBER OF PIPES

NOTE: APPLIES TO ANY NUMBER OF PIPES  
\* NORMAL TO GRADE LINE AS SHOWN ON PROFILE

CITY OF SAN BERNARDINO - PUBLIC WORKS DEPARTMENT

PARKWAY CULVERT NO. 2

STANDARD PLAN

APPROVED *P. Heck* 11-30-71  
DATE

401