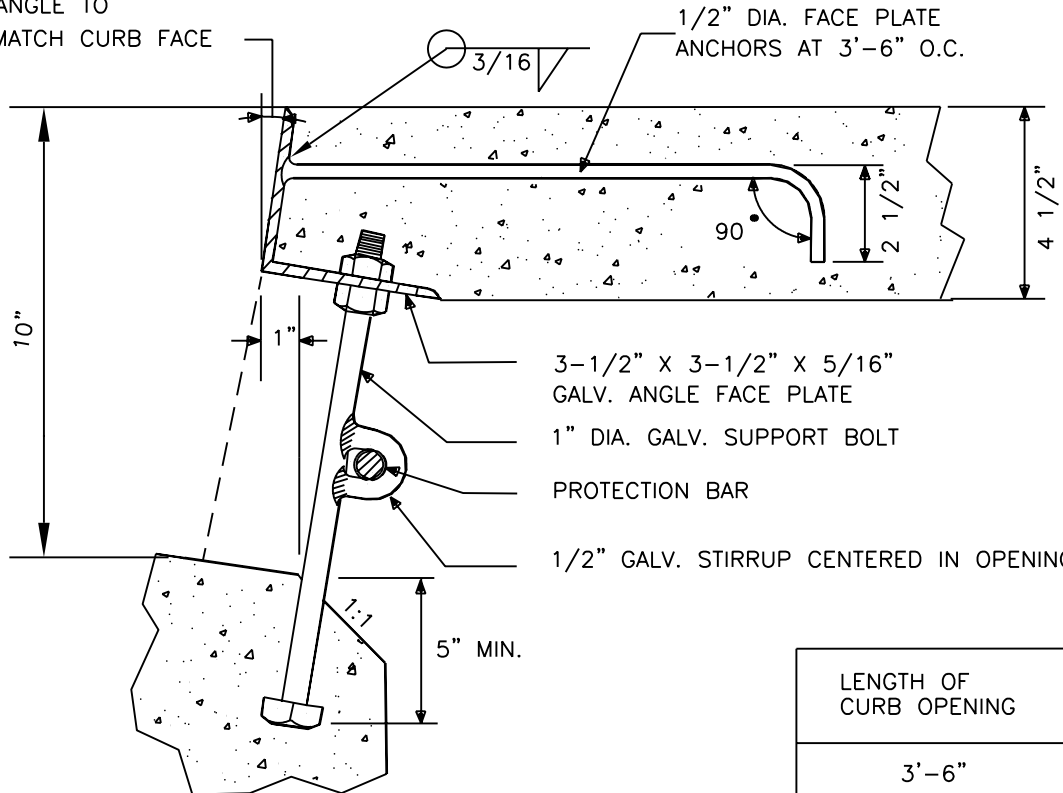


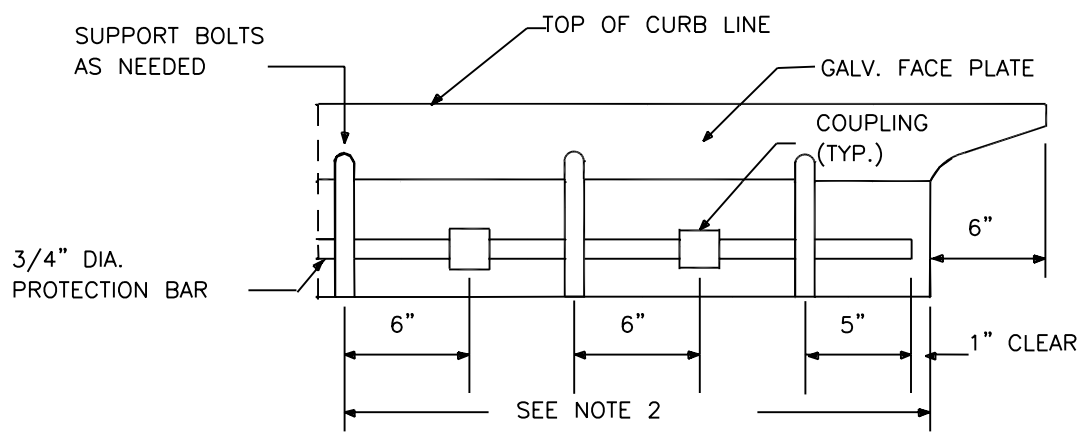
ANGLE TO MATCH CURB FACE



- 1/2" DIA. FACE PLATE ANCHORS AT 3'-6" O.C.
- 3-1/2" X 3-1/2" X 5/16" GALV. ANGLE FACE PLATE
- 1" DIA. GALV. SUPPORT BOLT
- PROTECTION BAR
- 1/2" GALV. STIRRUP CENTERED IN OPENING

FACE PLATE ANCHORAGE AND CURB SUPPORT DETAIL

LENGTH OF CURB OPENING	# OF ANCHORS
3'-6"	2
7'-0"	3
10'-0"	4
14'-0"	5
21'-0"	7



PROTECTION BAR DETAIL

REVISIONS	CITY OF IRVINE	STANDARD PLAN No. 302 Sheet 1 of 2
	CATCH BASIN DETAILS	
	FOR STREETS WITH TYPE "A-2" CURB & GUTTER	
	Approved by: Mark L. Carroll R.C.E. 31515 City Engineer	
	Date: 8-11-00	