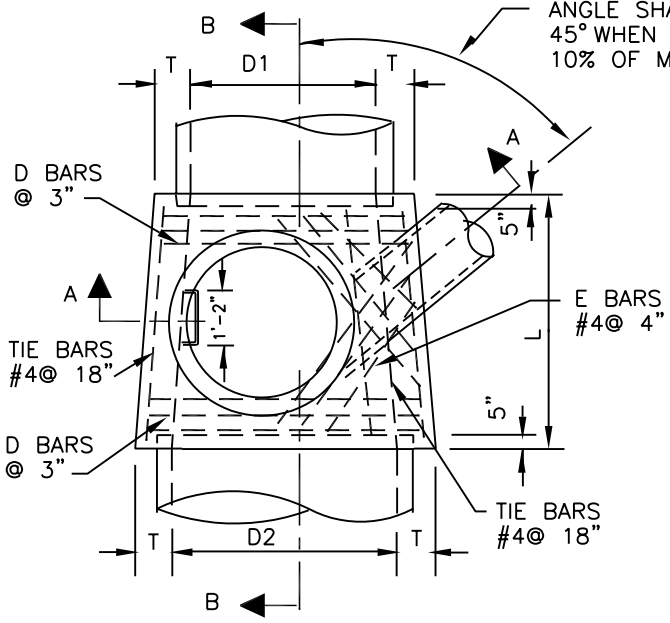
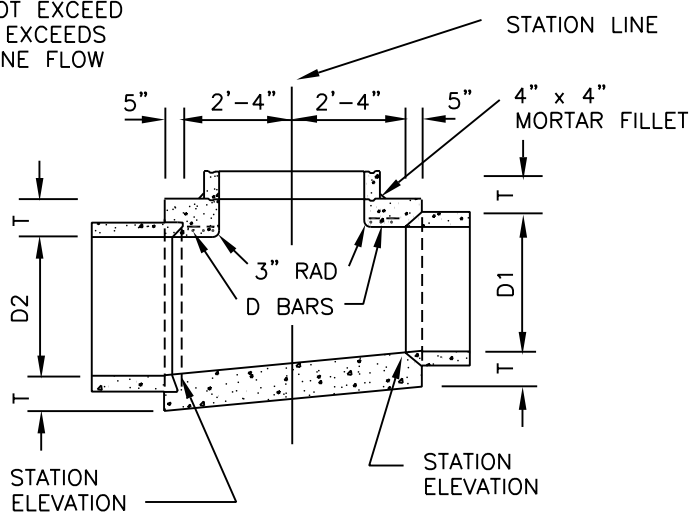


ANGLE SHALL NOT EXCEED 45° WHEN FLOW EXCEEDS 10% OF MAIN LINE FLOW



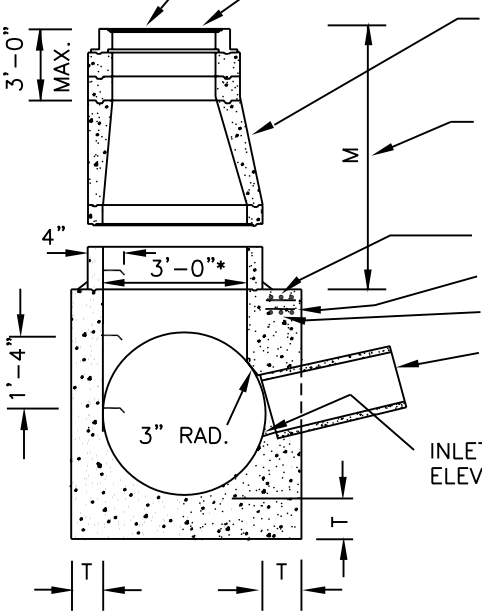
**PLAN**

(SHAFT NOT SHOWN)



**SECTION B-B**

STREET GRADE  
MANHOLE FRAME & COVER IN ACCORDANCE WITH STD. PLAN No. 311



CONC. RINGS & REDUCER IN ACCORDANCE WITH STD. PLAN No. 312, 313 & 314  
MIN. 2'-10-1/2" FOR PAVED STREETS  
MIN. 3'-6" FOR UNPAVED STREETS  
SEE DETAIL "M" FOR SHALLOW INSTALLATIONS.  
E BARS  
TIE BARS  
D BARS  
MAX. 24" DIA. SIDE INLET. USE J.S. No. III FOR SIDE INLETS LARGER THAN 24" SEE STD. No. 308

D2	T
42"	8"
45"	8"
48"	8"
51"	8-1/2"
54"	9"
57"	9-1/4"
60"	9-1/2"
63"	10"
66"	10-1/4"
69"	10-3/4"
72"	11"
78"	11-3/4"
84"	12-1/2"
90"	13-1/4"
96"	14"

**SECTION A-A**

\* MANHOLE SHAFT SHALL BE 4'-0" & J.S. WIDTH SHALL BE 4'-0" WHEN "M" IS GREATER THAN 20'. ALSO USE 6" THICK RINGS IN ACCORDANCE WITH STD. PLAN No. 313 & 314

- NOTES:
1. SEE STD. No. 307A FOR NOTES AND OTHER DETAILS.
  2. USE JUNCTION STRUCTURE No. II FOR MAINLINE PIPE 42 INCH DIA. OR LARGER.

DIAM. D2	D BARS			E BARS		
	MIN. NO. REQ'D	SIZE	LENGTH	MIN. NO. REQ'D	SIZE	LENGTH
42"*	6	#5	4'-6"	4	#4	3'-2"
45"*	6	#5	4'-10"	4	#4	3'-5"
48"	6	#5	5'-1"	4	#4	3'-7"
51"	6	#5	5'-5"	6	#4	4'-9"
54"	6	#5	5'-9"	6	#4	5'-1"
57"	6	#5	6'-1"	6	#4	5'-6"
60"	6	#5	6'-4"	6	#4	5'-11"
63"	6	#5	6'-8"	6	#4	6'-3"
66"	6	#5	7'-0"	8	#4	6'-8"
69"	6	#5	7'-4"	8	#4	6'-8"
72"	6	#5	7'-7"	8	#4	6'-8"
78"	6	#5	8'-3"	8	#4	6'-8"
84"	6	#5	8'-10"	10	#4	6'-8"
90"	6	#6	9'-6"	10	#4	6'-8"
96"	6	#6	10'-1"	10	#4	6'-8"

**REVISIONS**

CITY OF IRVINE

STANDARD PLAN No.

**JUNCTION STRUCTURE No. II**

**307**

Approved by: Mark L. Carroll R.C.E. 31515  
City Engineer

Date: 6-2-92

Sheet 1 of 1