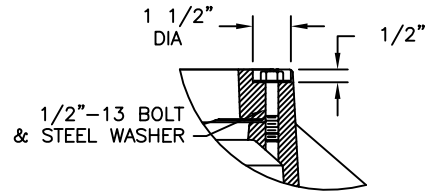
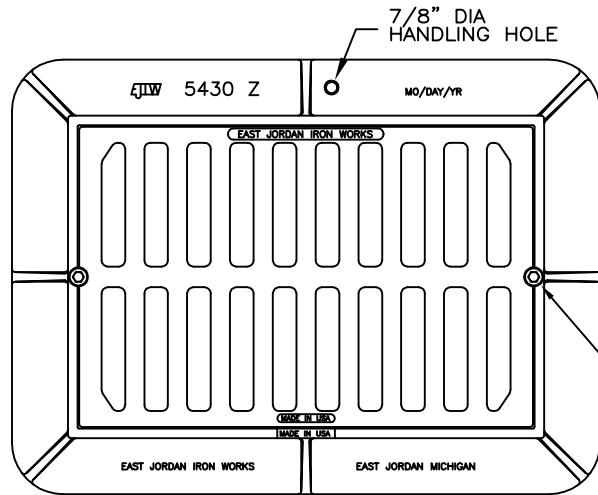
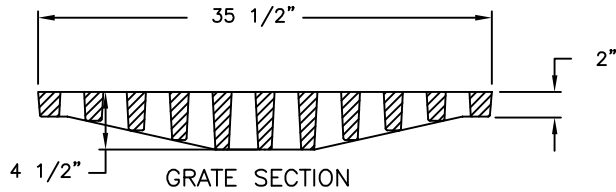


5430Z/5430M BOLTED ASSEMBLY

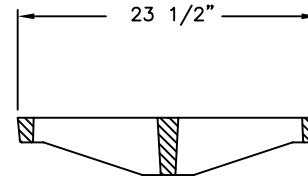


COUNTERBORE & BOLT
DETAIL

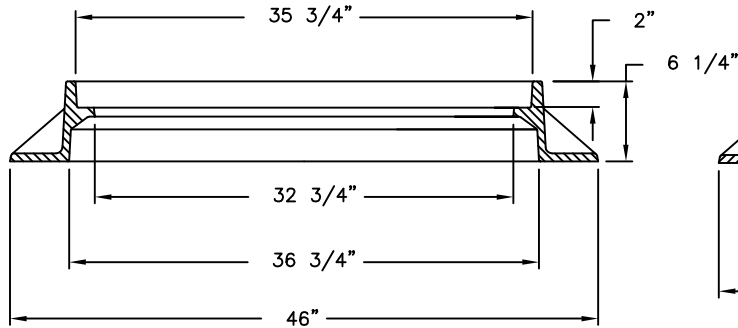
(2) 1/2"-13 x 2 1/4"
HEX HD BOLTS & WASHERS



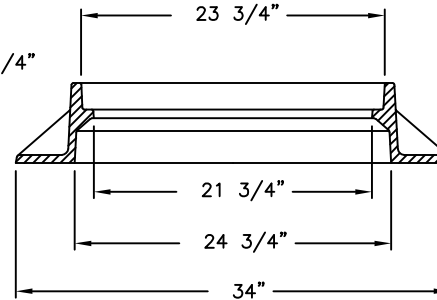
GRATE SECTION



GRATE SECTION



FRAME SECTION



FRAME SECTION

PRODUCT NUMBER

00543001

DESIGN FEATURES

MATERIALS

GRATE-GRAY IRON
ASTM A48 CL35B

FRAME-GRAY IRON
ASTM A48 CL35B

DESIGN LOAD

EXTRA HEAVY DUTY
(PROOF LOAD TESTED
TO 200,000 LBS)

COATING

UNDIPPED

OPEN AREA

355 SQ. IN.

√ DESIGNATES MACHINED
SURFACE

REFERENCE INFORMATION

00543011

00543031

DRAWING DETAILS

ORIGINAL DRAWING: DEW 01/20/06

REVISED BY: SBB 07/14/11

Corporate
Headquarters
301 Spring Street
PO Box 439
East Jordan, MI
49727-0439
800.874.4100



Call Today for
More Information

800.626.4653

EJIW EAST JORDAN
IRON WORKS EST 1883
WE COVER YOUR INFRASTRUCTURE

www.ejiw.com
MADE IN THE USA

- Weights (lbs./kg.), dimensions (inches/mm.), and drawings provided for your guidance.
- We reserve the right to modify specifications without prior notice.
- Uncontrolled distribution.

CONFIDENTIAL: This drawing is the property of East Jordan Iron works, Inc., and embodies confidential information, registered marks, trade secret information, and/or know how that is the property of East Jordan Iron Works, Inc. ©Copyright 2009 East Jordan Iron Works, Inc.