

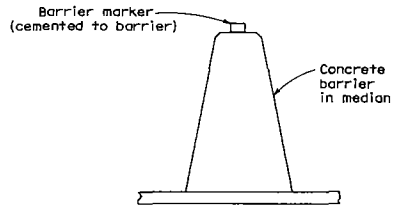
DIST	COUNTY	ROUTE	POST MILES TOTAL PROJECT	SHEET NO.	TOTAL SHEETS

*Randell D. Hiatt*  
REGISTERED CIVIL ENGINEER

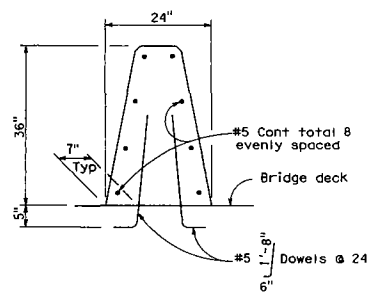
May 1, 2006  
PLANS APPROVAL DATE

The State of California or its officers or agents shall not be responsible for the accuracy or completeness or electronic copies of this plan sheet.

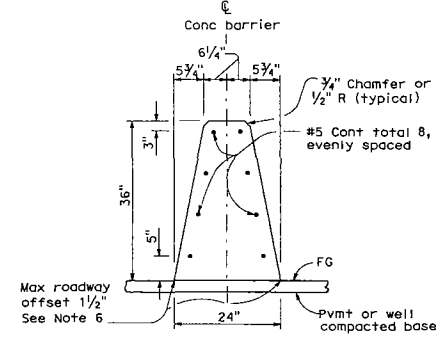
To get to the Caltrans web site, go to: <http://www.dtd.ca.gov>



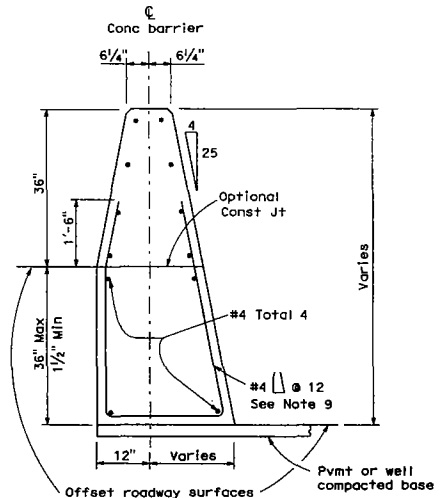
**CONCRETE BARRIER TYPE 60 DELINEATION**  
See Notes 7 and 8



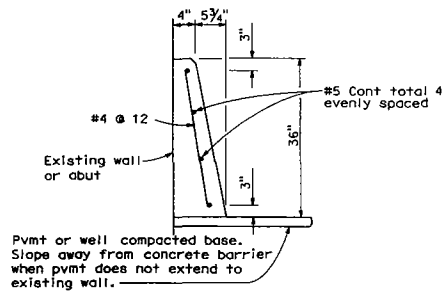
**CONCRETE BARRIER TYPE 60A**  
Details similar to Type 60 except as noted.



**CONCRETE BARRIER TYPE 60**



**CONCRETE BARRIER TYPE 60C**  
Details similar to Type 60 except as noted. Concrete barrier end anchor when necessary.



**CONCRETE BARRIER TYPE 60D**

**NOTES:**

- See Standard Plan A76B for details of Concrete Barrier Type 60 end anchors, connection to structures and transitions to Concrete Barrier Type 50 and Concrete Barrier Type 60S.
- See Standard Plan A76C for Concrete Barrier Type 60 transitions at bridge column and sign pedestals.
- Where glare screen is required on Concrete Barrier Type 60, use Concrete Barrier Type 60G.
- Where the concrete barrier is added to the face of existing concrete structure, match existing weep holes.
- Expansion joints in concrete barrier shall be located at all deck, pavement and principal wall joints. Expansion joint filler material shall be the same size as joint or 1/2" minimum.
- Where roadway offset is greater than 1 1/2", see Concrete Barrier Type 60C.
- Barrier delineation to be used when required by the Special Provisions.
- Spacing of barrier markers to match spacing of raised pavement markers on the adjacent median edge line pavement delineation.
- Reinforcing stirrup not required for roadway offsets less than 1'-0".

STATE OF CALIFORNIA  
DEPARTMENT OF TRANSPORTATION  
**CONCRETE BARRIER TYPE 60**

NO SCALE