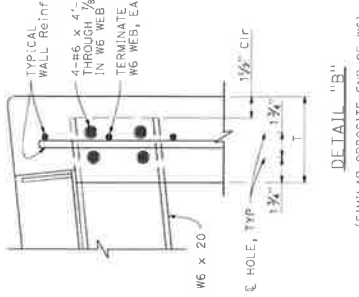
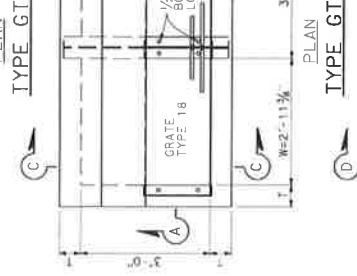
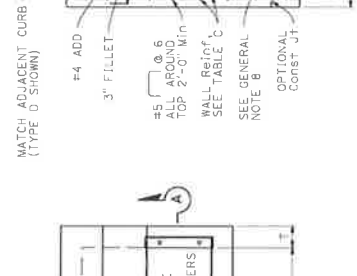
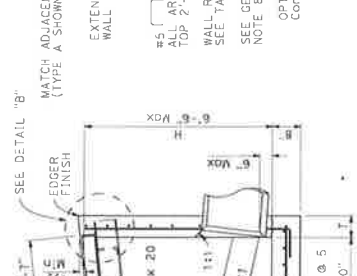
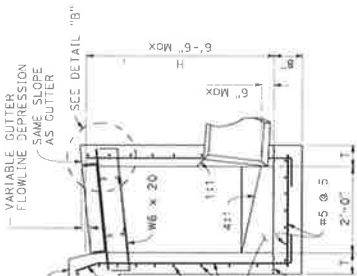
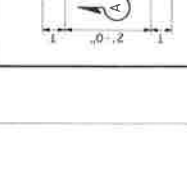
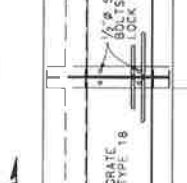
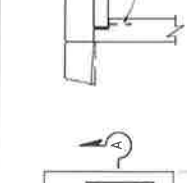
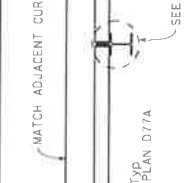
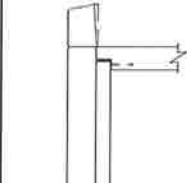
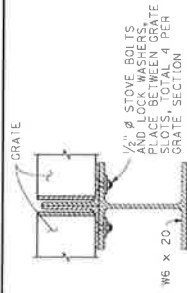


PROJECT COUNTY ROAD/ HIGHWAY DISTRICT SHEET NO. SHEETS

REGISTERED CIVIL ENGINEER
 May 31, 2018
 STATE OF CALIFORNIA
 CIVIL ENGINEER
 No. 52524

DESIGNED BY: [Signature]
 CHECKED BY: [Signature]
 DATE: [Signature]

IN THE CITY OF CALIFORNIA, THE STATE OF CALIFORNIA HAS REVIEWED THE PROJECT AND HAS FOUND IT TO BE IN ACCORDANCE WITH THE REQUIREMENTS OF THE ENGINEERING PROFESSIONAL ACT.



- NOTES:**
- See Standard Plan D72 for General Notes and additional details. See Standard Plan D720 for tables, wall thickness, and quantities.
 - W=2'-11 1/2" for one grate. Add 3"-5 1/2" for additional grates in random.
 - Complete joint penetration butt welds may be substituted for the fillet welds on all anchors.
 - Standard square, hexagon, round or equivalent headed anchors may be substituted for the right angle hooks on the anchors shown on this plan.

STATE OF CALIFORNIA
 DEPARTMENT OF TRANSPORTATION

**CIP DRAINAGE INLETS
 TYPES GT1, GT2,
 GT3 AND GT4**

NO SCALE

D72D