

1" [25mm] RAISED
LETTERS (RECESSED FLUSH)
FLAT FACE GOTHIC NO. 2

1 1/2" [38mm] RAISED LETTERS
(RECESSED FLUSH)
FLAT FACE GOTHIC NO. 2

EAST JORDAN
IRON WORKS, INC.
P.O. BOX 439
EAST JORDAN, MI. 49727
1-800-874-4100
FAX 231-536-4458

DRAWN
SBB

DATE
10/20/03

APPROVED

DATE

MANHOLE
ASSEMBLY

PRODUCT NO.

00316207

CATALOG NO.

3162C
3162Z

REF. PRODUCT DRAWING

00316252
00316210

EST. WT.

COVER: 175 LBS 80kg
FRAME: 265 LBS 120kg
UNIT: 440 LBS 200kg

OPEN AREA

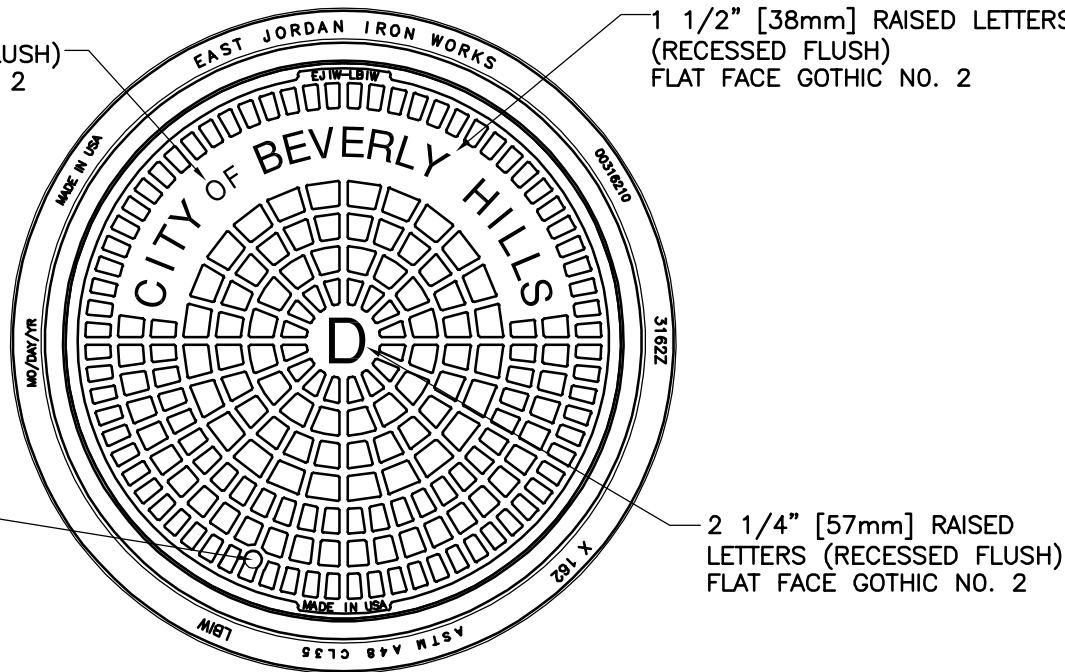
N/A

MAT'L SPEC.

COVER - GRAY IRON
ASTM A48 CL35
FRAME - GRAY IRON
ASTM A48 CL35

LOAD RATING

HEAVY DUTY



3/4" [19mm] DIA
HANDLING HOLE

2 1/4" [57mm] RAISED
LETTERS (RECESSED FLUSH)
FLAT FACE GOTHIC NO. 2

