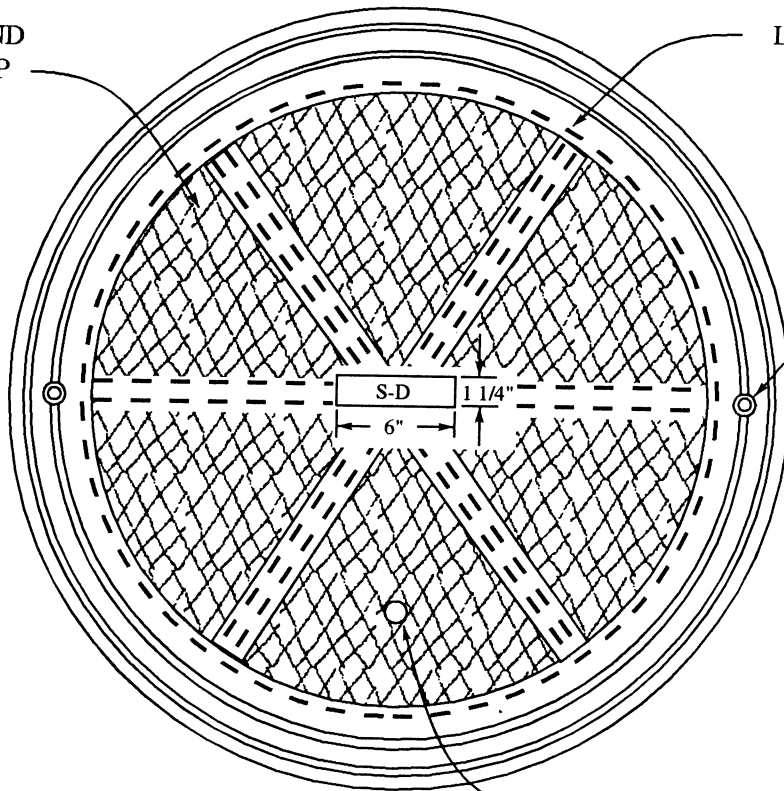


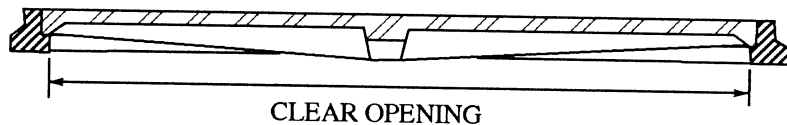
2 X 1 DIAMOND  
MAT 1/8" DEEP

LIFTING SLOT



LOCKING DEVICES  
(PARKWAY ONLY)  
TWO 3/4" SOCKET  
ALLEN HEADD  
STAINLESS STEEL  
SET SCREWS

PICK HOLE  
3/4" DIA.



CLEAR OPENING

NOTES:

1. FOR 22" PARKWAY MANHOLE OPENING USE ALHAMBRA FOUNDRY A-1531 (GALVANIZED) OR APPROVED EQUAL WITH LOCKING DEVICE. APPROXIMATE SHIPPING WEIGHT = 130 LBS.
2. FOR 36" PARKWAY MANHOLE OPENING USE ALHAMBRA FOUNDRY A-1261-4 (GALVANIZED) OR APPROVED EQUAL WITH LOCKING DEVICE. APPROXIMATE SHIPPING WEIGHT = 575 LBS.
3. FOR 24" TRAFFIC MANHOLE OPENING USE ALHAMBRA FOUNDRY 1-1254 OR APPROVED EQUAL. APPROXIMATE SHIPPING WEIGHT = 315 LBS.
4. FOR TRAFFIC MANHOLE OPENING USE ALHAMBRA FOUNDRY A-1251-4 OR APPROVED EQUAL. APPROXIMATE SHIPPING WEIGHT = 575 LBS.



CITY OF MISSION VIEJO

REVISIONS

MANHOLE FRAME AND COVER

STANDARD  
PLAN NO.

424

*Robert Anderson* March 1, 1994  
 APPROVED RCE 30190 DATE

SHT 1 OF 1