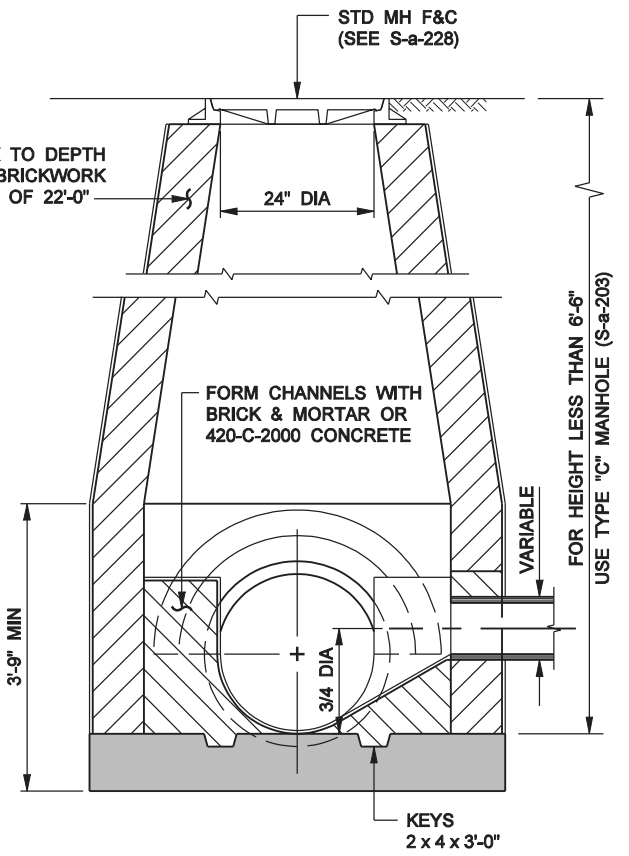
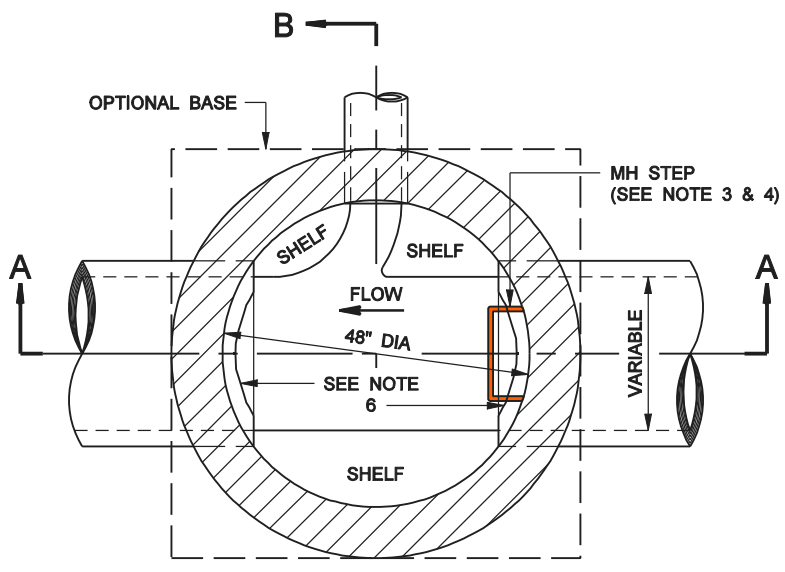


**SECTION A-A**



**SECTION B-B**



**PLAN SECTION C-C**

**NOTES:**

1. FOR 15" SEWERS AND LARGER, TURN 8" ARCH OVER PIPE.
2. FOR 12" SEWERS AND SMALLER, TURN 4" ARCH OVER PIPE.
3. THE LOWEST MANHOLE STEP SHALL BE PLACED NOT LESS THAN 8" NOR MORE THAN 24" ABOVE SHELF.
4. THE UPPER MANHOLE STEP SHALL BE PLACED BETWEEN THE TOP OF MANHOLE AND MANHOLE COVER FRAME AND SHALL PROJECT NOT MORE THAN 4" INSIDE MANHOLE. ALL OTHERS SHALL PROJECT 5".
5. FOR LAYING BRICK OR PLASTERING, THE MORTAR SHALL CONFORM WITH SECTION 201-5.1 (CLASS "D") OF THE STANDARD SPECIFICATIONS.
6. FOR 30" PIPE AND LARGER, THE TOP PORTION OF THE PIPES WITHIN THE MANHOLE SHALL BE CUT OUT TO PROVIDE A CIRCULAR OPENING BETWEEN THE PIPE ENDS OF NOT LESS THAN 42". THE CUT EDGES SHALL BE PLASTERED SMOOTH WITH CEMENT MORTAR FOR CONCRETE PIPE AND EPOXY FOR CLAY PIPE. THE CIRCULAR OPENING SHALL BE CUT PRIOR TO INSTALLATION OF THE RISER SECTIONS.

**FOR 8" TO 30" PIPE**

COUNTY SANITATION DISTRICTS OF LOS ANGELES COUNTY  
OFFICE OF CHIEF ENGINEER

STEPHEN R. MAGUIN  
CHIEF ENGINEER

**STANDARD MANHOLE, TYPE "A"**

STANDARD DRAWING  
2006 EDITION  
**S - a - 201**  
SHEET 1 OF 1