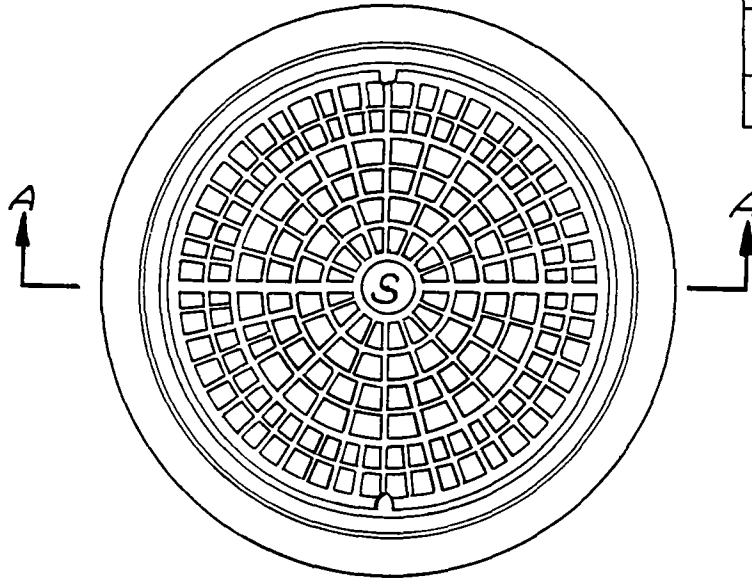
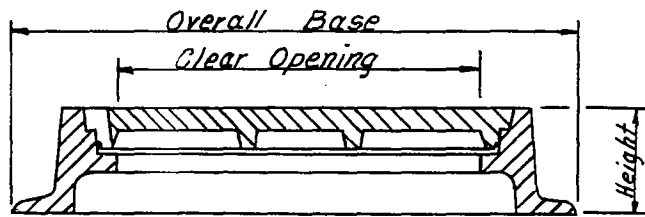


**MANHOLE COVER & FRAME
REQUIRED DIMENSIONS**

CLEAR OPENING	OVERALL BASE	HEIGHT	APPROXIMATE WEIGHT
22 1/2"	33 1/2"	6"	460



TOP VIEW



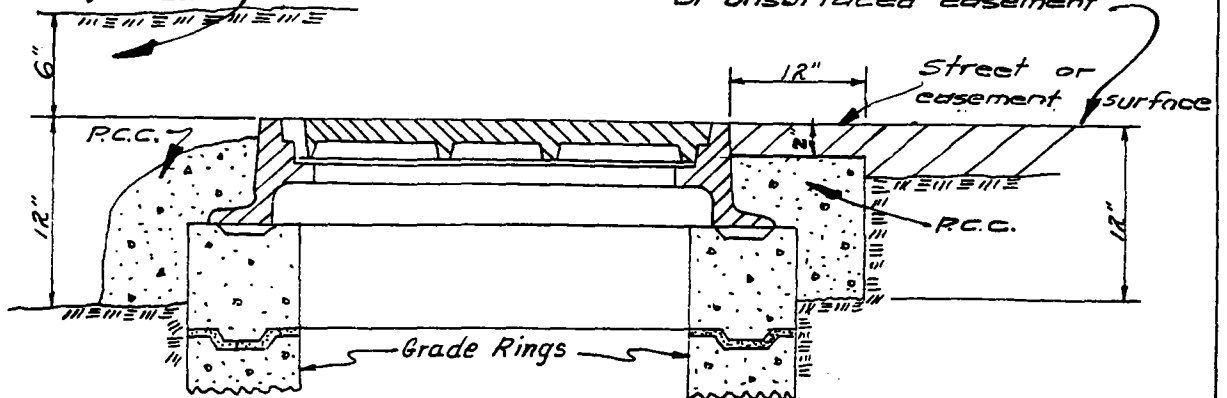
SECTION A-A

NOTES

1. Manhole cover shall be designed for A.A.S.H.O. H-20 loading.
2. Cast iron shall have minimum tensile strength of 30,000 lbs per square inch.

Manholes shall be constructed 6" below finished grade when street isn't paved

Manholes shall be constructed to grade when in paved street or unsurfaced easement



DIRT STREET

PAVED STREET OR EASEMENT

SECTION THRU FRAME SHOWING TYPICAL INSTALLATION

CITY OF SAN BERNARDINO - PUBLIC WORKS DEPT.

STANDARD DRAWING
MANHOLE COVER AND FRAME

APPROVED :

August 29, 1967

S. J. Vickers
CITY ENGINEER

STANDARD

NO.

304