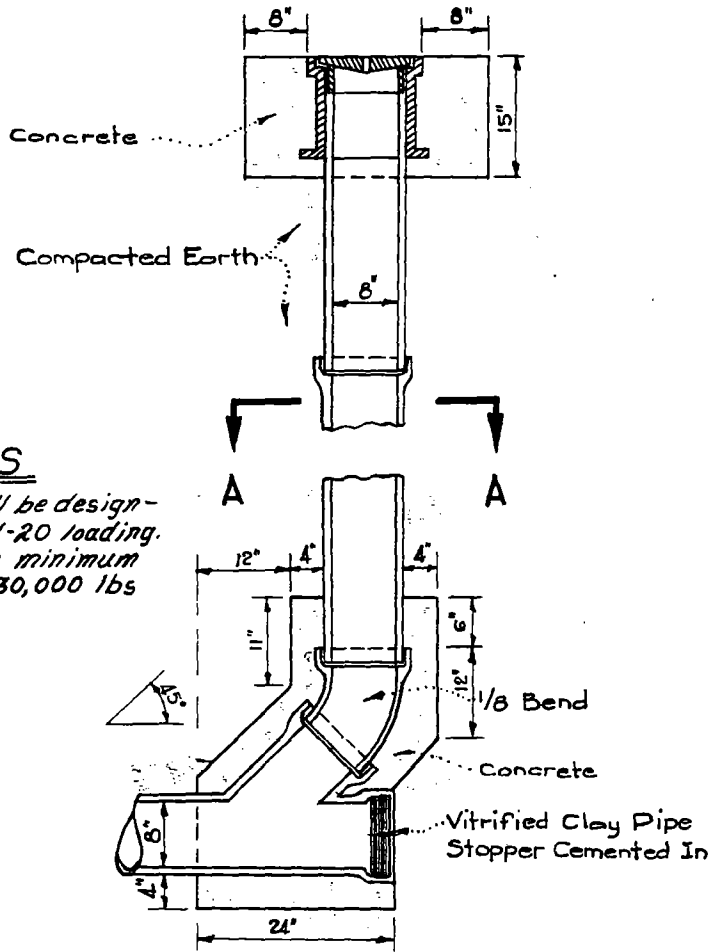


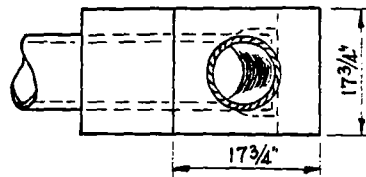
# CLEANOUT FRAME AND COVER

CLEAR OPENING	OVERALL BASE	HEIGHT FRAME	APPROXIMATE WEIGHT
10"	15"	12"	110



- NOTES**
1. Manhole cover shall be designed for A.A.S.H.O. H-20 loading.
  2. Cast iron shall have minimum tensile strength of 30,000 lbs per square inch.

SECTIONAL ELEVATION



SECTION A-A

REV. 3	Revised Standard No.	8/22/78 <i>6101</i>
REV. 2	Removed Note of Frame & Cover & Added Two Notes & Table	8/31/67 <i>SDH</i>
REV. 1	Rev. Conc. to Agree With Spec.	7/23/65 <i>7.2.14</i>

CITY OF SAN BERNARDINO - PUBLIC WORKS DEPT.

**STANDARD  
CLEANOUT**

APPROVED:  
 July 22 19 55  
*[Signature]*  
 CITY ENGINEER

STANDARD  
 No.  
 303