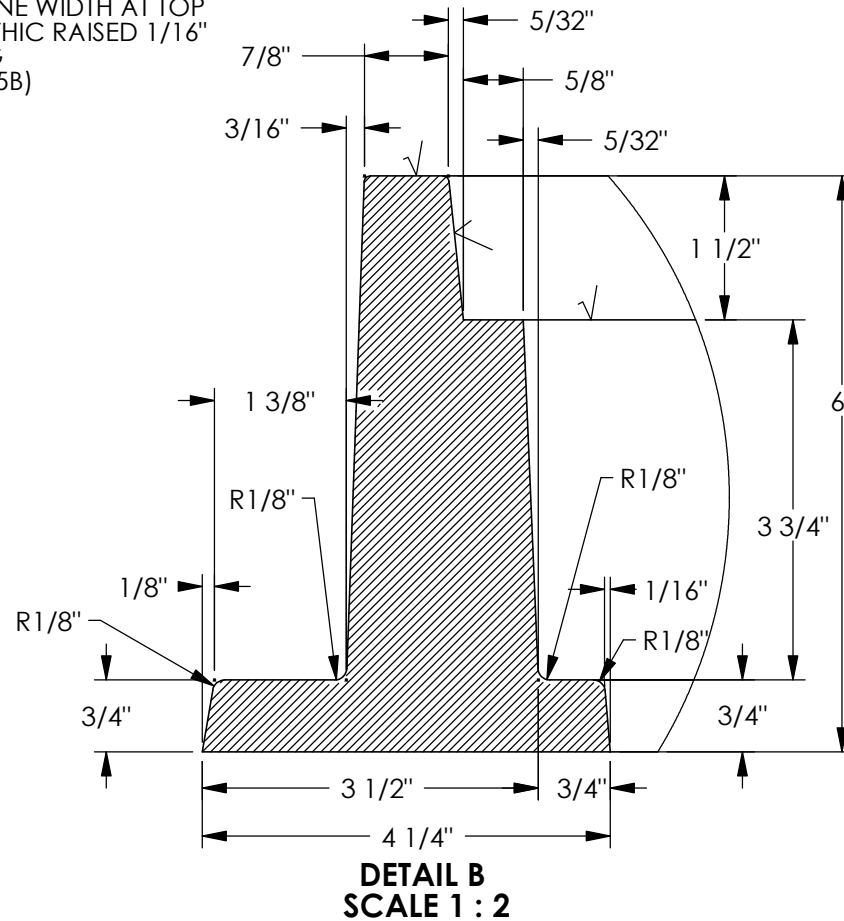
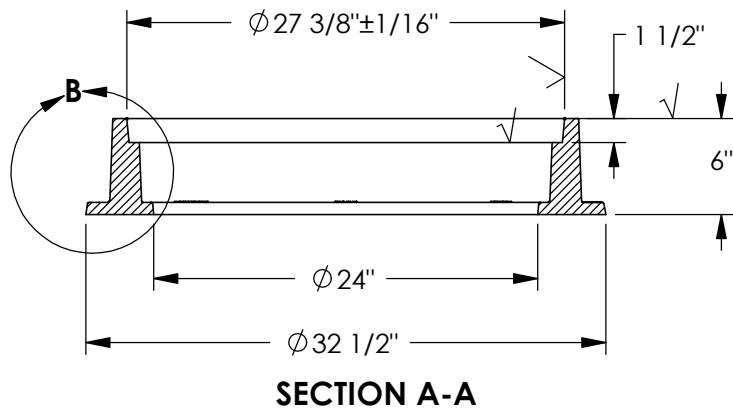
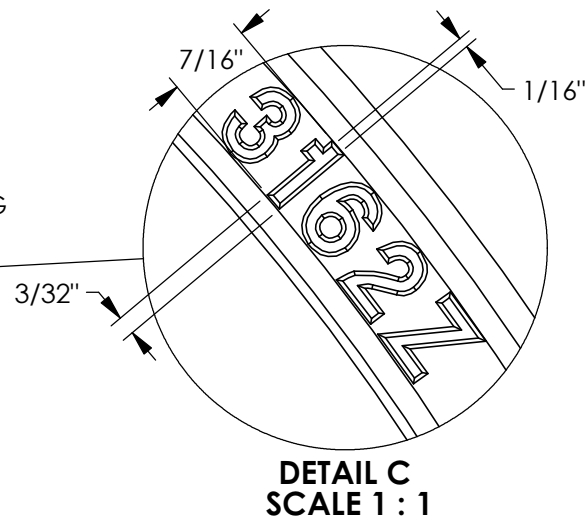
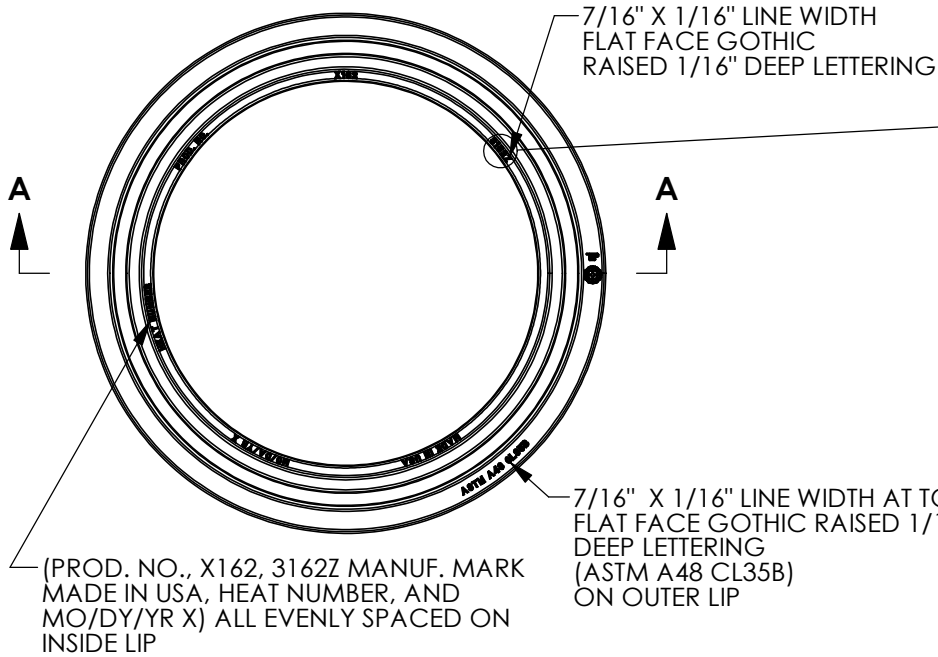


3162Z Frame



Product Number

00316211

Design Features

- Materials
Gray Iron (CL35B)
- Design Load
Heavy Duty
Proof Load Tested to 53,200 LBS.
- Open Area
n/a
- Coating
Asphaltic Coated
- √ Designates Machined Surface

Weight

MIN. 250 LBS.
MAX. 275 LBS.

Certification

- ASTM A48
-
- Country of Origin: USA

Manufacturing Facility

ARDMORE, OK., USA

Fabrication Inspection
Required.

Drawing Revision

1/5/2015 Designer: DAE
Revised By:

Contact

800 626 4653
ejco.com