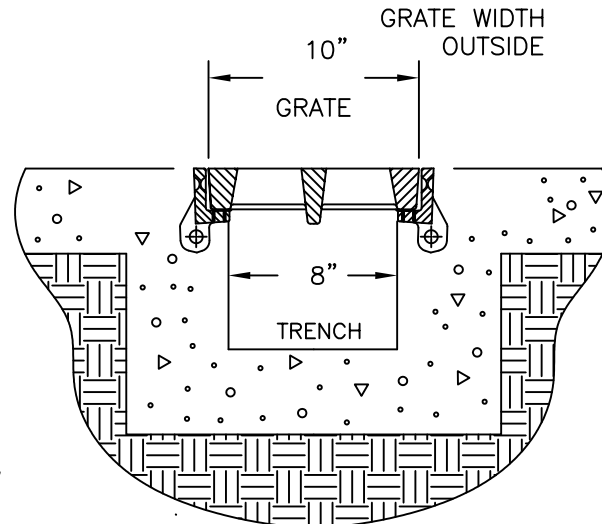
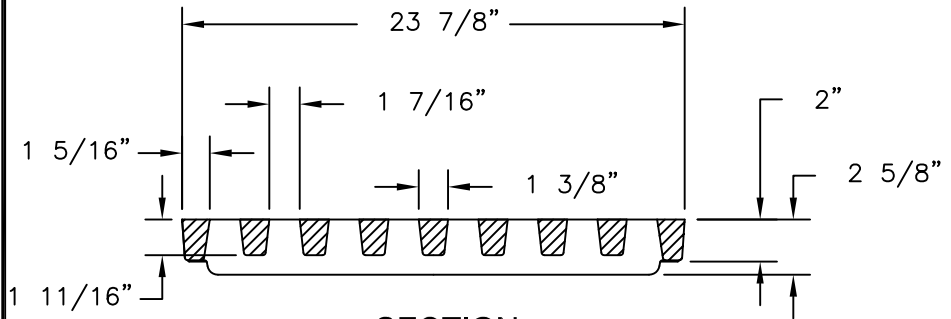


(4) 1/2"- 13 X 2" HEX
HD S.S. CAP SCREWS W/SS
LOCK AND PLAIN WASHERS

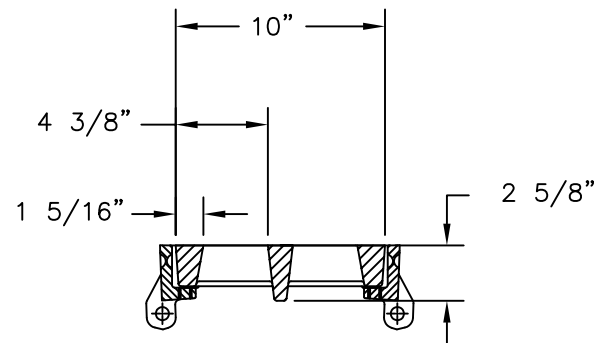
CAUTION: DO NOT DISASSEMBLE BOLTED
GRATES AND CHECK FRAME WIDTH INSIDE
BEFORE SETTING SECTIONS IN CONCRETE.



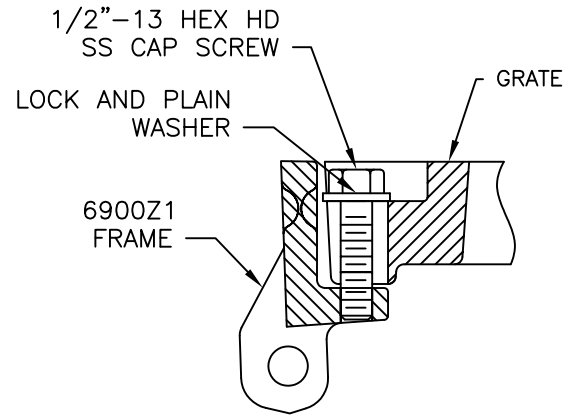
SECTION



SECTION



SECTION



BOLT DETAIL

EJIW EAST JORDAN
IRON WORKS EST.1883

800-626-4653
www.ejiw.com
MADE IN USA

PRODUCT NUMBER
00690201

CATALOG NUMBER
6902M2DI
6900Z1

**TRENCH FRAME
ASSEMBLY**

LOAD RATING
EXTRA HEAVY DUTY
(PROOF LOAD TESTED
TO 200,000 LBS.)

COATING
UNDIPPED

MATERIAL SPECIFICATION
GRATE- DUCTILE IRON
ASTM A536
FRAME- GRAY IRON
ASTM A48 CL35B

OPEN AREA
34 SQ. IN./FT.

√ DESIGNATES MACHINED
SURFACE

DRAWN TCL	DATE 08/19/04
LAST REVISED SMM	DATE 02/02/11

REFERENCE INFORMATION

00690023
00690244

CONFIDENTIAL: This drawing is the property of East Jordan Iron Works, Inc. and embodies confidential information, trade secret information, and/or know how that is the property of East Jordan Iron Works, Inc. © Copyright 2007 East Jordan Iron Works, Inc.